

Palma

# Luxury penthouse apartments with exceptional offer in Nou Levant

Número da propriedade: *ES21379103\_6.H*



PREÇO DE COMPRA: 3.360.000 EUR • ÁREA: ca. 133 m<sup>2</sup> • QUARTOS: 4

Número da propriedade: ES21379103\_6.H - 07007 Palma

- Numa vista geral
- O imóvel
- Dados energéticos
- Plantas dos pisos
- Uma primeira impressão
- Detalhes do equipamento
- Pessoa de contacto

Número da propriedade: ES21379103\_6.H - 07007 Palma

## Numa vista geral

Número da propriedade	ES21379103_6.H	Preço de compra	3.360.000 EUR
Área	ca. 133 m <sup>2</sup>	Apartamento	
Disponibilidade	consoante marcação de visita	Tipo de construção	Sólido
Piso	6	Área útil	ca. 385 m <sup>2</sup>
Quartos	4	Móveis	Terraço, WC de hóspedes, Piscina, Jardim / uso partilhado, Cozinha embutida
Quartos	3		
Casas de banho	3		
Ano de construção	2022		
Tipo de estacionamento	1 x Parque de estacionamento subterrâneo		

Número da propriedade: ES21379103\_6.H - 07007 Palma

## Dados energéticos

Sistemas de aquecimento	Aquecimento por chão radiante
Aquecimento	Bomba de calor ar-água

Número da propriedade: ES21379103\_6.H - 07007 Palma

## O imóvel





Número da propriedade: ES21379103\_6.H - 07007 Palma

## O imóvel



Número da propriedade: ES21379103\_6.H - 07007 Palma

## O imóvel



Número da propriedade: ES21379103\_6.H - 07007 Palma

## O imóvel





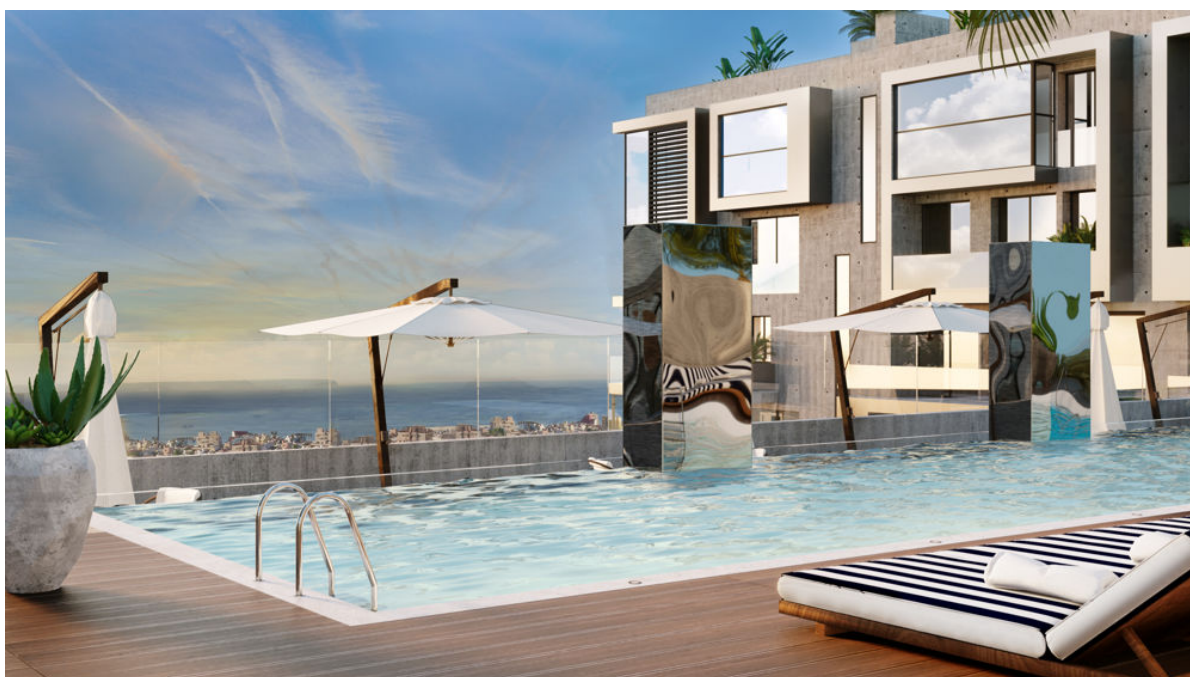
Número da propriedade: ES21379103\_6.H - 07007 Palma

## O imóvel



Número da propriedade: ES21379103\_6.H - 07007 Palma

## O imóvel





Número da propriedade: ES21379103\_6.H - 07007 Palma

## O imóvel



Número da propriedade: ES21379103\_6.H - 07007 Palma

## O imóvel





Número da propriedade: ES21379103\_6.H - 07007 Palma

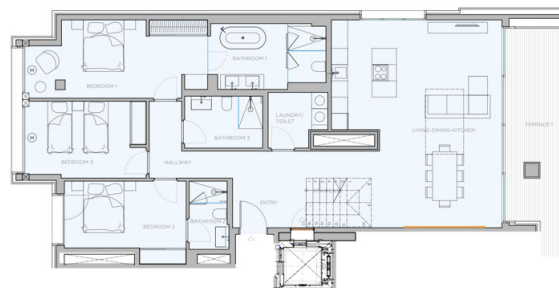
## O imóvel





Número da propriedade: ES21379103\_6.H - 07007 Palma

# Plantas dos pisos



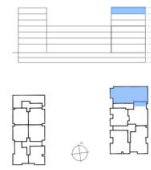
- ✓ KITCHEN
- ✓ WARDROBES
- ✓ SMART CONTROL
- ✓ PANORAMA WINDOWS
- ✓ SOLAR CONTROL GLASS
- ✓ COMMUNITY POOL
- ✓ COMMUNITY GYM
- ✓ SECURITY SYSTEM
- ✓ ART WALL
- ✓ BLINDS
- ✓ AIRCINGING
- REINFORCED WINDOW

**XO1** **CONSTRUTORA**

0m 1m 2m 3m 4m

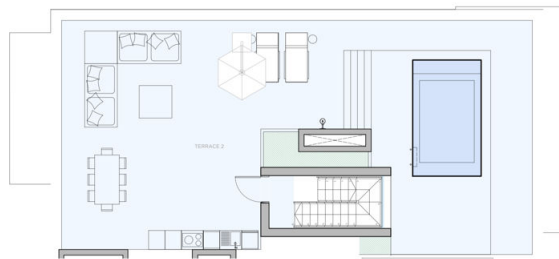
This document is a preliminary plan. It has not been constructed and will be replaced by the final construction plan.

**XO JAY**



APARTAMENTO 6.H	
FLOOR USABLE FLOOR AREA	153.79
FLOOR GROSS FLOOR AREA	156.08
TERRACE 1	16.00
TERRACE 2	15.47
POOL	10.83
GROSS FLOOR AREA	204.56
GFA + COMMON AREAS	261.71
ROOM SURFACE	
ENTRY	10.57
LIVING DINING KITCHEN	44.26
STAIRCASE	4.40
HALLWAY 1	5.28
LAUNDRY	4.15
BEDROOM 1	12.21
BEDROOM 1	9.94
BEDROOM 2	12.21
BEDROOM 2	9.94
BEDROOM 3	12.21
BEDROOM 3	9.94
BATHROOM 1	5.61
BATHROOM 2	5.61
BATHROOM 3	5.61
POOL	
LANDING	2.10
TOTAL USABLE FLOOR AREA	153.79

APARTMENT **6.H**



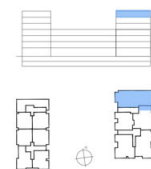
- ✓ KITCHEN
- ✓ WARDROBES
- ✓ SMART CONTROL
- ✓ PANORAMA WINDOWS
- ✓ SOLAR CONTROL GLASS
- ✓ COMMUNITY POOL
- ✓ COMMUNITY GYM
- ✓ SECURITY SYSTEM
- ✓ ART WALL
- ✓ BLINDS
- ✓ AIRCINGING
- REINFORCED WINDOW

**XO1** **CONSTRUTORA**

0m 1m 2m 3m 4m

This document is a preliminary plan. It has not been constructed and will be replaced by the final construction plan.

**XO JAY**



APARTAMENTO 6.H	
FLOOR USABLE FLOOR AREA	153.79
FLOOR GROSS FLOOR AREA	156.08
TERRACE 1	16.00
TERRACE 2	15.47
POOL	10.83
GROSS FLOOR AREA	204.56
GFA + COMMON AREAS	261.71
ROOM SURFACE	
ENTRY	10.57
LIVING DINING KITCHEN	44.26
STAIRCASE	4.40
HALLWAY 1	5.28
LAUNDRY	4.15
BEDROOM 1	12.21
BEDROOM 1	9.94
BEDROOM 2	12.21
BEDROOM 2	9.94
BEDROOM 3	12.21
BEDROOM 3	9.94
BATHROOM 1	5.61
BATHROOM 2	5.61
BATHROOM 3	5.61
POOL	
LANDING	2.10
TOTAL USABLE FLOOR AREA	153.79

APARTMENT **6.H.R**

Esta planta não é à escala. Os documentos foram-nos entregues pelo cliente. Por conseguinte, não podemos assumir qualquer responsabilidade pela exatidão das indicações.

Número da propriedade: ES21379103\_6.H - 07007 Palma

## Uma primeira impressão

If you are looking for something special and luxurious in the immediate vicinity of the sea in a fantastic Mediterranean city, you will find it. Luxury apartments with an exceptional offer are for sale. The complex with a total of 84 apartments is located in the up-and-coming location Nou Levant. The layout and layout of the apartments maximise natural light through floor-to-ceiling glass walls that open onto elegant private balconies, providing residents with an outdoor living area to enjoy Palma's mild climate. The striking indoor-outdoor concept creates open plan living spaces with panoramic electric windows and integrated outdoor living areas, along with beautiful roof terraces and gardens. There are three lines to choose from, creating unique properties with an individual feel, using the highest quality materials. The modern, individually designed and fully equipped kitchens with high quality Miele brand electrical appliances are not only for dining, but also for family life and entertaining. Bathrooms feature built-in or freestanding baths and advanced appliances and fixtures. They meet the highest standards and offer a blend of practicality and impeccable style. The penthouses have a spectacular private roof terrace with pool or Jacuzzi and barbecue area with ground planting, designed for privacy and overlooking charming Portixol. The communal outdoor deck offers a place to lounge or swim in an exceptional pool. There are also elegant sun loungers available. A place to relax and unwind is available. With the finest private amenities available exclusively to residents, surrounding an inviting multi-level garden lounge with palm trees, vegetation, overhead lights and fire pits. A true urban oasis. Equipped with sauna and steam room, showers and changing rooms. The fitness area is equipped with state-of-the-art fitness equipment. The XO Lounge offers spaces to live, work and enjoy. The common areas have been carefully designed with comfort and convenience in mind to meet the leisure and business needs of residents in a relaxed atmosphere, complemented by excellent facilities and services. A virtual tour is available for this property.

Número da propriedade: ES21379103\_6.H - 07007 Palma

## Detalhes do equipamento

- Ceramic tiles GUBI cloud 120x120cm
- Underfloor heating
- Shadow joints (skirting boards)
- Suspended ceiling
- Interior doors: 1-leaf frameless passage door - Inverse Portaro
- intercom system
- Electrical installation
- Electric blinds
- Power sockets/ USB connections
- Intercom system
- Swimming Pool
- Double glazed windows
- Fitted kitchen
- Terrace with
- Municipal water supply
- Municipal electricity supply

Número da propriedade: ES21379103\_6.H - 07007 Palma

## Pessoa de contacto

Para mais informações, queira contactar a sua pessoa de contacto:

Philip Bornewasser

---

Ronda Migjorn, 145B Maiorca - Lluçmajor

E-Mail: [llucmajor@von-poll.com](mailto:llucmajor@von-poll.com)

*To Disclaimer of von Poll Immobilien GmbH*

---

[www.von-poll.com](http://www.von-poll.com)