

Palma – Palma

## Beautiful new build penthouse with roof terrace in Palma near Parc de Sa Riera

Número da propriedade: ES24379020



PREÇO DE COMPRA: 335.000 EUR • ÁREA: ca. 71 m<sup>2</sup> • QUARTOS: 3

Número da propriedade: ES24379020 - 07011 Palma – Palma

- Numa vista geral
- O imóvel
- Dados energéticos
- Plantas dos pisos
- Uma primeira impressão
- Detalhes do equipamento
- Tudo sobre a localização
- Outras informações
- Pessoa de contacto

Número da propriedade: ES24379020 - 07011 Palma – Palma

## Numa vista geral

Número da propriedade	ES24379020
Área	ca. 71 m <sup>2</sup>
Disponibilidade	consoante marcação de visita
Piso	4
Quartos	3
Quartos	2
Casas de banho	2
Ano de construção	2025

Preço de compra	335.000 EUR
Apartamento	
Tipo de construção	Sólido
Área útil	ca. 0 m <sup>2</sup>
Móveis	Terraço, Cozinha embutida

Número da propriedade: ES24379020 - 07011 Palma – Palma

## Dados energéticos

Aquecimento

Elétrico

---

Número da propriedade: ES24379020 - 07011 Palma – Palma

## O imóvel



Número da propriedade: ES24379020 - 07011 Palma – Palma

## O imóvel



Número da propriedade: ES24379020 - 07011 Palma – Palma

## O imóvel



Número da propriedade: ES24379020 - 07011 Palma – Palma

## O imóvel



### CERTIFICADO ENERGÉTICO

Consumo de energia  
kWh / m<sup>2</sup> año

Emisiones  
kg CO<sub>2</sub> / m<sup>2</sup> año

A más eficiente

B

C

D

F

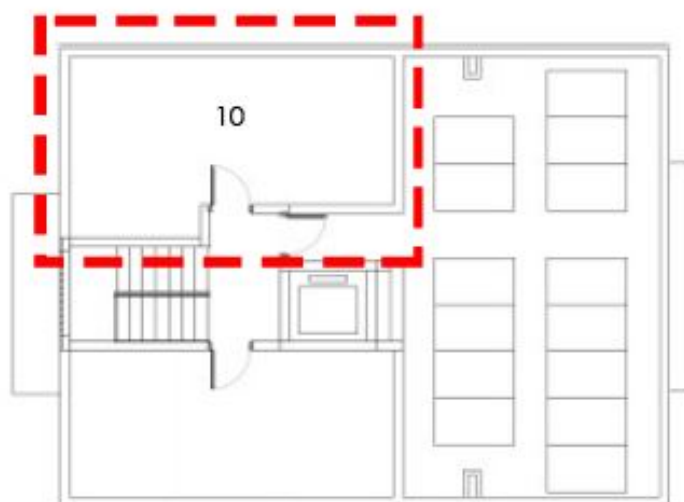
G menos eficiente

EN TRÁMITE



Número da propriedade: ES24379020 - 07011 Palma – Palma

## Plantas dos pisos



### SUPERFICIES ÚTILES

m<sup>2</sup>

10. TERRAZA EN CUBIERTA

21.54

Esta planta não é à escala. Os documentos foram-nos entregues pelo cliente. Por conseguinte, não podemos assumir qualquer responsabilidade pela exatidão das indicações.

Número da propriedade: ES24379020 - 07011 Palma – Palma

## Uma primeira impressão

This newly built penthouse with roof terrace is for sale in Palma, just a few minutes from the large Parc de Sa Riera. The apartment offers a living space of approx. 71 square meters. The kitchen with dining area is a large room that incorporates the living room. There are also two bedrooms and two bathrooms, one of which is en suite. The property impresses with its high-quality solid construction and has a full basement. The flooring consists of stylish tiles that lend a timeless charm. A modern fitted kitchen is already available and allows for a comfortable cooking experience. The kitchen is equipped with an induction hob, an oven and a microwave. A special highlight of this apartment are the two balconies and the 21 square meter roof terrace, which invites you to relax and enjoy the Mediterranean sun. The apartment building will be completed in the first quarter of 2025.

Número da propriedade: ES24379020 - 07011 Palma – Palma

## Detalhes do equipamento

- Double-glazed windows
- Roller shutters
- Fitted kitchen with induction hob, oven and microwave
- Exterior walls with thermal insulation
- Entrance door with security lock
- Kitchen sink with stainless steel and mixer tap
- Bathroom sink with mixer tap
- Hot water with atherothermal system
- Pre-installation of ducted air conditioning
- Installation of photovoltaic system
- Video intercom
- Terrace
- Balcony
- Private roof terrace
- Municipal water supply
- Municipal power supply

Número da propriedade: ES24379020 - 07011 Palma – Palma

## Tudo sobre a localização

Palma, the capital of the island, is also the largest city in Mallorca. It offers a large number of sights and is worth a visit at any time of year. To the east is the port of Portixol, which is not far from the Nou Llevant development area. This is also where the city beach "Platja de Can Pere Antoni" begins, a long sandy beach with a view of the cathedral. This imposing Gothic building with its large rose window and wrought-iron canopy by Gaudí is the city's landmark and tourist magnet. From here, you can walk into the winding old town with its numerous cafés and restaurants. The harbor promenade "Paseo Marítimo", on the other hand, invites you to take a stroll. It is lined with restaurants, boutiques and hotels. To the west of the city is the chic, renovated harbor district of Porto Pi. Here you will find an abundance of waterfront bars and fish restaurants along the promenade, the Palma Casino and the well-known Centro Porto Pi shopping center.

Número da propriedade: ES24379020 - 07011 Palma – Palma

## Outras informações

We generally recommend having the building law situation checked by a specialist lawyer. All details are based exclusively on information provided by the owner or client. We assume no liability for the completeness, accuracy and timeliness of the information. The brokerage fee is payable by the vendor. Any taxes, notary and land registry costs incurred on the purchase are to be borne by the buyer.

Número da propriedade: ES24379020 - 07011 Palma – Palma

## Pessoa de contacto

Para mais informações, queira contactar a sua pessoa de contacto:

Philip Bornewasser

---

Ronda Migjorn, 145B Maiorca - Lluçmajor

E-Mail: [llucmajor@von-poll.com](mailto:llucmajor@von-poll.com)

*To Disclaimer of von Poll Immobilien GmbH*

---

[www.von-poll.com](http://www.von-poll.com)