

Castelmaggiore

Very atmospheric townhouse on the creek

CODICE OGGETTO: IT242941209



www.von-poll.it

PREZZO D'ACQUISTO: 250.000 EUR • SUPERFICIE NETTA: ca. 140 m² • SUPERFICIE DEL TERRENO: 2.000 m²

CODICE OGGETTO: IT242941209 - 56011 Castelmaggiore

- A colpo d'occhio
- La proprietà
- Dati energetici
- Planimetrie
- Una prima impressione
- Tutto sulla posizione
- Partner di contatto

CODICE OGGETTO: IT242941209 - 56011 Castelmaggiore

A colpo d'occhio

CODICE OGGETTO	IT242941209
Superficie netta	ca. 140 m ²
DISPONIBILE DAL	Previo accordo
Camere da letto	2
Bagni	2
Anno di costruzione	1930
Garage/Posto auto	1 x Altro

Prezzo d'acquisto	250.000 EUR
Casa	Casa unifamiliare
Compenso di mediazione	subject to agency commission
Superficie commerciale	ca. 140 m ²
Superficie lorda	ca. 0 m ²

CODICE OGGETTO: IT242941209 - 56011 Castelmaggiore

Dati energetici

Tipologia di
riscaldamento

Sistema di
riscaldamento a un
piano

Classe di efficienza
energetica

G

Fonte di
alimentazione

Gas

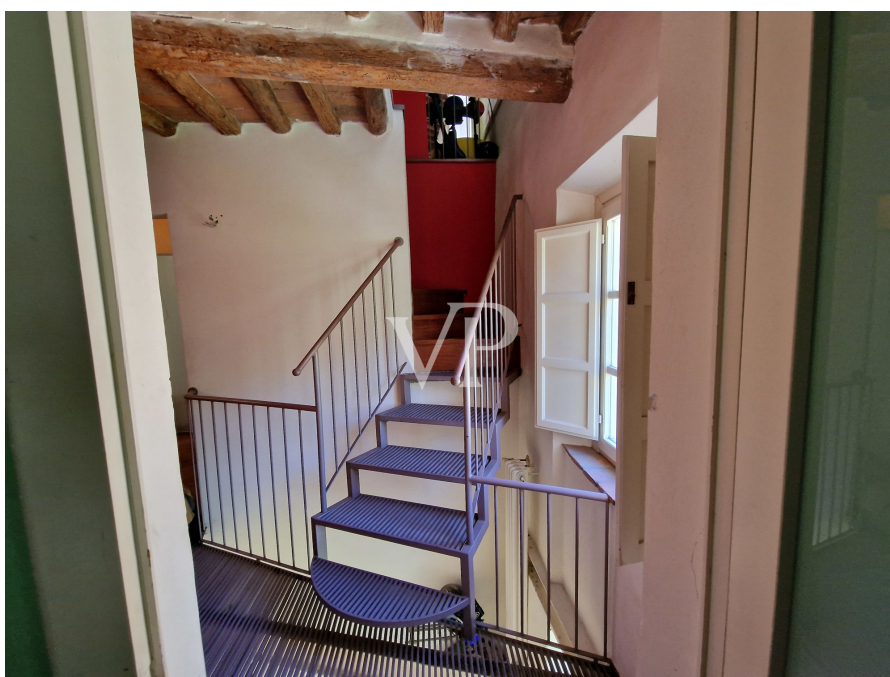
CODICE OGGETTO: IT242941209 - 56011 Castelmaggiore

La proprietà



CODICE OGGETTO: IT242941209 - 56011 Castelmaggiore

La proprietà



CODICE OGGETTO: IT242941209 - 56011 Castelmaggiore

La proprietà



CODICE OGGETTO: IT242941209 - 56011 Castelmaggiore

La proprietà



CODICE OGGETTO: IT242941209 - 56011 Castelmaggiore

La proprietà



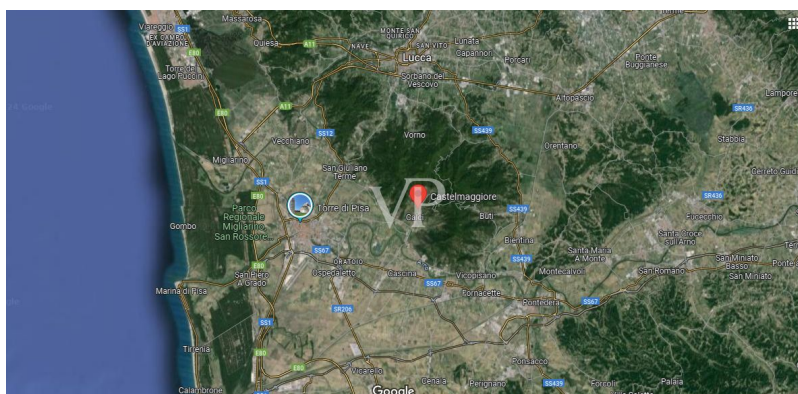
CODICE OGGETTO: IT242941209 - 56011 Castelmaggiore

La proprietà



CODICE OGGETTO: IT242941209 - 56011 Castelmaggiore

Planimetrie







Questa pianta non è in scala. I documenti ci sono stati dati dal cliente. Per questo motivo, non possiamo garantire la precisione delle informazioni.

CODICE OGGETTO: IT242941209 - 56011 Castelmaggiore

Una prima impressione

Arriving at the entrance of the capital Calcesano, from the Pieve Romanica, or from the Certosa di Calci , in the direction of Castel Maggiore, after having traveled up a few kilometers of municipal road, which passes through inhabited villages and olive groves, we reach the building proposed for sale . Lying on the left side of the stream Zambra,shaded by the thick woody vegetation that makes this place alive and magical, we find a typical renovated rooftop with a large terrace, overlooking the watercourse. The building has three levels, in addition to the cellar located in the basement. The ground floor consists of living room , kitchen , and bathroom , the stone staircase leads us to the first floor consisting of two bedrooms a bathroom with Jacuzzi, and large terrace where you can spend relaxing moments, lulled by the rustle of the waters. From a modern iron staircase , which integrates well with the living context characterized by terracotta floors and beamed and rafted ceilings, we access the second floor consisting of a large bright living room with fireplace . Owned parking space and in right of use a portion of land located across the stream easily accessible from the public street.

CODICE OGGETTO: IT242941209 - 56011 Castelmaggiore

Tutto sulla posizione

Calci is a town located in the province of Pisa, Tuscany, Italy, only 16km from Galileo Galilei International Airport, close to the Tyrrhenian coast and major Tuscan art cities such as Lucca , Florence and Siena respectively 24km 80km and 110km away No less important are the proximity of the Migliarino San Rossore Massaciuccoli Natural Park perfect for hiking, biking or horseback riding and Torre del Lago Puccini: famous for being the summer vacation destination of the composer Giacomo Puccini, where every summer on the lake, there are festivals and performances dedicated to his music. The presence of the Certosa ancient monastery built in the 14th century by Carthusian monks from Siena, now a world-famous museum of natural art , shows that this place at the foot of the Pisan mountains ,rich in water, was and still is ideal for living a healthy life , immersed in the beauty of the surrounding nature, while on the hills that protect the town of Calci from the cold winds coming from the north are ancient villages and farmhouses scattered over a wide area, much sought after by investors for the panorama and breathtaking views all the way to the sea, where the climate is typically Mediterranean, characterized by hot, dry summers and mild, wet winters.

CODICE OGGETTO: IT242941209 - 56011 Castelmaggiore

Partner di contatto

Per ulteriori informazioni, si prega di contattare la persona di riferimento:

Christian Weissensteiner

Corso Italia 1 Milano
E-Mail: milano@von-poll.com

To Disclaimer of von Poll Immobilien GmbH

www.von-poll.com