

Palma

# Luxury penthouse apartments with exceptional offer in Nou Levant

*CODICE OGGETTO: ES21379103\_6.H*



**PREZZO D'ACQUISTO: 3.360.000 EUR • SUPERFICIE NETTA: ca. 133 m<sup>2</sup> • VANI: 4**

CODICE OGGETTO: ES21379103\_6.H - 07007 Palma

- A colpo d'occhio
- La proprietà
- Dati energetici
- Planimetrie
- Una prima impressione
- Dettagli dei servizi
- Partner di contatto

CODICE OGGETTO: ES21379103\_6.H - 07007 Palma

## A colpo d'occhio

CODICE OGGETTO	ES21379103_6.H
Superficie netta	ca. 133 m <sup>2</sup>
DISPONIBILE DAL	Previo accordo
Piano	6
Vani	4
Camere da letto	3
Bagni	3
Anno di costruzione	2022
Garage/Posto auto	1 x Parcheggio interrato

Prezzo d'acquisto	3.360.000 EUR
Appartamento	Attico
Tipologia costruttiva	massiccio
Superficie lorda	ca. 385 m <sup>2</sup>
Caratteristiche	Terrazza, Bagni di servizio, Piscina, Giardino / uso comune, Cucina componibile

CODICE OGGETTO: ES21379103\_6.H - 07007 Palma

## Dati energetici

Tipologia di riscaldamento	a pavimento
Fonte di alimentazione	Pompa di calore idraulica/pneumatica

CODICE OGGETTO: ES21379103\_6.H - 07007 Palma

## La proprietà



CODICE OGGETTO: ES21379103\_6.H - 07007 Palma

## La proprietà





CODICE OGGETTO: ES21379103\_6.H - 07007 Palma

## La proprietà



CODICE OGGETTO: ES21379103\_6.H - 07007 Palma

## La proprietà





CODICE OGGETTO: ES21379103\_6.H - 07007 Palma

## La proprietà



CODICE OGGETTO: ES21379103\_6.H - 07007 Palma

## La proprietà





CODICE OGGETTO: ES21379103\_6.H - 07007 Palma

## La proprietà



CODICE OGGETTO: ES21379103\_6.H - 07007 Palma

## La proprietà





CODICE OGGETTO: ES21379103\_6.H - 07007 Palma

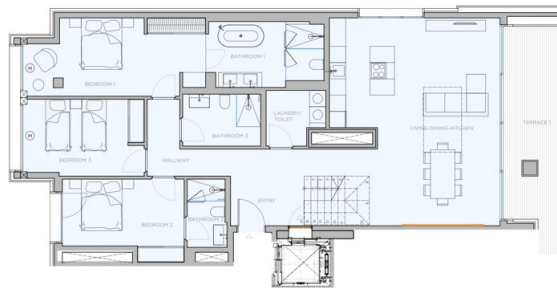
## La proprietà





CODICE OGGETTO: ES21379103\_6.H - 07007 Palma

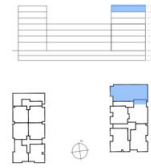
# Planimetrie



- WITKIN
- WARDROBES
- SMART CONTROL
- PANORAMA WINDOWS
- SOLAR CONTROL GLASS
- COMPARTMENT POOL
- COMPARTMENT FIRE
- SECURITY SYSTEM
- ART WALL
- BLINDS
- ACHEATING
- REFORCED WINDOW

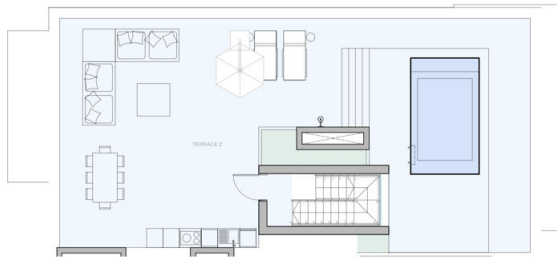
**XO1** **WAVE**  
0m 1m 2m 3m 4m  
This document is a preliminary plan and not a construction plan. All the dimensions and areas are approximate values.

**XO JAY**



APARTMENT 6.H	
FLOOR USABLE FLOOR AREA	153.79
FLOOR GROSS FLOOR AREA	156.08
TERRACE 1	16.00
TERRACE 2	15.47
POOL	10.83
GROSS FLOOR AREA	201.54
GFA + COMMON AREAS	201.71
ROOM SURFACE	
ENTRY	10.57
LIVING DINING KITCHEN	44.26
STAIRCASE	4.40
HALLWAY 1	5.28
LAUNDRY	4.15
BEDROOM 1	19.21
BATHROOM 1	9.94
BEDROOM 2	12.51
BEDROOM 3	12.51
BATHROOM 2	9.57
BATHROOM 3	5.61
POOL	
LANDING	2.10
TOTAL USABLE FLOOR AREA	153.79

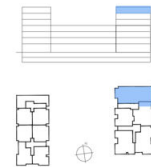
APARTMENT **6.H**



- WITKIN
- WARDROBES
- SMART CONTROL
- PANORAMA WINDOWS
- SOLAR CONTROL GLASS
- COMPARTMENT POOL
- COMPARTMENT FIRE
- SECURITY SYSTEM
- ART WALL
- BLINDS
- ACHEATING
- REFORCED WINDOW

**XO1** **WAVE**  
0m 1m 2m 3m 4m  
This document is a preliminary plan and not a construction plan. All the dimensions and areas are approximate values.

**XO JAY**



APARTMENT 6.H	
FLOOR USABLE FLOOR AREA	153.79
FLOOR GROSS FLOOR AREA	156.08
TERRACE 1	16.00
TERRACE 2	15.47
POOL	10.83
GROSS FLOOR AREA	201.54
GFA + COMMON AREAS	201.71
ROOM SURFACE	
ENTRY	10.57
LIVING DINING KITCHEN	44.26
STAIRCASE	4.40
HALLWAY 1	5.28
LAUNDRY	4.15
BEDROOM 1	19.21
BATHROOM 1	9.94
BEDROOM 2	12.51
BATHROOM 2	9.57
BEDROOM 3	12.51
BATHROOM 3	5.61
POOL	
LANDING	2.10
TOTAL USABLE FLOOR AREA	153.79

APARTMENT **6.H.R**

Questa pianta non è in scala. I documenti ci sono stati dati dal cliente. Per questo motivo, non possiamo garantire la precisione delle informazioni.

**CODICE OGGETTO: ES21379103\_6.H - 07007 Palma**

## Una prima impressione

If you are looking for something special and luxurious in the immediate vicinity of the sea in a fantastic Mediterranean city, you will find it. Luxury apartments with an exceptional offer are for sale. The complex with a total of 84 apartments is located in the up-and-coming location Nou Levant. The layout and layout of the apartments maximise natural light through floor-to-ceiling glass walls that open onto elegant private balconies, providing residents with an outdoor living area to enjoy Palma's mild climate. The striking indoor-outdoor concept creates open plan living spaces with panoramic electric windows and integrated outdoor living areas, along with beautiful roof terraces and gardens. There are three lines to choose from, creating unique properties with an individual feel, using the highest quality materials. The modern, individually designed and fully equipped kitchens with high quality Miele brand electrical appliances are not only for dining, but also for family life and entertaining. Bathrooms feature built-in or freestanding baths and advanced appliances and fixtures. They meet the highest standards and offer a blend of practicality and impeccable style. The penthouses have a spectacular private roof terrace with pool or Jacuzzi and barbecue area with ground planting, designed for privacy and overlooking charming Portixol. The communal outdoor deck offers a place to lounge or swim in an exceptional pool. There are also elegant sun loungers available. A place to relax and unwind is available. With the finest private amenities available exclusively to residents, surrounding an inviting multi-level garden lounge with palm trees, vegetation, overhead lights and fire pits. A true urban oasis. Equipped with sauna and steam room, showers and changing rooms. The fitness area is equipped with state-of-the-art fitness equipment. The XO Lounge offers spaces to live, work and enjoy. The common areas have been carefully designed with comfort and convenience in mind to meet the leisure and business needs of residents in a relaxed atmosphere, complemented by excellent facilities and services. A virtual tour is available for this property.

**CODICE OGGETTO: ES21379103\_6.H - 07007 Palma**

## Dettagli dei servizi

- Ceramic tiles GUBI cloud 120x120cm
- Underfloor heating
- Shadow joints (skirting boards)
- Suspended ceiling
- Interior doors: 1-leaf frameless passage door - Inverse Portaro
- intercom system
- Electrical installation
- Electric blinds
- Power sockets/ USB connections
- Intercom system
- Swimming Pool
- Double glazed windows
- Fitted kitchen
- Terrace with
- Municipal water supply
- Municipal electricity supply

**CODICE OGGETTO: ES21379103\_6.H - 07007 Palma**

## Partner di contatto

Per ulteriori informazioni, si prega di contattare la persona di riferimento:

Philip Bornewasser

---

Ronda Migjorn, 145B Maiorca - Lluçmajor

**E-Mail:** [lluçmajor@von-poll.com](mailto:lluçmajor@von-poll.com)

*To Disclaimer of von Poll Immobilien GmbH*

---

[www.von-poll.com](http://www.von-poll.com)