

Palma – Palma

Beautiful new build penthouse with roof terrace in Palma near Parc de Sa Riera

CODICE OGGETTO: ES24379020



PREZZO D'ACQUISTO: 335.000 EUR • SUPERFICIE NETTA: ca. 71 m² • VANI: 3

CODICE OGGETTO: ES24379020 - 07011 Palma – Palma

- A colpo d'occhio
- La proprietà
- Dati energetici
- Planimetrie
- Una prima impressione
- Dettagli dei servizi
- Tutto sulla posizione
- Ulteriori informazioni
- Partner di contatto

CODICE OGGETTO: ES24379020 - 07011 Palma – Palma

A colpo d'occhio

CODICE OGGETTO	ES24379020
Superficie netta	ca. 71 m ²
DISPONIBILE DAL	Previo accordo
Piano	4
Vani	3
Camere da letto	2
Bagni	2
Anno di costruzione	2025

Prezzo d'acquisto	335.000 EUR
Appartamento	Attico
Stato dell'immobile	Prima occupazione
Tipologia costruttiva	massiccio
Superficie lorda	ca. 0 m ²
Caratteristiche	Terrazza, Cucina componibile

CODICE OGGETTO: ES24379020 - 07011 Palma – Palma

Dati energetici

Fonte di
alimentazione

Elettrico

CODICE OGGETTO: ES24379020 - 07011 Palma – Palma

La proprietà



CODICE OGGETTO: ES24379020 - 07011 Palma – Palma

La proprietà



CODICE OGGETTO: ES24379020 - 07011 Palma – Palma

La proprietà



CODICE OGGETTO: ES24379020 - 07011 Palma – Palma

La proprietà



CERTIFICADO ENERGÉTICO

Consumo de energía
kWh / m² añoEmisiones
kg CO₂ / m² año

A más eficiente

B

C

D

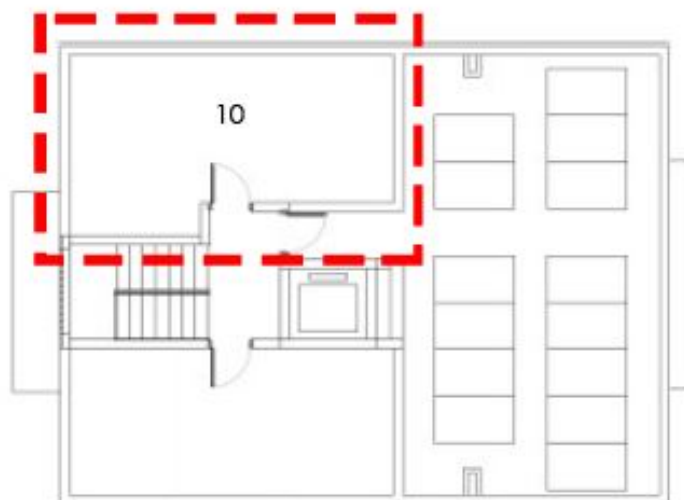
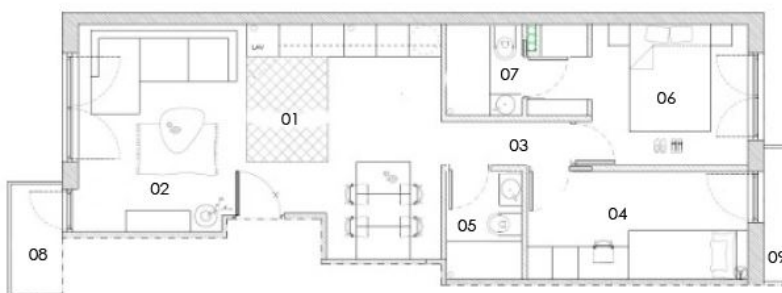
EN TRÁMITE

F

G menos eficiente

CODICE OGGETTO: ES24379020 - 07011 Palma – Palma

Planimetrie

**SUPERFICIES ÚTILES****m²**

10. TERRAZA EN CUBIERTA

21.54

Questa pianta non è in scala. I documenti ci sono stati dati dal cliente. Per questo motivo, non possiamo garantire la precisione delle informazioni.

CODICE OGGETTO: ES24379020 - 07011 Palma – Palma

Una prima impressione

This newly built penthouse with roof terrace is for sale in Palma, just a few minutes from the large Parc de Sa Riera. The apartment offers a living space of approx. 71 square meters. The kitchen with dining area is a large room that incorporates the living room. There are also two bedrooms and two bathrooms, one of which is en suite. The property impresses with its high-quality solid construction and has a full basement. The flooring consists of stylish tiles that lend a timeless charm. A modern fitted kitchen is already available and allows for a comfortable cooking experience. The kitchen is equipped with an induction hob, an oven and a microwave. A special highlight of this apartment are the two balconies and the 21 square meter roof terrace, which invites you to relax and enjoy the Mediterranean sun. The apartment building will be completed in the first quarter of 2025.

CODICE OGGETTO: ES24379020 - 07011 Palma – Palma

Dettagli dei servizi

- Double-glazed windows
- Roller shutters
- Fitted kitchen with induction hob, oven and microwave
- Exterior walls with thermal insulation
- Entrance door with security lock
- Kitchen sink with stainless steel and mixer tap
- Bathroom sink with mixer tap
- Hot water with aerothermal system
- Pre-installation of ducted air conditioning
- Installation of photovoltaic system
- Video intercom
- Terrace
- Balcony
- Private roof terrace
- Municipal water supply
- Municipal power supply

CODICE OGGETTO: ES24379020 - 07011 Palma – Palma

Tutto sulla posizione

Palma, the capital of the island, is also the largest city in Mallorca. It offers a large number of sights and is worth a visit at any time of year. To the east is the port of Portixol, which is not far from the Nou Llevant development area. This is also where the city beach "Platja de Can Pere Antoni" begins, a long sandy beach with a view of the cathedral. This imposing Gothic building with its large rose window and wrought-iron canopy by Gaudí is the city's landmark and tourist magnet. From here, you can walk into the winding old town with its numerous cafés and restaurants. The harbor promenade "Paseo Marítimo", on the other hand, invites you to take a stroll. It is lined with restaurants, boutiques and hotels. To the west of the city is the chic, renovated harbor district of Porto Pi. Here you will find an abundance of waterfront bars and fish restaurants along the promenade, the Palma Casino and the well-known Centro Porto Pi shopping center.

CODICE OGGETTO: ES24379020 - 07011 Palma – Palma

Ulteriori informazioni

We generally recommend having the building law situation checked by a specialist lawyer. All details are based exclusively on information provided by the owner or client. We assume no liability for the completeness, accuracy and timeliness of the information. The brokerage fee is payable by the vendor. Any taxes, notary and land registry costs incurred on the purchase are to be borne by the buyer.

CODICE OGGETTO: ES24379020 - 07011 Palma – Palma

Partner di contatto

Per ulteriori informazioni, si prega di contattare la persona di riferimento:

Philip Bornewasser

Ronda Migjorn, 145B Maiorca - Lluçmajor

E-Mail: llucmajor@von-poll.com

To Disclaimer of von Poll Immobilien GmbH

www.von-poll.com