

Bonanova – Palma

Penthouse for sale in Mediterranean villa with pool in Bonanova

CODICE OGGETTO: ES24379012



PREZZO D'ACQUISTO: 1.800.000 EUR • SUPERFICIE NETTA: ca. 200 m² • VANI: 5 • SUPERFICIE DEL TERRENO: 809 m²

CODICE OGGETTO: ES24379012 - 07015 Bonanova – Palma

- A colpo d'occhio
- La proprietà
- Dati energetici
- Planimetrie
- Una prima impressione
- Dettagli dei servizi
- Tutto sulla posizione
- Ulteriori informazioni
- Partner di contatto

CODICE OGGETTO: ES24379012 - 07015 Bonanova – Palma

A colpo d'occhio

CODICE OGGETTO	ES24379012
Superficie netta	ca. 200 m ²
DISPONIBILE DAL	Previo accordo
Piano	1
Vani	5
Camere da letto	4
Bagni	3
Anno di costruzione	1980
Garage/Posto auto	2 x Parcheggio interrato

Prezzo d'acquisto	1.800.000 EUR
Appartamento	Attico
Stato dell'immobile	completamente ristrutturato
Tipologia costruttiva	massiccio
Superficie lorda	ca. 0 m ²
Caratteristiche	Terrazza, Piscina, Cucina componibile

CODICE OGGETTO: ES24379012 - 07015 Bonanova – Palma

Dati energetici

Tipologia di riscaldamento	centralizzato
Fonte di alimentazione	Gas

CODICE OGGETTO: ES24379012 - 07015 Bonanova – Palma

La proprietà



CODICE OGGETTO: ES24379012 - 07015 Bonanova – Palma

La proprietà



CODICE OGGETTO: ES24379012 - 07015 Bonanova – Palma

La proprietà



CODICE OGGETTO: ES24379012 - 07015 Bonanova – Palma

La proprietà



CODICE OGGETTO: ES24379012 - 07015 Bonanova – Palma

La proprietà



CODICE OGGETTO: ES24379012 - 07015 Bonanova – Palma

La proprietà



CODICE OGGETTO: ES24379012 - 07015 Bonanova – Palma

La proprietà



CODICE OGGETTO: ES24379012 - 07015 Bonanova – Palma

La proprietà



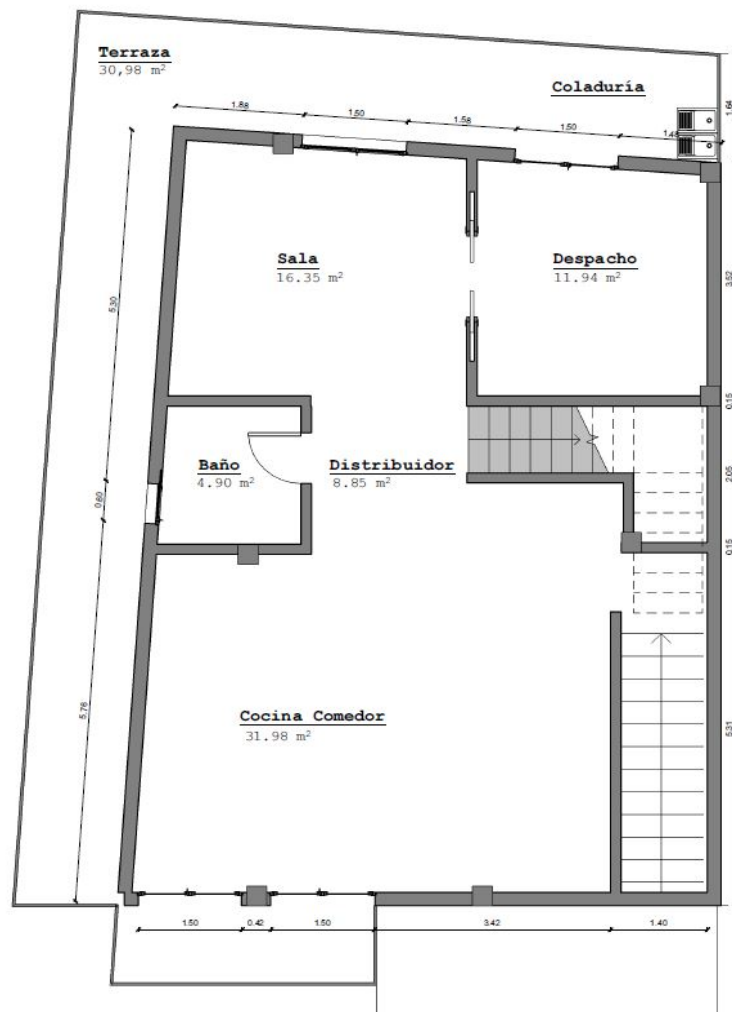
CODICE OGGETTO: ES24379012 - 07015 Bonanova – Palma

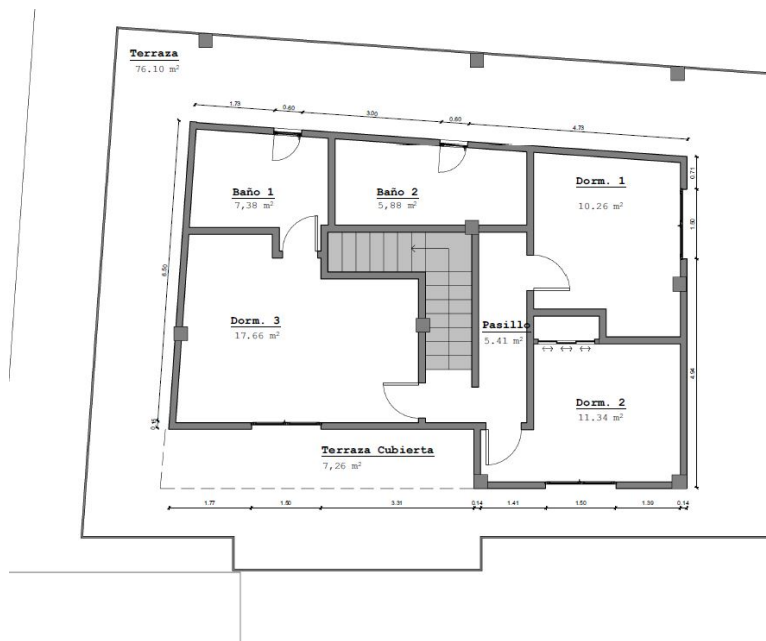
La proprietà



CODICE OGGETTO: ES24379012 - 07015 Bonanova – Palma

Planimetrie





Questa pianta non è in scala. I documenti ci sono stati dati dal cliente. Per questo motivo, non possiamo garantire la precisione delle informazioni.

CODICE OGGETTO: ES24379012 - 07015 Bonanova – Palma

Una prima impressione

This Mediterranean penthouse apartment distributed over 2 floors is located in the preferred area of Bonanova - Palma. With a total living area of approx. 200 square meters, it offers enough space for a family. The large penthouse has been renovated with the highest quality materials. The high-quality fittings include marble floors and a modern open fitted kitchen. The open-plan living and dining area offers maximum brightness thanks to its large windows. There are four bedrooms and three bathrooms. The terrace offers a beautiful view of the sea. Residents also have access to a large garden with a swimming pool, which provides a refreshing cool-down on hot days. The apartment has an underground parking space and a cellar.

CODICE OGGETTO: ES24379012 - 07015 Bonanova – Palma

Dettagli dei servizi

- Double-glazed windows
- Central heating
- Air conditioning hot/cold
- Fitted kitchen
- Swimming pool
- Sea view
- Balcony
- Terrace
- Garden
- Underground parking space
- Cellar room
- Municipal water supply
- Municipal power supply

CODICE OGGETTO: ES24379012 - 07015 Bonanova – Palma

Tutto sulla posizione

Palma, the capital of the island, is also the largest city in Mallorca. It offers a large number of sights and is worth a visit at any time of year. To the east is the port of Portixol, which is not far from the Nou Llevant development area. This is also where the city beach "Platja de Can Pere Antoni" begins, a long sandy beach with a view of the cathedral. This imposing Gothic building with its large rose window and wrought-iron canopy by Gaudí is the city's landmark and tourist magnet. From here, you can walk into the winding old town with its numerous cafés and restaurants. The harbor promenade "Paseo Marítimo", on the other hand, invites you to take a stroll. It is lined with restaurants, boutiques and hotels. To the west of the city is the chic, renovated harbor district of Porto Pi. Here you will find an abundance of waterfront bars and fish restaurants along the promenade, the Palma Casino and the well-known Centro Porto Pi shopping center.

CODICE OGGETTO: ES24379012 - 07015 Bonanova – Palma

Ulteriori informazioni

We generally recommend having the building law situation checked by a specialist lawyer. All details are based exclusively on information provided by the owner or client. We assume no liability for the completeness, accuracy and timeliness of the information. The brokerage fee is payable by the vendor. Any taxes, notary and land registry costs incurred on the purchase are to be borne by the buyer.

CODICE OGGETTO: ES24379012 - 07015 Bonanova – Palma

Partner di contatto

Per ulteriori informazioni, si prega di contattare la persona di riferimento:

Philip Bornewasser

Ronda Migjorn, 145B Maiorca - Lluçmajor

E-Mail: lluçmajor@von-poll.com

To Disclaimer of von Poll Immobilien GmbH

www.von-poll.com