

Amsterdam

Menarahof 24

VP azonosító: NL24185497



VÉTELÁR: 945.000 EUR • HASZNOS LAKÓTÉR: ca. 140 m² • SZOBÁK: 4

VP azonosító: NL24185497 - 1043 EV Amsterdam

- Áttekintés
- Az ingatlan
- Áttekintés: Energia adatok
- Az els? benyomás
- Részletes felszereltség
- Minden a helyszínr?l
- További információ / adatok
- Kapcsolattartó

VP azonosító: NL24185497 - 1043 EV Amsterdam

Áttekintés

VP azonosító	NL24185497	Vételár	945.000 EUR
Hasznos lakótér	ca. 140 m ²	Lakás	Apartment
Szobák	4	Hasznos terület	ca. 0 m ²
Hálósobák	3		
FÜRDŐSZOBÁK	1		
ÉPÍTÉS ÉVE	2024		

VP azonosító: NL24185497 - 1043 EV Amsterdam

Áttekintés: Energia adatok

Energiahatékonysági A+
besorolás /
Energetikai
tanúsítvány

VP azonosító: NL24185497 - 1043 EV Amsterdam

Az ingatlan



VP azonosító: NL24185497 - 1043 EV Amsterdam

Az ingatlan



VP azonosító: NL24185497 - 1043 EV Amsterdam

Az ingatlan



VP azonosító: NL24185497 - 1043 EV Amsterdam

Az ingatlan



VP azonosító: NL24185497 - 1043 EV Amsterdam

Az ingatlan



VP azonosító: NL24185497 - 1043 EV Amsterdam

Az ingatlan



VP azonosító: NL24185497 - 1043 EV Amsterdam

Az ingatlan



VP azonosító: NL24185497 - 1043 EV Amsterdam

Az ingatlan



VP azonosító: NL24185497 - 1043 EV Amsterdam

Az ingatlan



VP azonosító: NL24185497 - 1043 EV Amsterdam

Az ingatlan



VP azonosító: NL24185497 - 1043 EV Amsterdam

Az ingatlan



VP azonosító: NL24185497 - 1043 EV Amsterdam

Az ingatlan



VP azonosító: NL24185497 - 1043 EV Amsterdam

Az ingatlan



VP azonosító: NL24185497 - 1043 EV Amsterdam

Az ingatlan



VP azonosító: NL24185497 - 1043 EV Amsterdam

Az ingatlan



VP azonosító: NL24185497 - 1043 EV Amsterdam

Az ingatlan



VP azonosító: NL24185497 - 1043 EV Amsterdam

Az ingatlan



VP azonosító: NL24185497 - 1043 EV Amsterdam

Az ingatlan



VP azonosító: NL24185497 - 1043 EV Amsterdam

Az ingatlan



VP azonosító: NL24185497 - 1043 EV Amsterdam

Az ingatlan



VP azonosító: NL24185497 - 1043 EV Amsterdam

Az ingatlan



VP azonosító: NL24185497 - 1043 EV Amsterdam

Az ingatlan



VP azonosító: NL24185497 - 1043 EV Amsterdam

Az ingatlan



VP azonosító: NL24185497 - 1043 EV Amsterdam

Az ingatlan



VP azonosító: NL24185497 - 1043 EV Amsterdam

Az ingatlan



VP azonosító: NL24185497 - 1043 EV Amsterdam

Az ingatlan



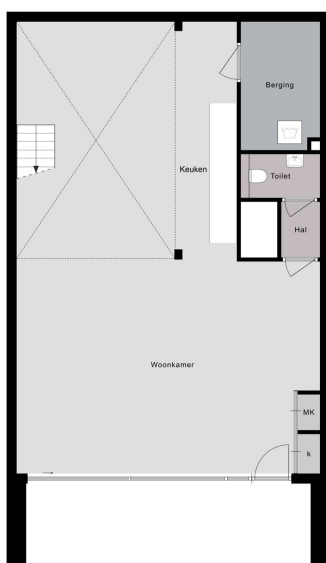
VP azonosító: NL24185497 - 1043 EV Amsterdam

Az ingatlan



VP azonosító: NL24185497 - 1043 EV Amsterdam

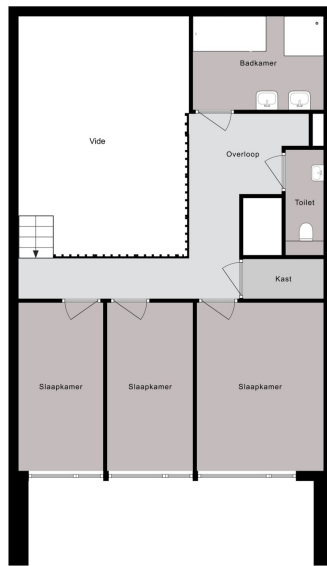
Az ingatlan



Begane grond

VP azonosító: NL24185497 - 1043 EV Amsterdam

Az ingatlan



Entresol



VP azonosító: NL24185497 - 1043 EV Amsterdam

Az ingatlan



VP azonosító: NL24185497 - 1043 EV Amsterdam

Az els? benyomás

VERTICAL CENTER IS COMPLETED! Beautiful town house in sustainable new construction project VERTICAL with perpetual leasehold. Discover this beautiful new-build apartment (140 m2) spread over two floors, located in the already completed VERTICAL project. This modern home, part of VERTICAL, offers a spacious living space with open kitchen, 3 bedrooms, bathroom, 2 separate toilets, indoor storage and a terrace (approximately 11 m2). Within walking distance of Sloterdijk Station, this town house is in an ideal location.

VP azonosító: NL24185497 - 1043 EV Amsterdam

Részletes felszereltség

This apartment is located in the low-rise building of the VERTICAL CENTER project, divided over the ground floor and the mezzanine floor.

Ground floor: Direct access to the spacious open living space with high windows and a sliding door to the front terrace. The yet to be installed kitchen is located at the back of the apartment with a ceiling height of 4.20 meters and has an open staircase leading upstairs. A toilet with vestibule and an internal storage room with washing machine connection can also be found on this floor.

Mezzanine floor: Spacious landing with access to all areas. The three bedrooms are located at the front, in the middle a second separate toilet with sink and a storage room. At the rear is the bathroom with a bath, shower and double sink.

VP azonosító: NL24185497 - 1043 EV Amsterdam

Minden a helyszínról?

Sloterdijk station in Amsterdam-West is undergoing a rapid transformation from monoculture to a mixed living and working area. It is a true hub location, easily accessible and close to amenities. Amsterdam-Sloterdijk train, bus and metro station are within walking distance. You can reach Schiphol Airport or the center of Amsterdam within fifteen minutes. A ten-minute bike ride will take you to Westerpark, and a half-hour drive will take you to the sea for a relaxing day at the beach.

VP azonosító: NL24185497 - 1043 EV Amsterdam

További információ / adatok

VERTICAL This property is part of the VERTICAL project, consisting of 3 sub-areas: "East" with a high tower with 112 apartments, "Center" with 14 town homes and garden homes in low-rise buildings, and "West" with 42 (private sector) rental homes. The project was designed by 5 Dutch architects and meets contemporary sustainability requirements. VERTICAL will be one of the most sustainable buildings in the Netherlands. The design is organic with lots of greenery through vertical gardens. In addition to the transformation of the neighborhood into a diverse living-working area, attention is paid to conviviality with the "shared living" concept. Meet friends or neighbors on a floor in the residential tower. The complex also has a bar/restaurant, a gym and communal work space.

VP azonosító: NL24185497 - 1043 EV Amsterdam

Kapcsolattartó

További információért forduljon a kapcsolattartójához:

Joan Dik, Marie Christine Lodewijk & Elisabeth van Zijverden

De Lairesestraat 51 Amszterdam
E-Mail: info@von-poll.nl

To Disclaimer of von Poll Immobilien GmbH

www.von-poll.com