

Mets - Kalimarmaro, Athens Center

Mirage Vista

????????? ??????????: 1062635



???? ??????????: 10.000 EUR

???????? ??????????: 1062635 - 11636 Mets - Kalimarmaro, Athens Center

- ?? ??? ??????
- ?? ??????????
- ??? ?????? ???????????
- ?????????????? ??????????????????

???????? ??????????: 1062635 - 11636 Mets - Kalimarmaro, Athens Center

?? ??? ??????

???????? ??????????	1062635	????? ??????????	10.000 EUR
????????????? ???	3	?????????????	???????
?????????????		????????????? ????????	ca. 246 m ²
?????????????	2		

??????? ???????: 1062635 - 11636 Mets - Kalimarmaro, Athens Center

?? ????????



???????? ??????????: 1062635 - 11636 Mets - Kalimarmaro, Athens Center

?? ?????????



???????? ??????????: 1062635 - 11636 Mets - Kalimarmaro, Athens Center

?? ????????



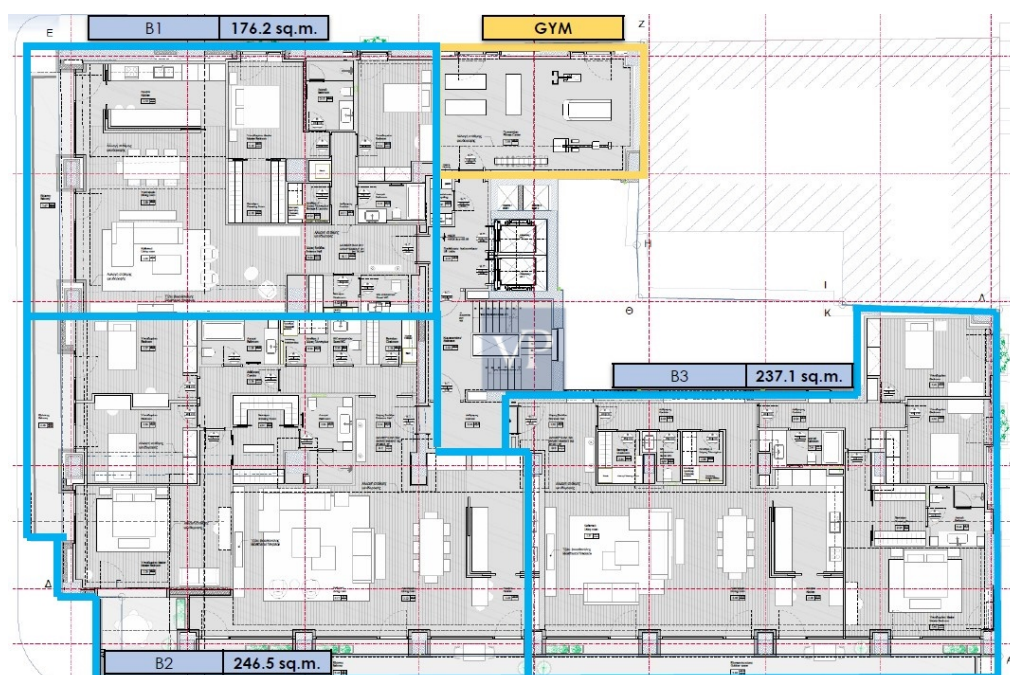
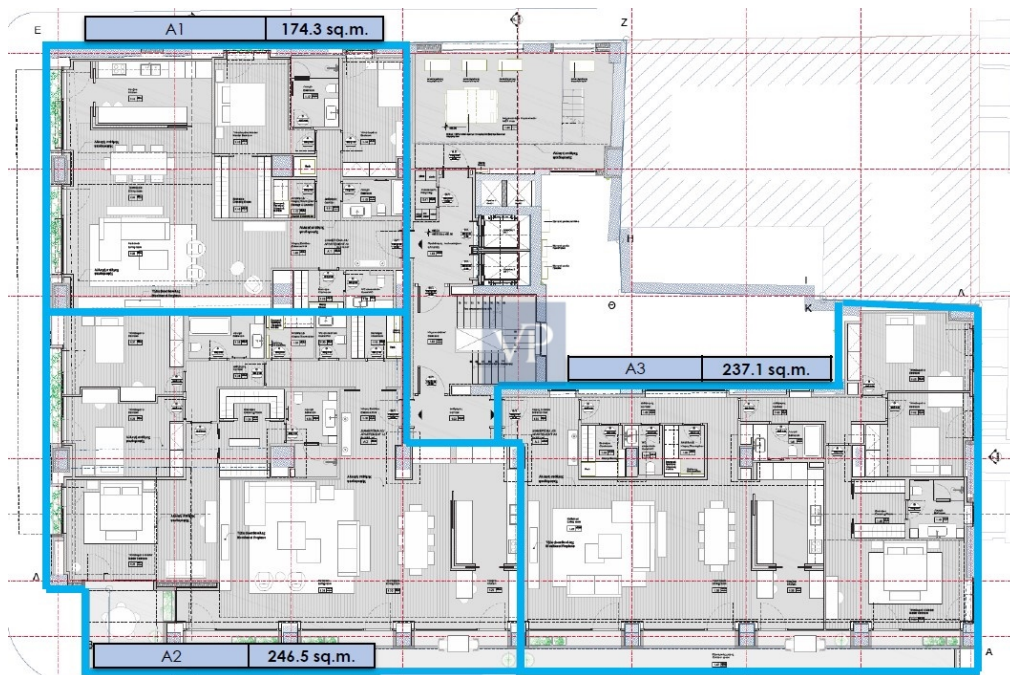
???????? ??????????: 1062635 - 11636 Mets - Kalimarmaro, Athens Center

?? ?????????



??????? ????????: 1062635 - 11636 Mets - Kalimarmaro, Athens Center

?? ????????



??????? ???????: 1062635 - 11636 Mets - Kalimarmaro, Athens Center

??? ?????? ???????????

Mirage Vista is a truly exceptional apartment, offering a luxurious living experience in the heart of Athens' vibrant Mets-Kalimarmaro neighborhood. This stunning 1st-floor corner unit has been completely renovated in 2024, combining modern amenities with timeless charm. Its spacious design and expansive windows invite natural light to flood the open-concept living spaces, creating a warm, inviting atmosphere. Featuring three generously-sized bedrooms, including a master suite that serves as a personal retreat, Mirage Vista ensures ultimate comfort and privacy. The two sleek bathrooms and additional guest WC are beautifully designed for both style and convenience. The heart of the apartment is its elegant living room, offering a seamless flow into the contemporary kitchen—an ideal space for both relaxing and entertaining. With energy efficiency at its core, Mirage Vista boasts an A+ energy certificate, thanks to its autonomous heat pump system, thermal break aluminum frames, and double-glazed windows. These features not only guarantee a comfortable year-round climate but also contribute to a sustainable and eco-friendly lifestyle. The wooden floors throughout add a touch of warmth, enhancing the overall sophisticated design. Situated on a corner, the apartment offers unobstructed views of the city, providing a serene backdrop to the dynamic energy of Athens. Its prime location places you just moments away from the city center, the Acropolis, and cultural landmarks, while offering a peaceful retreat from the hustle and bustle of the city. With easy access to transportation, everything Athens has to offer is right at your doorstep. Mirage Vista also includes underground parking and ample storage, making it as functional as it is beautiful. This is more than just a place to live; it's a sanctuary designed for those who appreciate modern living, elegance, and the vibrancy of city life.

???????? ??????????: 1062635 - 11636 Mets - Kalimarmaro, Athens Center

????????????? ??????????????????

??? ????????????????? ??????????????, ????????????????? ?? ??? ?????????? ????????????????? ???:

VON POLL REAL ESTATE Athens

Kifisias Avenue 227 Athen
E-Mail: salesgreece@von-poll.com

To Disclaimer of von Poll Immobilien GmbH

www.von-poll.com