

Glyfada, Athens Riviera

Faros Luxury Penthouse Maisonette

????????? ??????????: 966830



???? ?????????: 2.750.000 EUR

??????? ???????: 966830 - Glyfada, Athens Riviera

- ?? ??? ??????
- ?? ????????
- ??? ?????? ??????????
- ????????????? ????????????????

???????? ??????????: 966830 - Glyfada, Athens Riviera

?? ??? ??????

???????? ??????????	966830	????? ???????	2.750.000 EUR
????????????? ??? ???????????	4	?????????????	???????
???????????	5	????????????? ???????	ca. 248 m ²
????? ??????????????	2024		

???????? ??????????: 966830 - Glyfada, Athens Riviera

?? ?????????



???????? ??????????: 966830 - Glyfada, Athens Riviera

?? ?????????



???????? ?????????: 966830 - Glyfada, Athens Riviera

?? ?????????



???????? ??????????: 966830 - Glyfada, Athens Riviera

?? ?????????



???????? ??????????: 966830 - Glyfada, Athens Riviera

?? ?????????



???????? ?????????: 966830 - Glyfada, Athens Riviera

?? ?????????



???????? ??????????: 966830 - Glyfada, Athens Riviera

?? ?????????



???????? ??????????: 966830 - Glyfada, Athens Riviera

?? ?????????



???????? ??????????: 966830 - Glyfada, Athens Riviera

?? ?????????



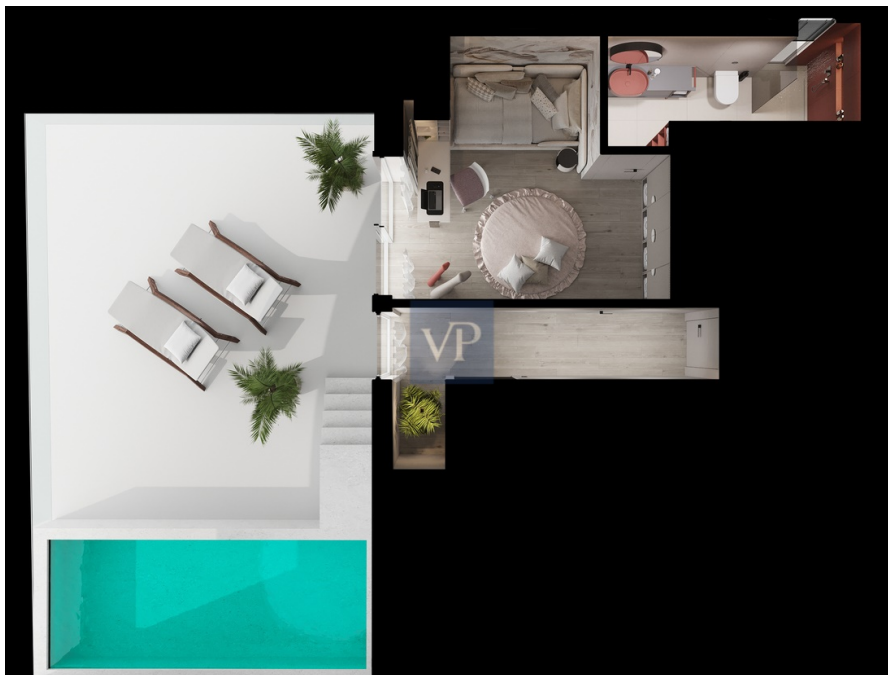
???????? ??????????: 966830 - Glyfada, Athens Riviera

?? ?????????



???????? ??????????: 966830 - Glyfada, Athens Riviera

?? ?????????



??????? ???????: 966830 - Glyfada, Athens Riviera

??? ?????? ???????????

Faros Luxury Penthouse Maisonette An architectural masterpiece under construction in the heart of Glyfada beckons the most discerning resident. This expansive 248 sq. m. maisonette, spread across the fourth (172 sq. m.) and fifth (76.2 sq. m.) floors of a meticulous build in the centre of Glyfada, offers a sanctuary of unparalleled luxury. Soaring ceilings and expansive surrounding windows seamlessly integrate the breathtaking sea and mountain vistas, creating a symphony of light and space. A state-of-the-art gourmet kitchen with island bench, equipped with premium appliances, effortlessly elevates the living and dining areas to a luxurious entertaining oasis. Four serene bedrooms (one master) each boasting elevated ceilings and spa-like en-suites, plus an additional bathroom (five in total) invite the ultimate in relaxation and privacy. Ascend to the fifth floor via the internal staircase or more conveniently via the private internal elevator for total ease and comfort. Unwind and relax in the private pool and enjoy the panoramic sea views from the tranquil fifth floor balcony. Three secure underground car parking spaces and a storage area are provided with this residence. For state-of-the-art living in a smart home with proximity to Glyfada's vibrant promenade, beaches and restaurants, this opulent penthouse maisonette ensure effortless living in a sophisticated haven.

???????? ??????????: 966830 - Glyfada, Athens Riviera
??

??? ???, ????????????????????? ?? ??? ???:

VON POLL REAL ESTATE Athens



Kifisias Avenue 227 Athen
E-Mail: salesgreece@von-poll.com

To Disclaimer of von Poll Immobilien GmbH



www.von-poll.com