

Kifissia, Athens North

# Suburbian Lux Elegant Maisonette for rent, Kifissia, 250 sq.m., €3.200

????????? ??????????: 759043



???? ??????????: 3.000 EUR • ?????? ????: 1.750 m<sup>2</sup>

???????? ??????????: 759043 - Kifissia, Athens North

- ?? ??? ??????
- ?? ??????????
- ??? ?????? ???????????
- ?????????????? ??????????????????

???????? ??????????: 759043 - Kifissia, Athens North

?? ??? ??????

???????? ??????????	759043	?????????????	???????
????????????? ??? ???????????	4	???????????? ??????	ca. 250 m <sup>2</sup>
???????????	5	????????????????????????? ???????	ca. 0 m <sup>2</sup>

???????? ??????????: 759043 - Kifissia, Athens North

?? ?????????



??????? ???????: 759043 - Kifissia, Athens North

?? ????????



??????? ???????: 759043 - Kifissia, Athens North

?? ????????



??????? ???????: 759043 - Kifissia, Athens North

?? ????????



??????? ???????: 759043 - Kifissia, Athens North

?? ????????





??????? ???????: 759043 - Kifissia, Athens North

?? ????????



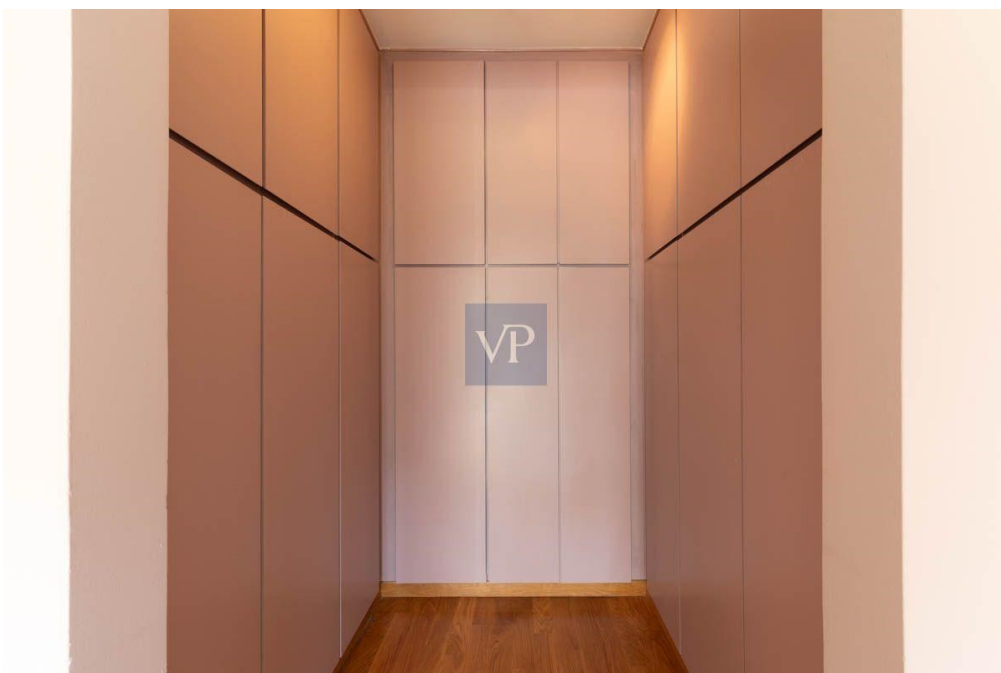
???????? ??????????: 759043 - Kifissia, Athens North

?? ?????????



???????? ??????????: 759043 - Kifissia, Athens North

?? ?????????



???????? ??????????: 759043 - Kifissia, Athens North

?? ??????????



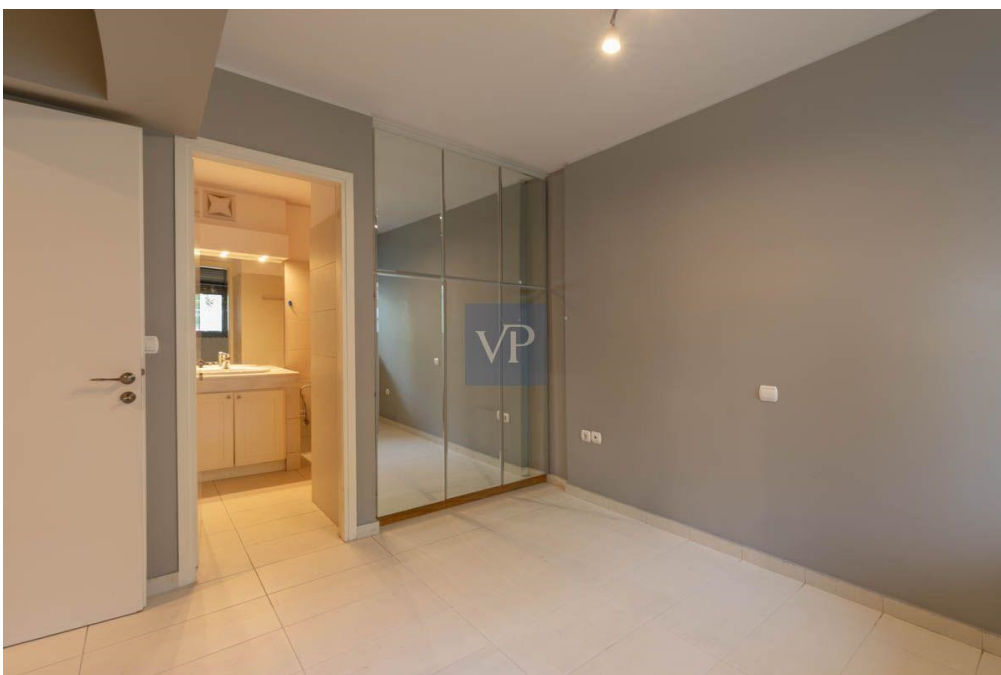
???????? ??????????: 759043 - Kifissia, Athens North

?? ?????????



??????? ????????: 759043 - Kifissia, Athens North

?? ????????



??????? ???????: 759043 - Kifissia, Athens North

?? ????????



??????? ???????: 759043 - Kifissia, Athens North

??? ?????? ???????????

Suburban Lux Elegant Maisonette for rent, Kifissia, 250 sq.m., €3.200 Discover a haven of sophistication in Kifissia's coveted Strofilia neighborhood with this exquisite 4-bedroom semi-detached maisonette. Nestled within an upscale gated community, this residence offers a timeless blend of classic aesthetics, meticulous craftsmanship, and modern amenities. Spanning 250 sq.m. across two levels, this home boasts a grand wooden staircase and an elevator for easy access. The open-plan living room with a fireplace seamlessly connects to a spacious dining area, bathed in natural light through floor-to-ceiling windows that open to a private garden. The well-appointed kitchen features high-quality materials and modern cabinets, while two bright bedrooms and two spacious bathrooms enhance the main level. The master bedroom dazzles with an en-suite bathroom, walk-in closet, and garden access, while a second bedroom serves as a home office. On the lower level, three more bedrooms, including a master suite, offer comfort and space. An open area with a kitchenette, laundry room, storage, and a playroom/family room complete this level. The property includes two parking spaces accessible via an elevator or outside entrance. Oakwood floors grace the living areas, while ceramic tiles enhance bathrooms, kitchen, and terraces. Wood interior frames and aluminum exterior frames with double-glazed windows add to the property's charm. Additional amenities include natural gas heating, hot water supply boiler, air conditioning, and an alarm system. Conveniently located, you can walk to local markets, restaurants, shops, and sports facilities while enjoying the lush greenery of the area. Experience luxury, privacy, and elegance in this exceptional Kifissia residence.



???????? ??????????: 759043 - Kifissia, Athens North

????????????? ??????????????????

?? ?????????????? ??????????????, ?????????????? ?? ?? ?????????? ?????????????? ???:

VON POLL REAL ESTATE Athens

---

Kifisias Avenue 227 Athen  
E-Mail: [salesgreece@von-poll.com](mailto:salesgreece@von-poll.com)

*To Disclaimer of von Poll Immobilien GmbH*

---

[www.von-poll.com](http://www.von-poll.com)