

Athens North – North

Época Haven

???????? ?????: GR24373190



???? ?????: 2.000.000 EUR • ?????: ca. 150 m²

??????? ?????????: GR24373190 - 154 52 Athens North – North

- ☐ ?? ??? ??????
- ☐ ?? ????????
- ☐ ??? ?????? ??????????
- ☐ ????????????? ??????????????

??????? ?????????: GR24373190 - 154 52 Athens North – North

?? ??? ??????

???????? ?????????	GR24373190	???? ?????	2.000.000 EUR
????????	ca. 150 m²	????????	??????
???????????? ??	???????? ?? ?? ????????	????????????????????	ca. 0 m²
???????????? ?? ????????	2	??????	?????
????????	2		
???? ?????????	1960		
????? ?????????	1 x ?????????? ????? ?????????		
????? ?????????	1 x ?????????? ????? ?????????		

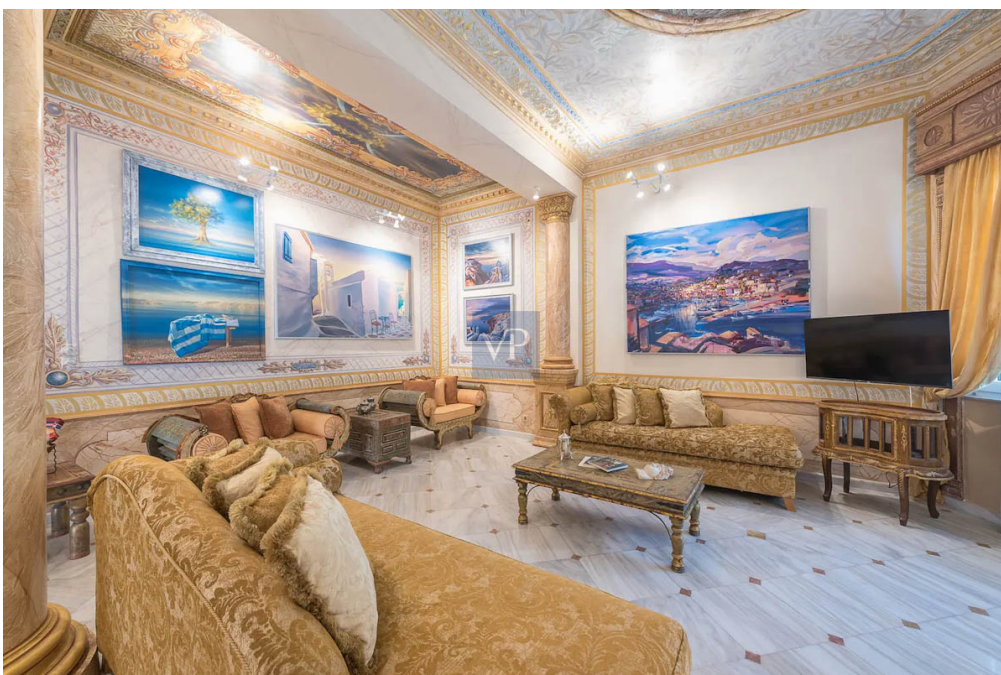
???????? ?????????: GR24373190 - 154 52 Athens North – North

?? ?????????



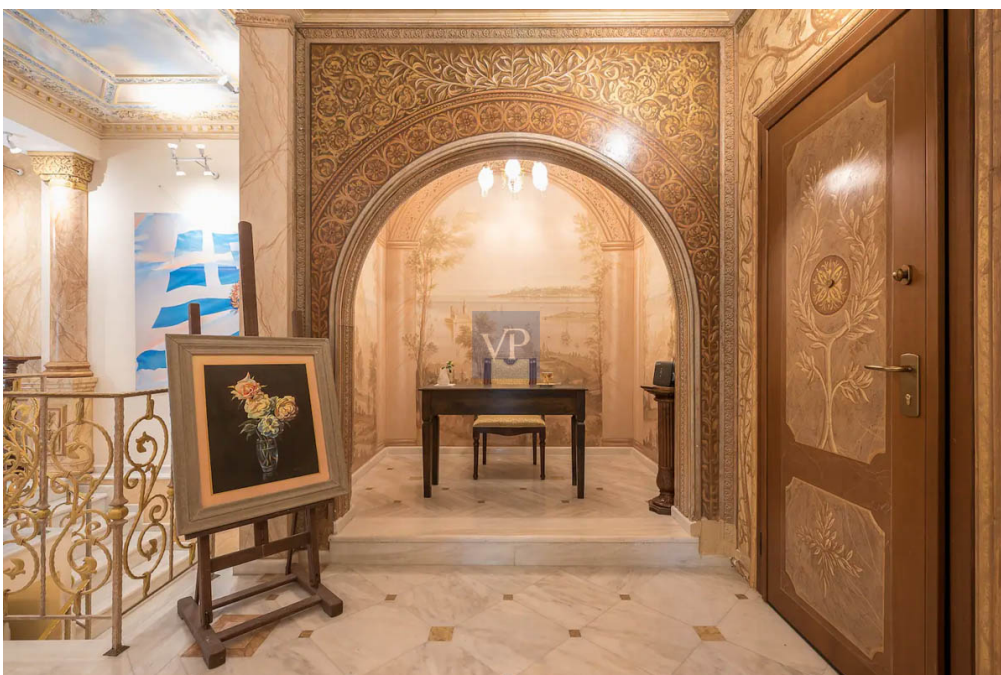
??????? ???????: GR24373190 - 154 52 Athens North – North

?? ????????



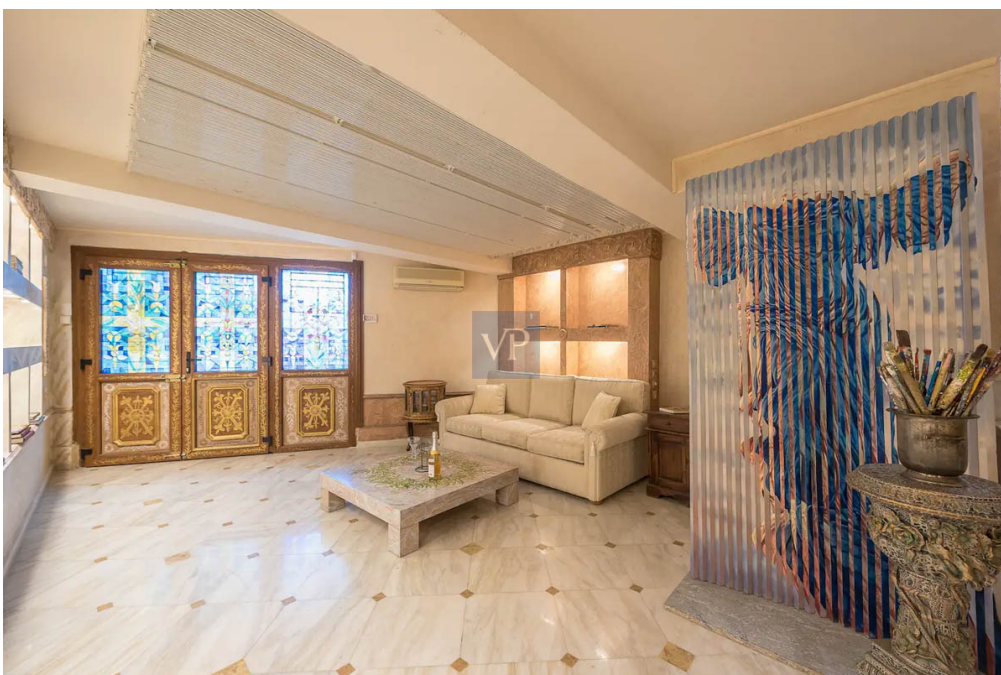
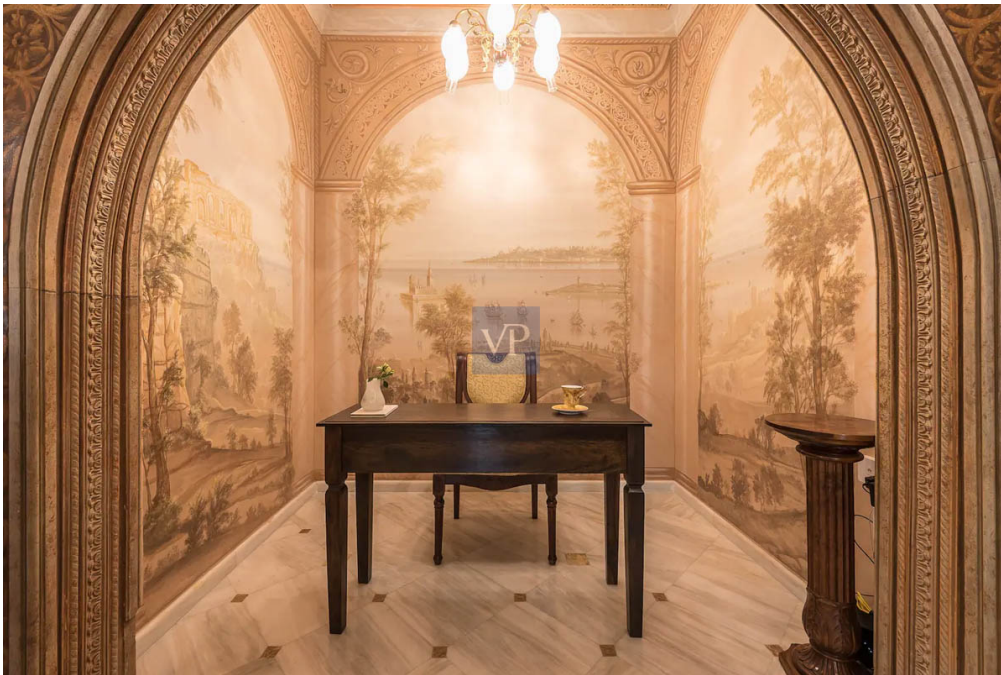
???????? ??: GR24373190 - 154 52 Athens North – North

?? ????????



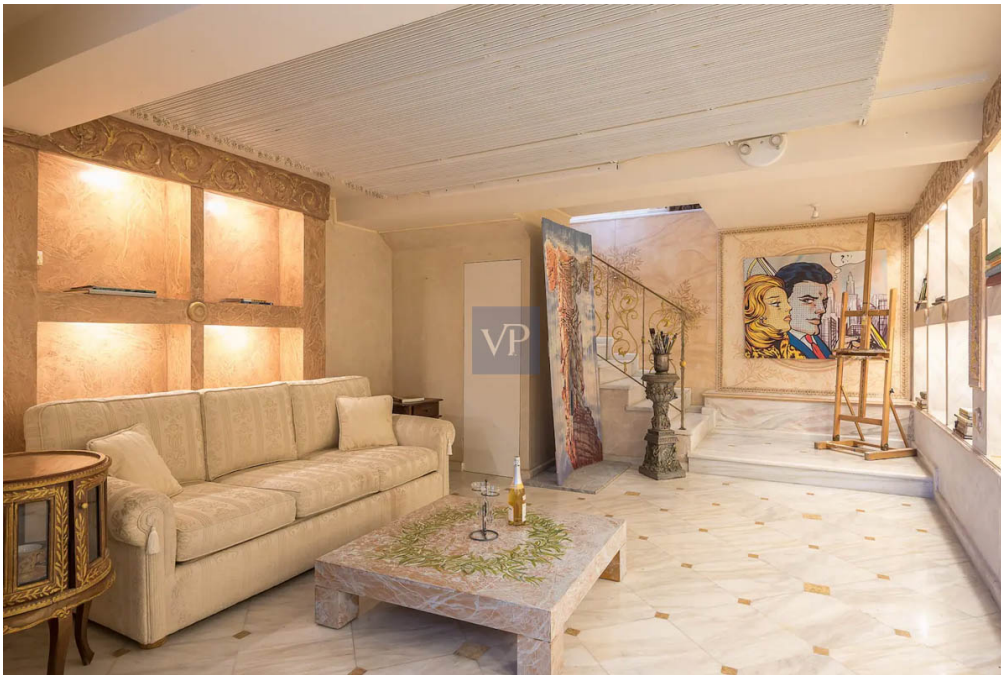
??????? ???????? : GR24373190 - 154 52 Athens North – North

?? ????????



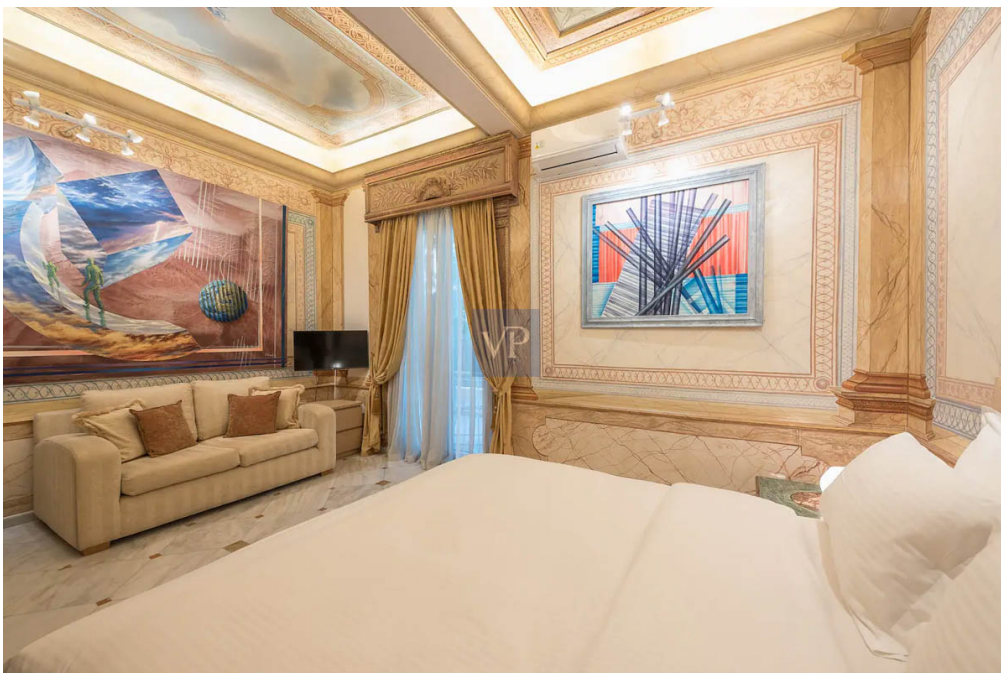
???????? ?????????: GR24373190 - 154 52 Athens North – North

?? ?????????



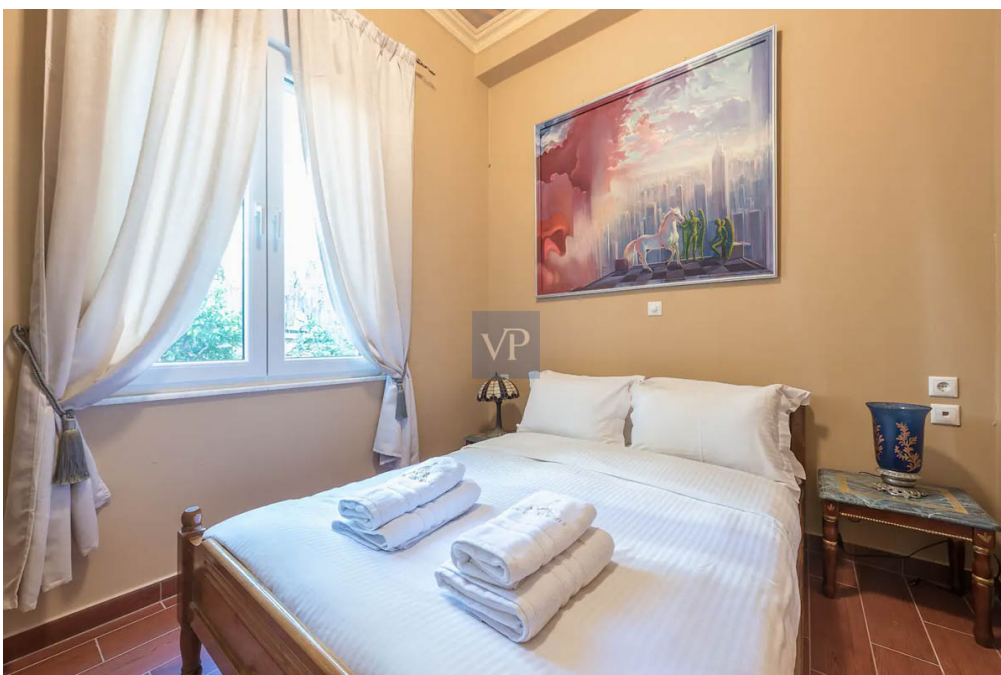
??????? ???????? : GR24373190 - 154 52 Athens North – North

?? ????????



???????? ?????: GR24373190 - 154 52 Athens North – North

?? ????????



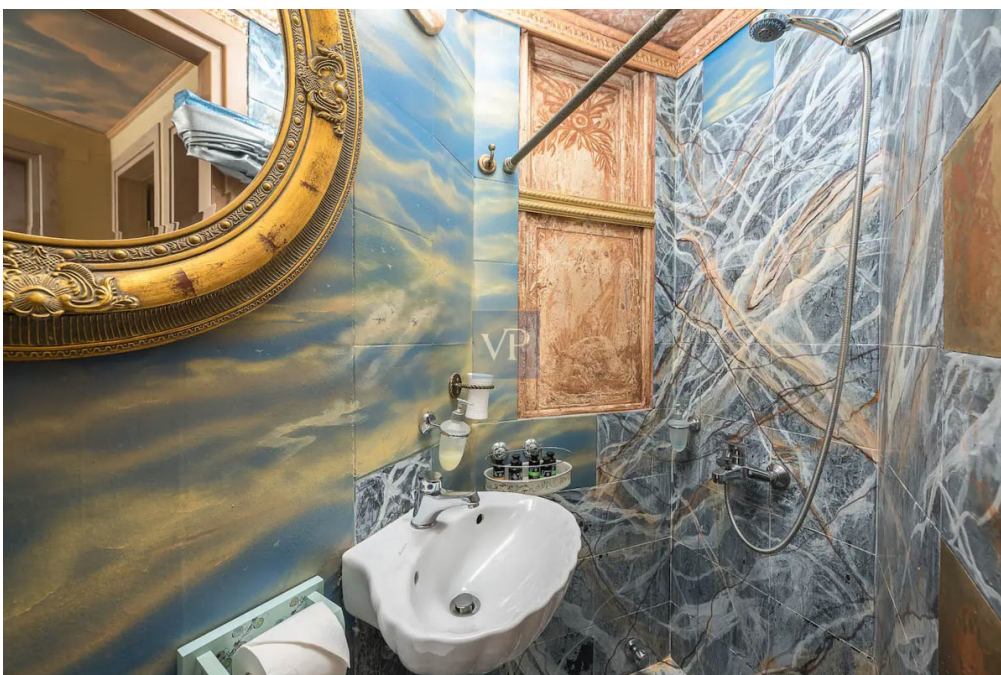
??????? ???????? : GR24373190 - 154 52 Athens North – North

?? ????????



??????? ???????? : GR24373190 - 154 52 Athens North – North

?? ????????



??????? ???????? : GR24373190 - 154 52 Athens North – North

?? ????????



??????? ???????? : GR24373190 - 154 52 Athens North – North

?? ????????



??????? ???????? GR24373190 - 154 52 Athens North – North

??? ?????? ?????????

Welcome to Epoch Haven, a timeless masterpiece nestled in the prestigious neighborhood of Paleo Psychiko. This exquisite residence, encompassing 150 sq.m. on a 250-square-meter plot, is a captivating blend of history, artistry, and modern luxury. Constructed in 1960 and meticulously renovated in 2012, this unique dwelling is not just a home but a canvas reflecting the artistic influences of Constantinople. Crafted and owned by a distinguished artist honored by the United Nations, the house is a testament to cultural richness and sophistication. As you step through the separate impressive entrance, you are greeted by two spacious reception areas adorned with a fireplace, offering a warm and inviting ambiance. The interiors boast high aesthetics with murals depicting the enchanting scenes of the Bosphorus, ceilings replicating the grandeur of the Dolmabahçe Palace, and cyan wreaths reminiscent of the columns of Hagia Sophia. The white marble floors sourced from Constantinople exude timeless elegance, complemented by 24-carat gold details and wreaths that add an opulent touch. The residence features two large bedrooms, a well-equipped kitchen with brand-name appliances, a bathroom, a guest toilet, and three balconies that offer breathtaking views. The internal staircase, furnished rooms, air conditioning, and solar water heater further enhance the living experience. A security system, underground storage, parking space, and aluminum windows with double glazing ensure both comfort and safety. Externally, Epoch Haven presents a terrace, a garden, and a pool, creating an oasis of tranquility. The frontal orientation allows for ample natural light, while the corner location adds a touch of exclusivity. With easy accessibility to the sea, Embassies of Thailand and Kuwait, markets, and public transportation, this residence epitomizes luxury living in an exceptional location. Haven stands as a testament to refined living, offering a harmonious blend of history, art, and

??????? ?????????: GR24373190 - 154 52 Athens North – North

????????????? ???????????????

??? ?????????????? ??????????????, ?????????????? ?? ??? ?????????? ?????????????? ???:

VON POLL REAL ESTATE Athens

Kifisias Avenue 227 ?????
E-Mail: salesgreece@von-poll.com

To Disclaimer of von Poll Immobilien GmbH

www.von-poll.com