

Vence – Provence-Alpes-Côte d'Azur

Stone Built Property with Spectacular Views

????????? ??????????: 82511816



???? ??????: 5.850.000 EUR • ??????????: ca. 502 m² • ?????????: 12 • ?????? ????: 3.800 m²

??????? ????????: 82511816 - 06140 Vence – Provence-Alpes-Côte d'Azur

- ?? ??? ??????
- ?? ????????
- ???????????? ??????????
- ??? ?????? ??????????
- ????????????? ????????????????

???????? ??????????: 82511816 - 06140 Vence – Provence-Alpes-Côte d'Azur

?? ??? ???????

???????? ??????????	82511816	????? ???????	5.850.000 EUR
????????????	ca. 502 m ²	??????	?????
?????????????? ???	????????? ?? ?? ?????????	?????????? ???????	ca. 502 m ²
?????????	12	???????????????????? ???????	ca. 0 m ²
		?????????	????????, ??????

???????? ??????????: 82511816 - 06140 Vence – Provence-Alpes-Côte d'Azur

?????????????? ????????????

??????????
??????????

?????????

???? ????????????

????

??????? ????????: 82511816 - 06140 Vence – Provence-Alpes-Côte d'Azur

?? ????????



??????? ???????: 82511816 - 06140 Vence – Provence-Alpes-Côte d'Azur

?? ????????



??????? ????????: 82511816 - 06140 Vence – Provence-Alpes-Côte d'Azur

?? ????????



??????? ????????: 82511816 - 06140 Vence – Provence-Alpes-Côte d'Azur

?? ????????



??????? ???????: 82511816 - 06140 Vence – Provence-Alpes-Côte d'Azur

?? ????????



??????? ???????: 82511816 - 06140 Vence – Provence-Alpes-Côte d'Azur

?? ????????



??????? ???????: 82511816 - 06140 Vence – Provence-Alpes-Côte d'Azur

?? ????????



??????? ????????: 82511816 - 06140 Vence – Provence-Alpes-Côte d'Azur

?? ????????



??????? ????????: 82511816 - 06140 Vence – Provence-Alpes-Côte d'Azur

?? ????????



??????? ????????: 82511816 - 06140 Vence – Provence-Alpes-Côte d'Azur

?? ????????



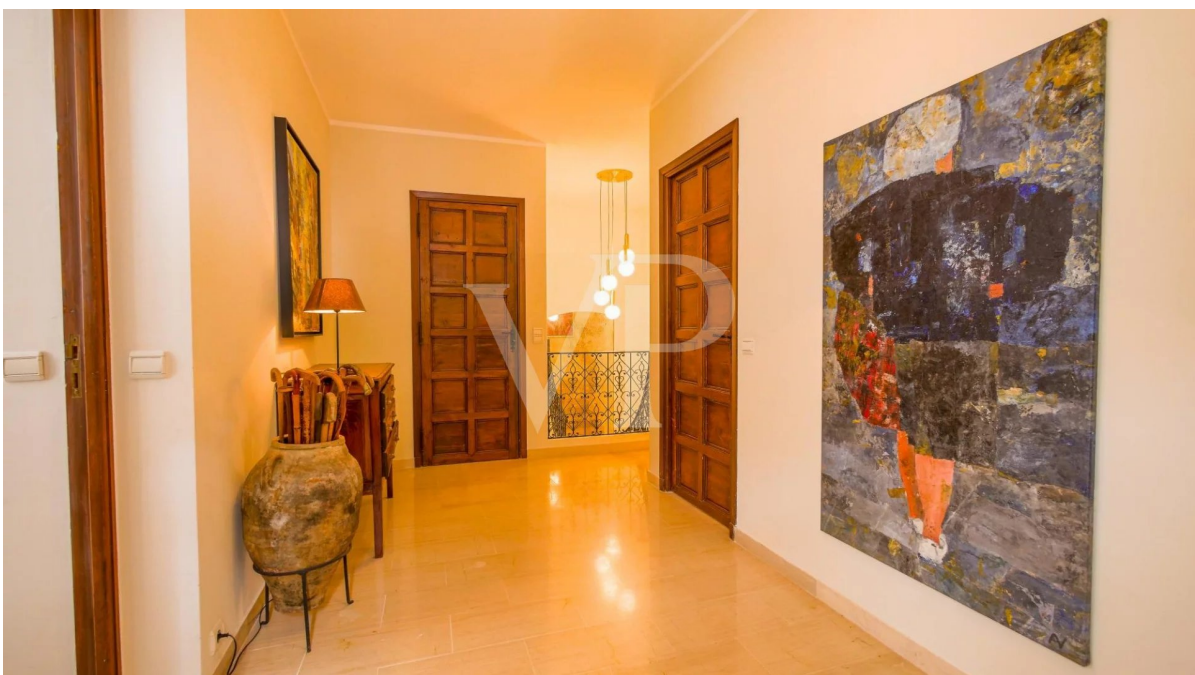
??????? ???????: 82511816 - 06140 Vence – Provence-Alpes-Côte d'Azur

?? ????????



??????? ????????: 82511816 - 06140 Vence – Provence-Alpes-Côte d'Azur

?? ????????



??????? ????????: 82511816 - 06140 Vence – Provence-Alpes-Côte d'Azur

??? ?????? ???????????

Majestic property with stunning panoramic views of the Riviera and the Mediterranean - from the Alps to the sea, from Monaco to the Bay of Cannes and the Esterel. Ideally located on a south facing hillside near the medieval village of Vence, and not far from Saint-Paul de Vence. With a livable surface of 670 sqm on two levels, the property comprises: a spacious and bright living room of 80 sqm with fireplace, a tower room, a spacious and modern kitchen of 45 sqm with dining area, a small appetizer kitchen, and separate dining room. The kitchen and dining room open up onto the terraces with an outdoor dining area under the olive trees. Large master bedroom with ensuite bathroom and tower room, 5 more bedrooms. All bedrooms with views of the Mediterranean. Surrounded by a lovely garden, planted with olive trees, and various covered and open terraces overlooking the Riviera. Large pool area with a covered terrace and BBQ. Spacious garage for several cars. Vence is situated in the Riviera hinterland at a few hundred meters above sea level. It is known for its artistic history, its museums and galleries of modern and experimental art. Both artists Henri Matisse and Marc Chagall have lived and were active in Vence. Information on the risks to which this property is exposed is available on the Géorisques website: www.georisques.gouv.fr

???????? ??????????: 82511816 - 06140 Vence – Provence-Alpes-Côte d'Azur

?????????????? ???????????????????

??? ?????????????????? ??????????????, ?????????????????? ?? ??? ?????????? ?????????????????? ???:

Martina Aniansson & Marc Sebastian Aniansson

76 Boulevard de la Croisette ??????
E-Mail: frenchriviera@von-poll.com

To Disclaimer of von Poll Immobilien GmbH

www.von-poll.com