

Jávea

# Luxury new build villa in Corona area, Javea/Xabia

????????? ??????????: NE1419V



???? ??????: 3.895.000 EUR • ??????????: ca. 438 m<sup>2</sup> • ??????????: 4

??????? ???????: NE1419V - 03730 Jávea

- ?? ??? ??????
- ?? ????????
- ??????????? ??????????
- ??? ?????? ??????????
- ??????????? ????????????????

???????? ??????????: NE1419V - 03730 Jávea

?? ??? ??????

???????? ??????????	NE1419V	????? ???????	3.895.000 EUR
????????????	ca. 438 m <sup>2</sup>	??????	?????
?????????????? ???	????????? ?? ?? ?????????	?????????? ???????	ca. 744 m <sup>2</sup>
????????	3	????????????????????	ca. 0 m <sup>2</sup>
????????	4	??????	
?????????????? ??? ??????????	4	????????	?????????, ???????
????????	5		
????? ?????????????	2025		

???????? ??????????: NE1419V - 03730 Jávea

?????????????? ????????????

??????????????????	0.00
??????????????	
????????	0.00 kWh/m <sup>2</sup> a
??????????????	
??????????????	

???????? ??????????: NE1419V - 03730 Jávea

?? ?????????



???????? ??????????: NE1419V - 03730 Jávea

?? ?????????



???????? ??????????: NE1419V - 03730 Jávea

?? ?????????



???????? ?????????: NE1419V - 03730 Jávea

?? ?????????





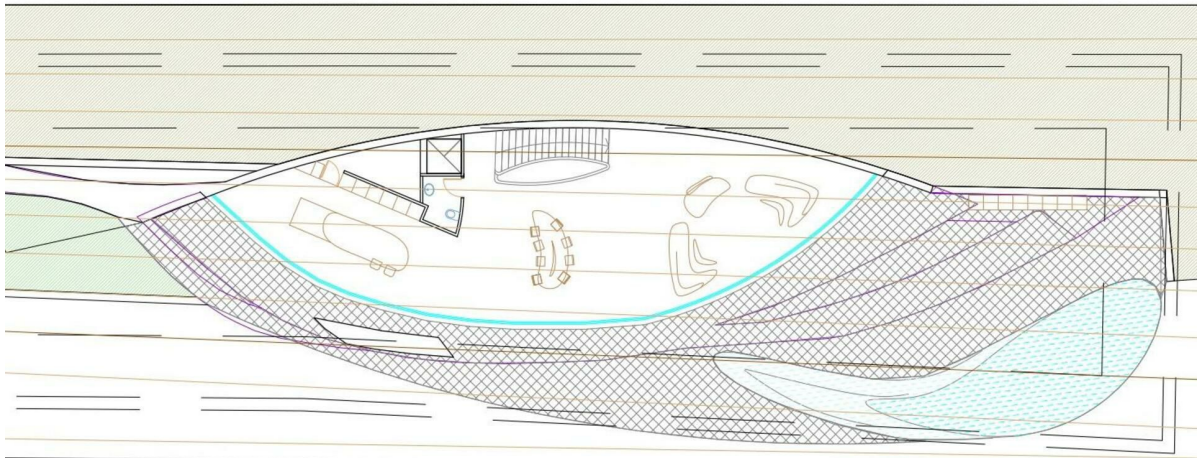
???????? ?????????: NE1419V - 03730 Jávea

?? ?????????



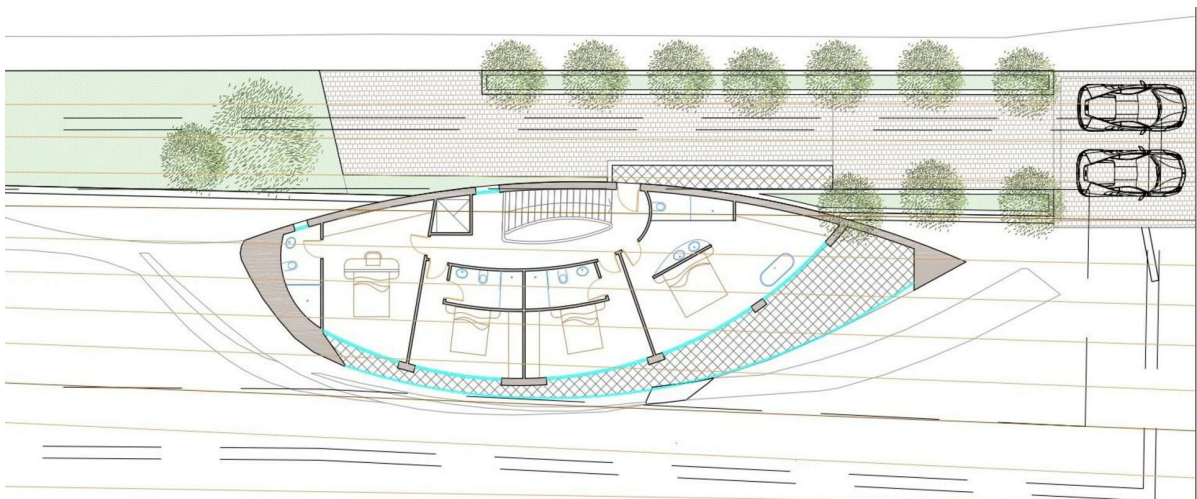
???????? ?????: NE1419V - 03730 Jávea

?? ????????



VON POLL REAL ESTATE  
Costa Blanca - Spain

PLANTA BAJA

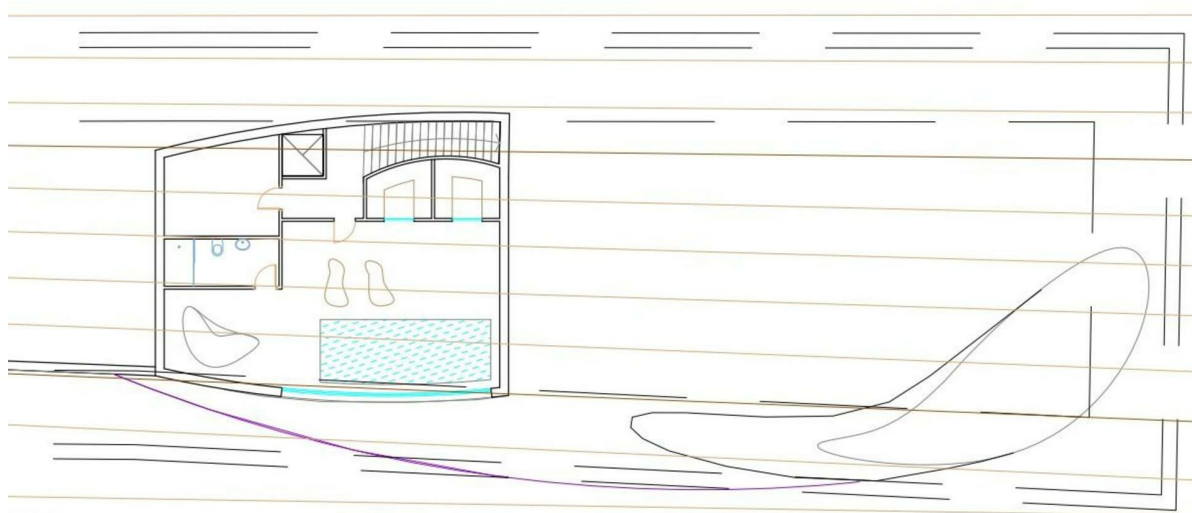


VON POLL REAL ESTATE  
Costa Blanca - Spain

PLANTA PRIMERA

???????? ?????????: NE1419V - 03730 Jávea

?? ?????????



VON POLL REAL ESTATE  
Costa Blanca - Spain

PLANTA SÓTANO

??????? ???????: NE1419V - 03730 Jávea

??? ?????? ???????????

Let us show you the most luxurious area of Costa Blanca, with this new build luxury villa project, commission free for the buyer by Von Poll Costa Blanca.

Located in Corona area of Javea/Xabia, offers panoramic views of the sea & the mountains, and close by to all the amenities to make your life as comfortable as possible.

Features:

Plot Size: 1.200 m<sup>2</sup> - Build Area interior and exterior: 743.60 m<sup>2</sup> - Build Area interior: 494.39 m<sup>2</sup> - Bedrooms: 4 - Bathrooms: 5 - Garage: for max 4 cars.

Main Floor: huge living room with open kitchen, guest toilet & breathtaking views and access to the main point of the house, the infinity swimming pool and terrace.

Upper Floor: 4 bedrooms and 4 bathrooms, all of them with sea views, one of them it's the master bedroom, with bath tube and shower plate.

Ground Floor: access to the gym, cinema, spa and garage of the house.

All the floor are connected with an elevator that makes your life in the house more comfortable and accessible.

Distance to amenities by 5 minutes by car.

Distance to Alicante Airport 1 hour driving distance.

Distance to Golf Club: 20 minutes by car.

Distance to Ibiza Ferry can be reached in 30 minutes drive in Denia.

Don't hesitate to contact us for more info, commission-free for the buyer with Von Poll Costa Blanca!

???????? ??????????: NE1419V - 03730 Jávea

????????????? ???????????????????

??? ??????????????? ??????????????, ??????????????? ?? ??? ?????????? ??????????????? ???:

Yohanne Pezham Goergens & Nicolai Jensen

---

Carrer Benidorm, 2 ?????? ??????????  
E-Mail: [calpe@von-poll.com](mailto:calpe@von-poll.com)

*To Disclaimer of von Poll Immobilien GmbH*

---

[www.von-poll.com](http://www.von-poll.com)