

Benidorm

# Apartments in Benidorms highest Building for sale

????????? ??????????: NE1405A



???? ??????: 1.170.000 EUR • ??????????: ca. 165 m<sup>2</sup> • ??????????: 3

???????? ??????????: NE1405A - 03502 Benidorm

- ?? ??? ??????
- ?? ??????????
- ?????????????? ????????????
- ??? ?????? ????????????
- ?????????????? ??????????????????

???????? ??????????: NE1405A - 03502 Benidorm

?? ??? ??????

???????? ??????????	NE1405A	????? ???????	1.170.000 EUR
????????????	ca. 165 m <sup>2</sup>	????????????	????????????
?????????????? ???	?????????? ?? ?? ?????????	?????????? ???????	ca. 175 m <sup>2</sup>
?????????	3	???????????????????? ???????	ca. 0 m <sup>2</sup>
?????????????? ??? ????????????	3	?????????	?????????
????????????	2		

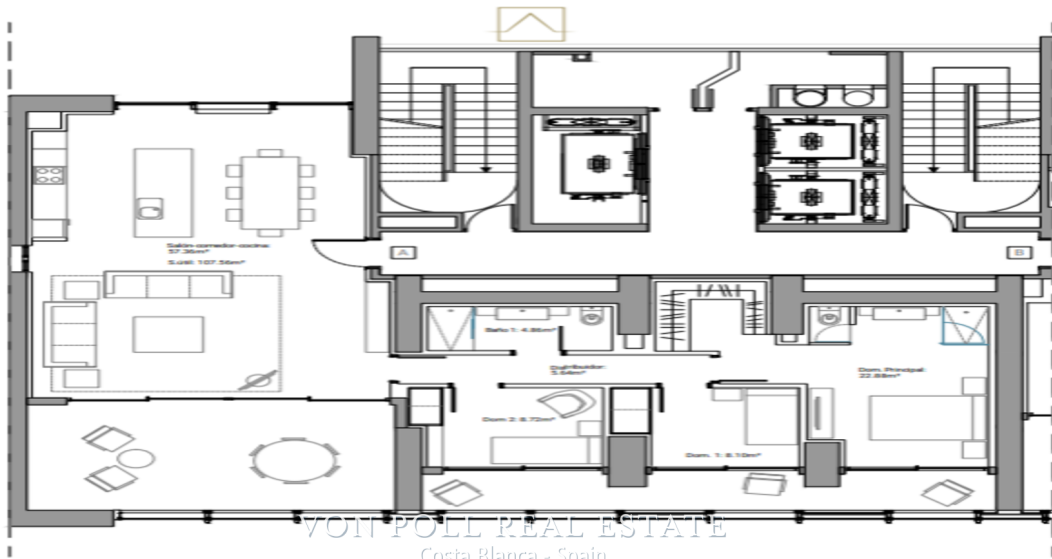
???????? ??????????: NE1405A - 03502 Benidorm

?????????????? ????????????

?????????? ??????????	?????????? ???????????	?????????????????? ??????????????	0.00
		???????? ?????????????? ??????????????	0.00 kWh/m <sup>2</sup> a

???????? ??: NE1405A - 03502 Benidorm

?? ????????



44A

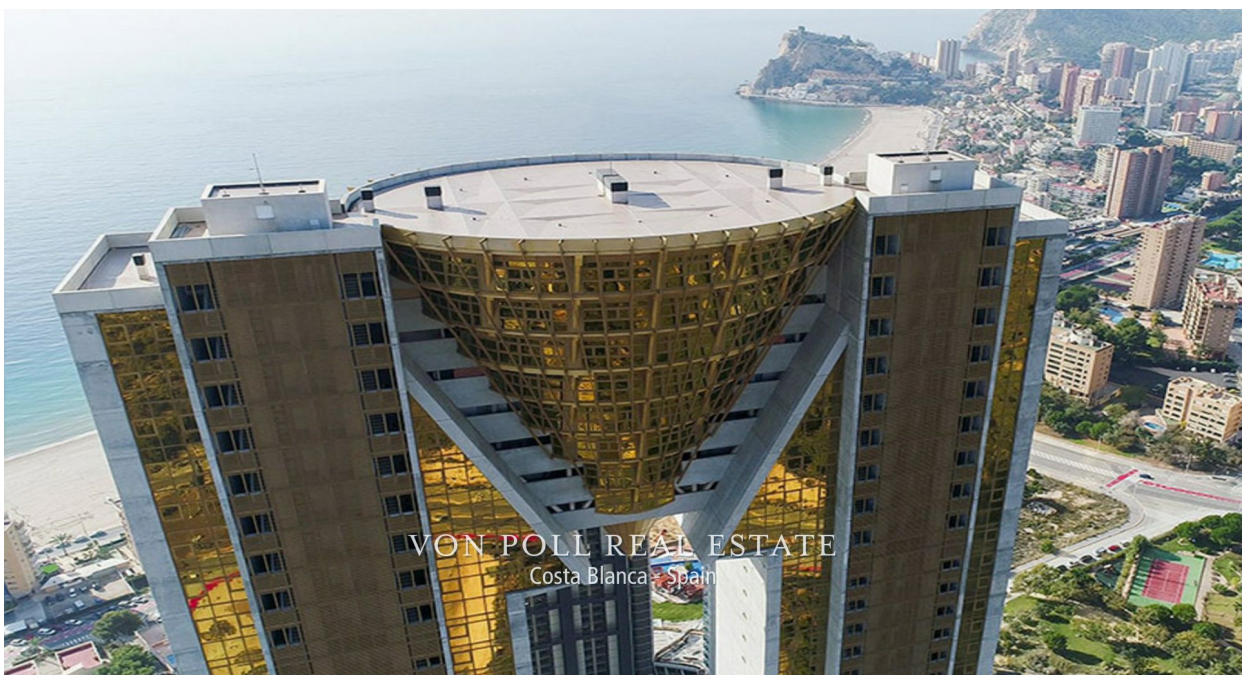
A2

SUP. CONSTRUIDA	175.26m <sup>2</sup>
SUP. UTE.	107.56m <sup>2</sup>
ESCALA	1:50



???????? ??????????: NE1405A - 03502 Benidorm

?? ????????



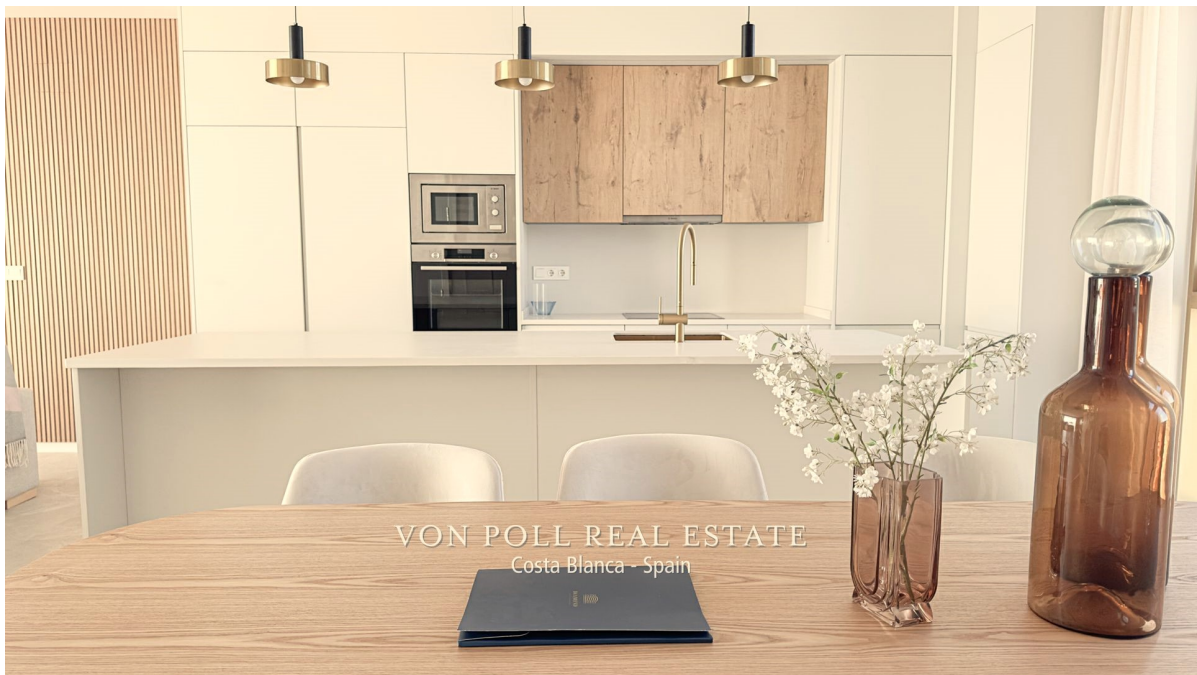
???????? ??????????: NE1405A - 03502 Benidorm

?? ????????



???????? ??????????: NE1405A - 03502 Benidorm

?? ?????????





???????? ?????????: NE1405A - 03502 Benidorm

?? ????????



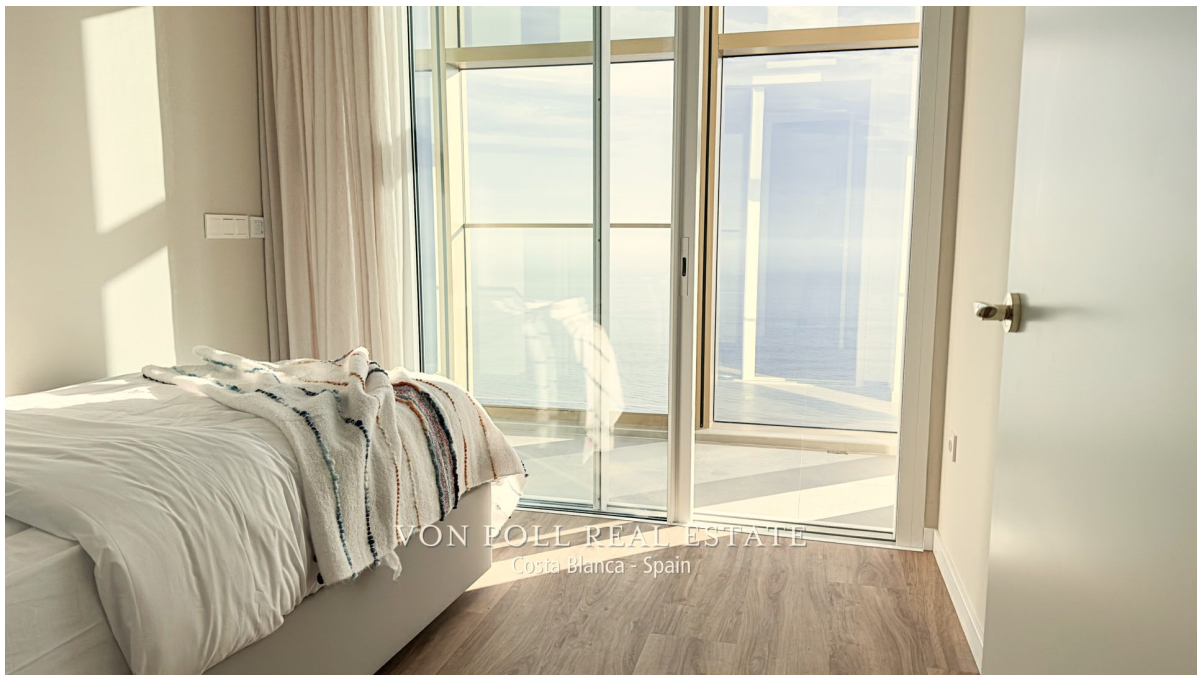
???????? ??????????: NE1405A - 03502 Benidorm

?? ?????????



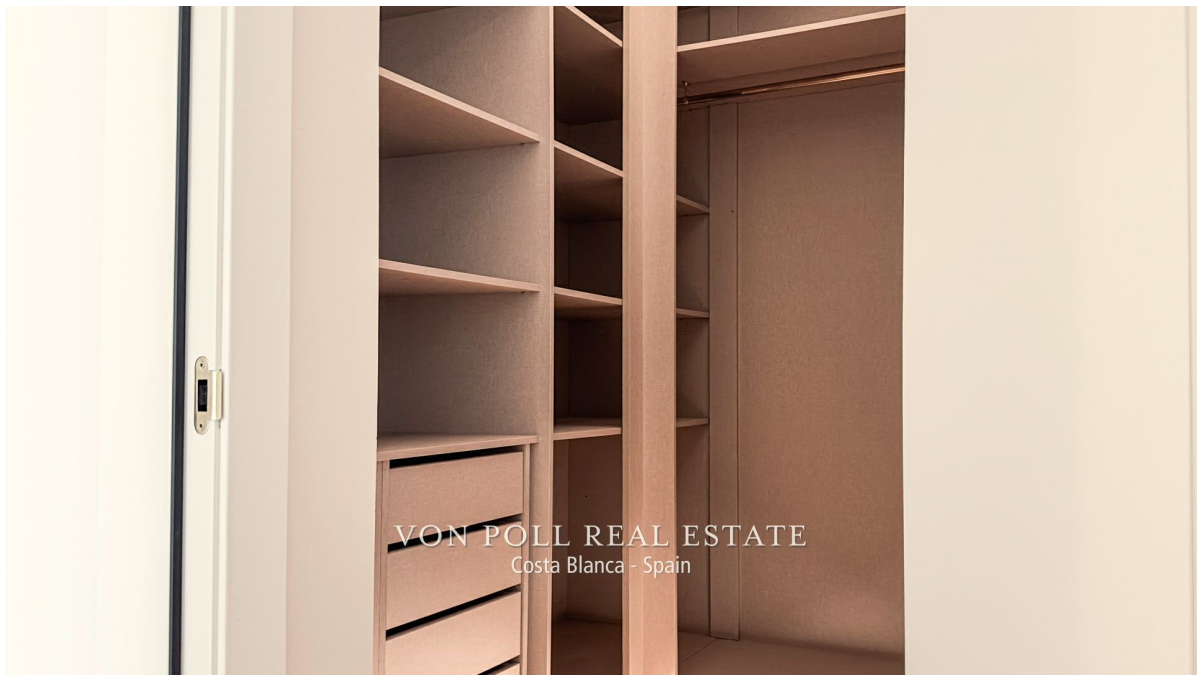
???????? ??????????: NE1405A - 03502 Benidorm

?? ?????????



???????? ??????????: NE1405A - 03502 Benidorm

?? ?????????



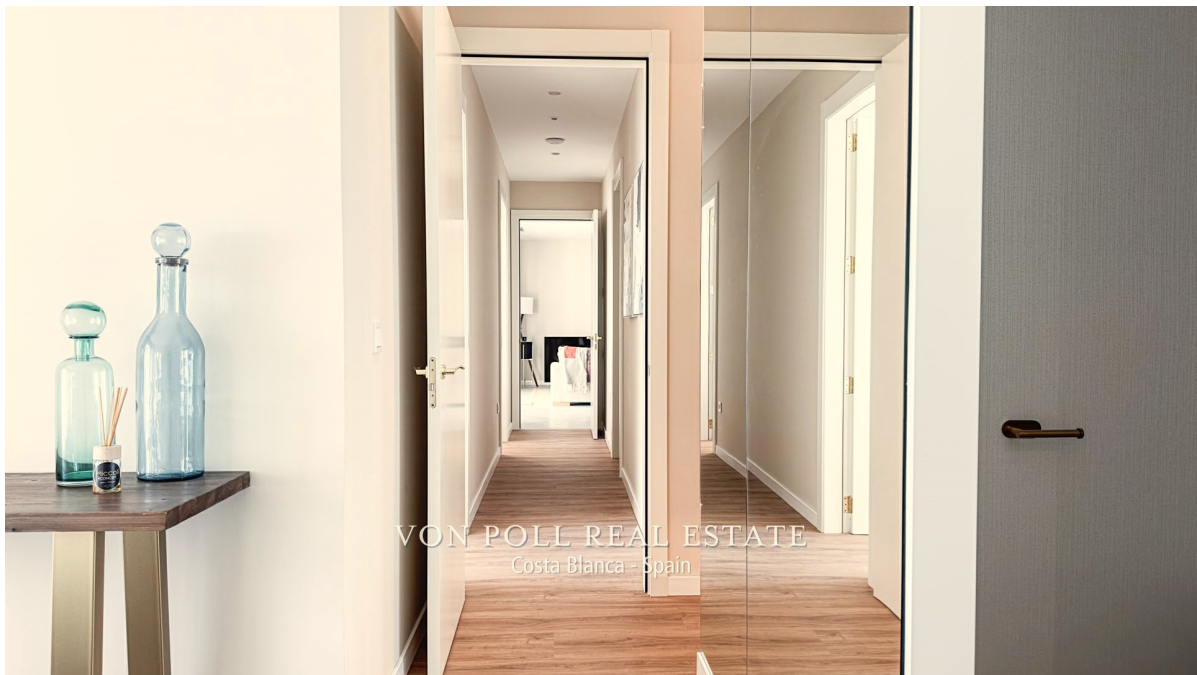
???????? ??????????: NE1405A - 03502 Benidorm

?? ?????????



???????? ??????????: NE1405A - 03502 Benidorm

?? ?????????



???????? ??????????: NE1405A - 03502 Benidorm

?? ????????



???????? ??????????: NE1405A - 03502 Benidorm

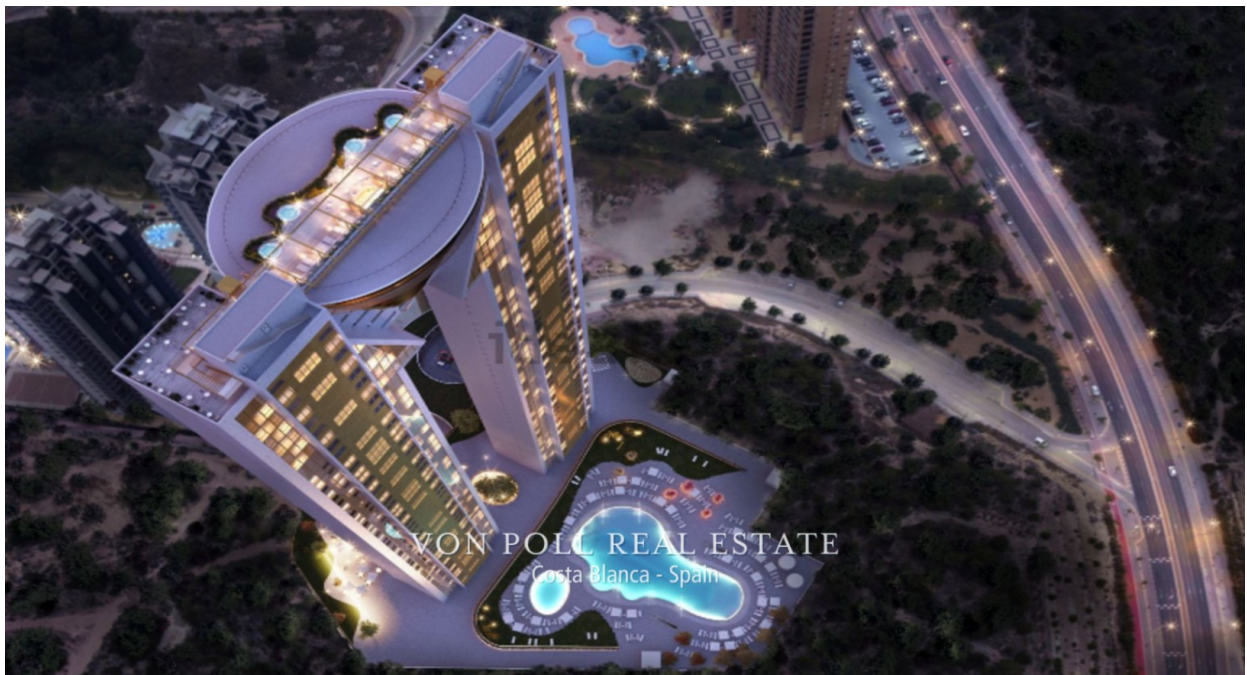
?? ????????





???????? ?????????: NE1405A - 03502 Benidorm

?? ?????????



??????? ???????: NE1405A - 03502 Benidorm

??? ?????? ???????????

<p> </p> <p>Characteristic</p> <p>Located on the 42nd floor of the iconic InTempo building, this apartment boasts breathtaking panoramic views of both the Mediterranean Sea and the mountainous surroundings that embrace the city of Alicante. Situated at an impressive height of 198 meters (200.2 meters including the roof towers), residents enjoy a unique perspective of the city's skyline.</p> <p>Features</p> <p>The apartment spans 165 square metres, providing ample space for residents to comfortably live and entertain. <br /> Three-bedroom, two-bathroom apartment is the epitome of modern luxury. Expansive windows flood the space with natural light, illuminating every detail of this contemporary retreat. Magnificent sea view !<br /> Residents have exclusive access to a range of amenities, including a private gym, fitness room, massage rooms, sauna and multiple Jacuzzis, providing a blend of relaxation and recreation.<br /> In addition to the private living space, residents can enjoy the 13,000 square metres of common areas within InTempo, such as three pools (including a massive 750 square metre pool), a 1,000 square metre children's play area and a rooftop wellness zone with an infinity pool.<br /> Extra services: Residents will benefit from additional services such as a physiotherapist, personal trainer, airport pick-up and rental management to enhance the overall living experience.</p> <p>Area:</p> <p>Airport Alicante 35 minutes drive<br /> Hospital 5 minutes drive<br /> Beach 50 meters<br /> theme parks and shopping centers 3 km<br /> Golf Course: The presence of the Sierra Cortina golf course is highlighted, making it a feature for golf enthusiasts. 10 minutes drive.</p> <p>Commission free for buyer!</p> <p>Von Poll Costa Blanca</p>

???????? ??????????: NE1405A - 03502 Benidorm

????????????? ??????????????????

?? ?????????????? ??????????????, ?????????????? ?? ?? ?????????? ?????????????? ???:

Yohanne Pezham Goergens & Nicolai Jensen

---

Carrer Benidorm, 2 ?????? ??????????  
E-Mail: [calpe@von-poll.com](mailto:calpe@von-poll.com)

*To Disclaimer of von Poll Immobilien GmbH*

---

[www.von-poll.com](http://www.von-poll.com)