

portimão

# T3 Olivie Condominium - Vale Lagar

????????? ??????????: LL069-5



???? ??????: 470.000 EUR • ??????????: ca. 160 m<sup>2</sup> • ?????????: 3

???????? ??????????: LL069-5 - 8501861 portimão

- ?? ??? ??????
- ?? ??????????
- ??? ?????? ???????????
- ?????????????? ??????????????????

???????? ??????????: LL069-5 - 8501861 portimão

?? ??? ??????

???????? ??????????	LL069-5	????? ???????	470.000 EUR
????????????	ca. 160 m <sup>2</sup>	????????????	????????????
????????	3	????????????????????	ca. 0 m <sup>2</sup>
???????????? ???	3	??????	
????????			
????????	2		

???????? ??????????: LL069-5 - 8501861 portimão

?? ?????????



???????? ??????????: LL069-5 - 8501861 portimão

?? ?????????



???????? ??????????: LL069-5 - 8501861 portimão

?? ?????????



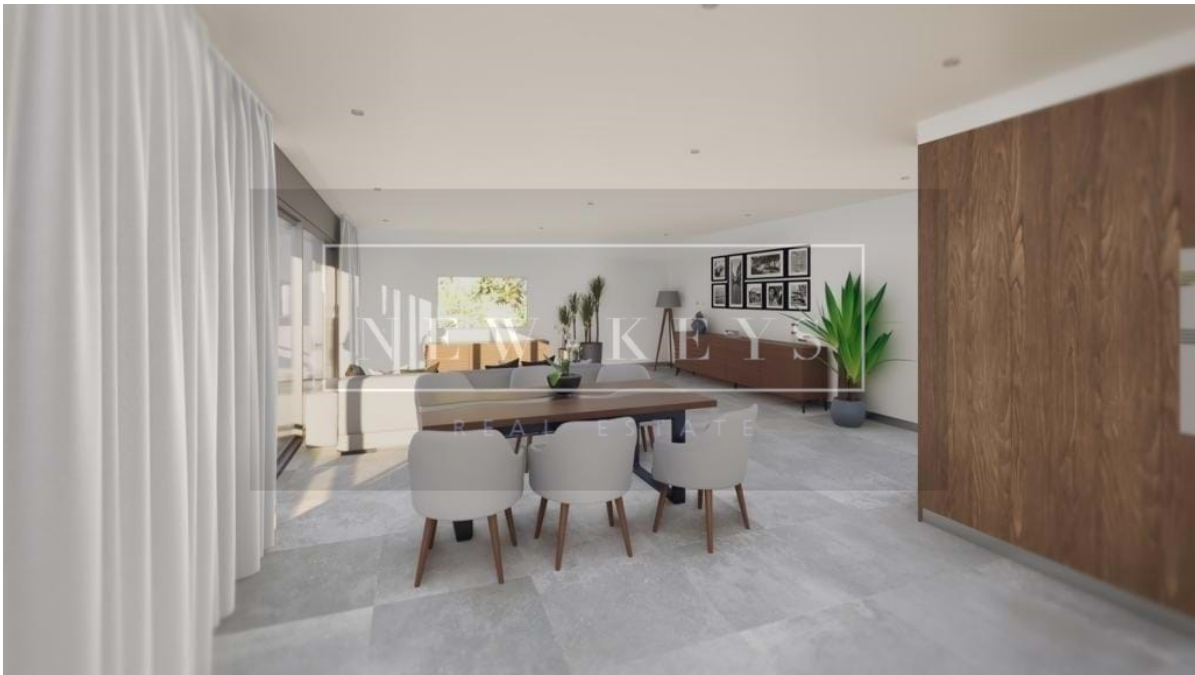
???????? ??????????: LL069-5 - 8501861 portimão

?? ?????????



???????? ??????????: LL069-5 - 8501861 portimão

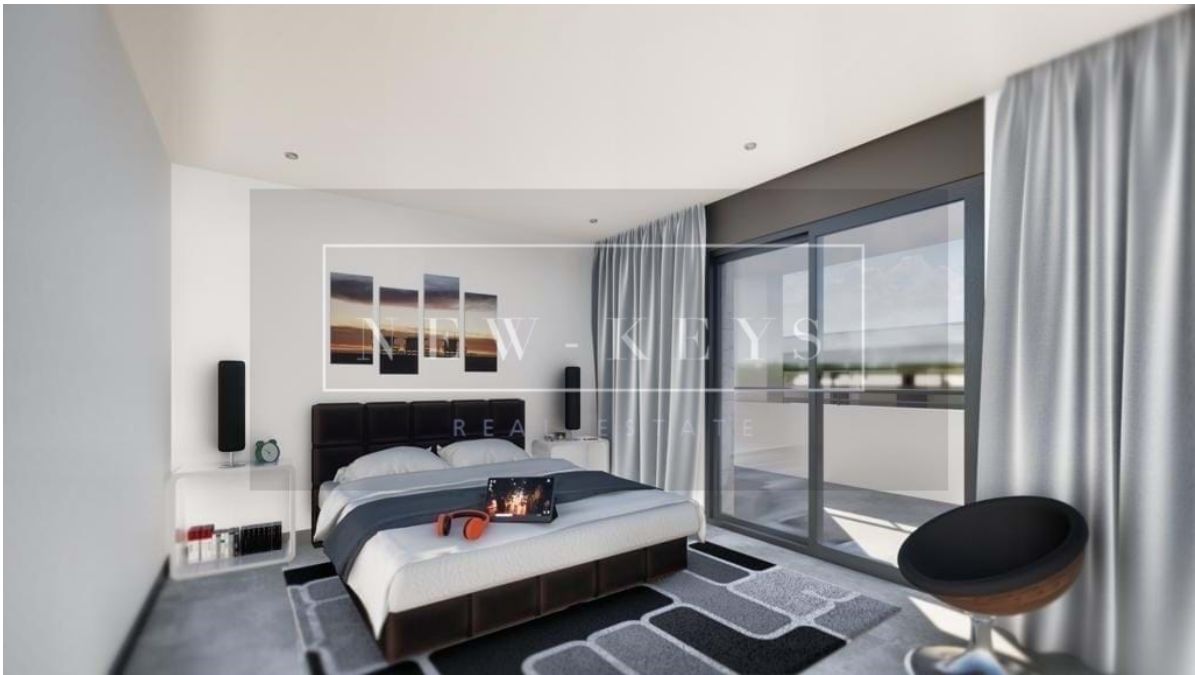
?? ?????????





??????? ???????: LL069-5 - 8501861 portimão

?? ????????



???????? ??????????: LL069-5 - 8501861 portimão

??? ?????? ???????????

Olivie Condominium is a modern and elegant development located in one of the most peaceful and consolidated areas of Portimão. Comprised of two buildings with eight apartments each, the condominium offers T2 and T3 units that combine contemporary architecture with high-quality finishes, typical of a renowned construction company in the Barlavento Algarvio region. The available T3 apartment in Olivie Condominium has a living area of 159.30 m<sup>2</sup>, a spacious balcony of 95,40m<sup>2</sup>, and 2 parking spaces. Equipped with Bosch appliances, Daikin air conditioning, electric underfloor heating, thermal cut windows, double glazing with solar and thermal protection, electric shutters, and a solar system for water heating, this apartment provides comfort and energy efficiency. The condominium also offers several leisure areas, such as a garden, a pool, and a gym, ensuring residents a healthy and enjoyable lifestyle. And with its strategic location just 5 minutes from the center of Portimão and the charming village of Alvor, and only 4 km from the entrance of the A22, Olivie Condominium is the perfect choice for both families and investors. Expected completion - December 2024

???????? ??????????: LL069-5 - 8501861 portimão

?????????????? ???????????????????

??? ????????????????? ??????????????, ????????????????? ?? ?? ?????????? ????????????????? ???:

---

- ??????

E-Mail: [lagos@von-poll.com](mailto:lagos@von-poll.com)

*To Disclaimer of von Poll Immobilien GmbH*

---

[www.von-poll.com](http://www.von-poll.com)