

Giuncarico – Toscana

Tuscany: Typical farmhouse with olive grove

???????? ?????: IT244151333



www.von-poll.it

???? ?????: 520.000 EUR • ?????: 6 • ????? ??: 750.000 m²

??????? ???????? IT244151333 - 58023 Giuncarico – Toscana

- ☐ ?? ??? ??????
- ☐ ?? ????????
- ☐ ???????????? ??????????
- ☐ ??? ?????? ??????????
- ☐ ???????????? ????????????????

??????? ?????????: IT244151333 - 58023 Giuncarico – Toscana

?? ??? ??????

???????? ?????????	IT244151333	???? ?????	520.000 EUR
???????????? ??	???????? ?? ?? ????????	?????	
????????	6	????????	subject to commission
?????????? ??	4	???????? ?????	ca. 200 m ²
????????		????????????????	ca. 0 m ²
????????	2	?????	

??????? ?????????: IT244151333 - 58023 Giuncarico – Toscana

????????????? ???????????

?????????????????
?????????????

BEDARF

??????? ???????? IT244151333 - 58023 Giuncarico – Toscana

?? ????????



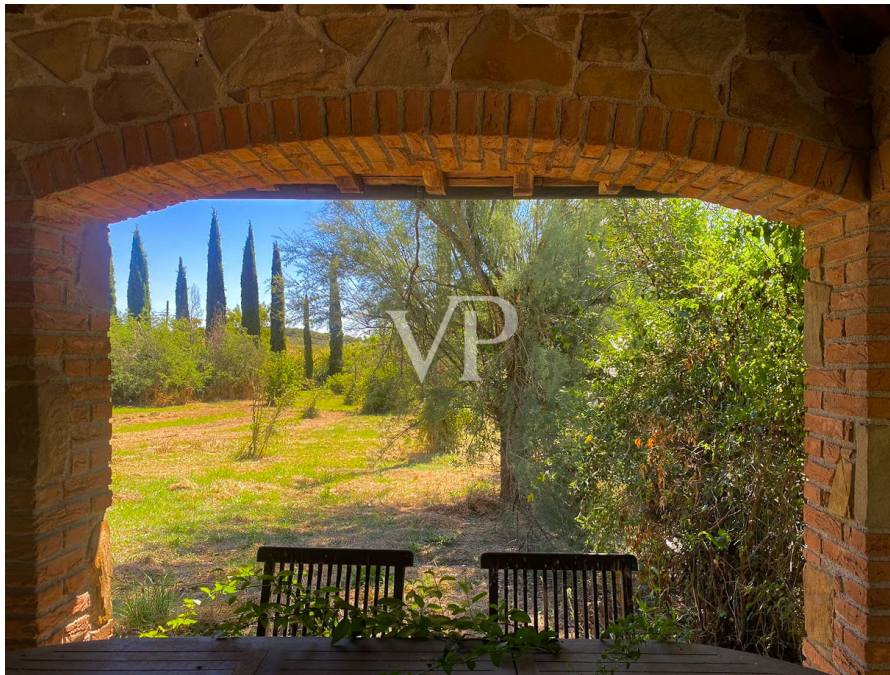
??????? ???????? IT244151333 - 58023 Giuncarico – Toscana

?? ????????



??????? ???????? IT244151333 - 58023 Giuncarico – Toscana

?? ????????



??????? ???????? IT244151333 - 58023 Giuncarico – Toscana

?? ????????



??????? ???????? IT244151333 - 58023 Giuncarico – Toscana

?? ????????



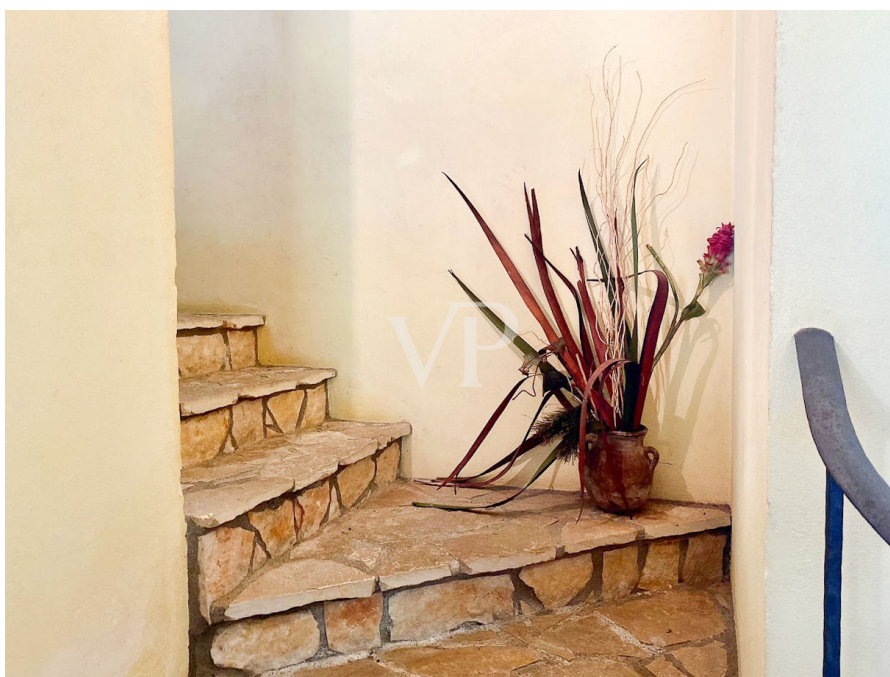
???????? ?????: IT244151333 - 58023 Giuncarico – Toscana

?? ????????



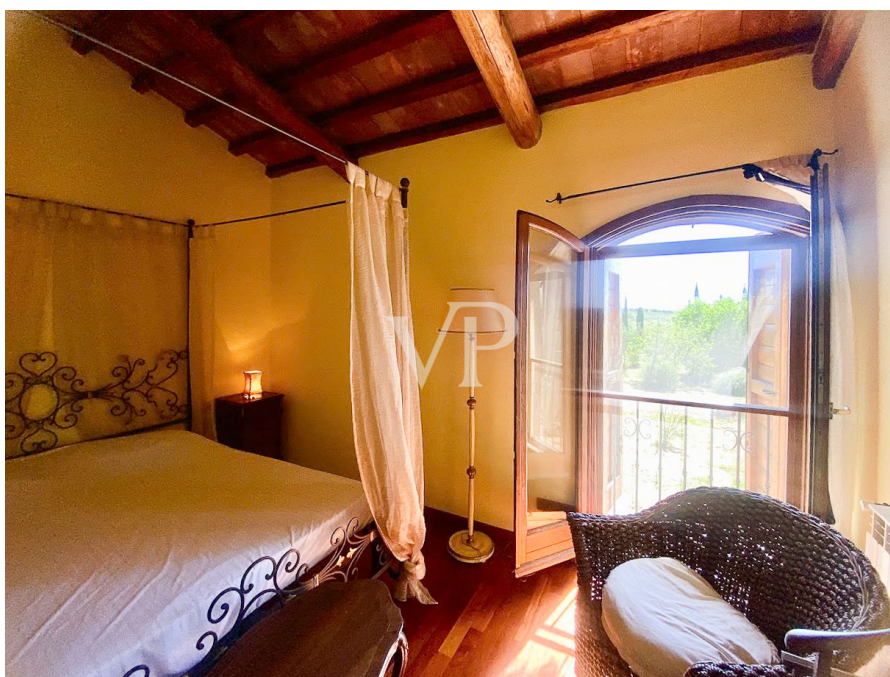
??????? ???????? IT244151333 - 58023 Giuncarico – Toscana

?? ????????



??????? ???????? IT244151333 - 58023 Giuncarico – Toscana

?? ????????



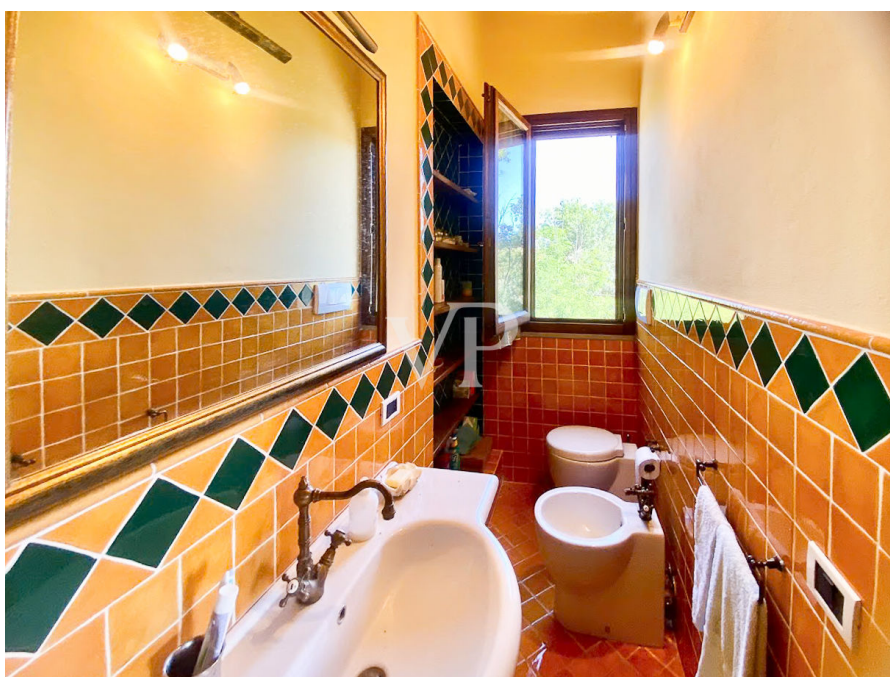
??????? ???????? IT244151333 - 58023 Giuncarico – Toscana

?? ????????



???????? ??????????: IT244151333 - 58023 Giuncarico – Toscana

?? ?????????



??????? ???????? IT244151333 - 58023 Giuncarico – Toscana

?? ????????



???????? ?????: IT244151333 - 58023 Giuncarico – Toscana

?? ????????



??????? ???????? IT244151333 - 58023 Giuncarico – Toscana

?? ????????



??????? ???????? IT244151333 - 58023 Giuncarico – Toscana

??? ?????? ?????????

The property is located between Giuncarico and Castiglioni della Pescaia, it is a 200 sq. m. property, distributed on two floors. On the ground floor is located that opens onto a large living room, with an open plan kitchen, this floor also houses a bathroom, providing convenience to the property. The internal staircase connects the ground floor to the second floor, where there are four double bedrooms. Two bathrooms complete the upper floor, one of which has a luxurious Jacuzzi tub. The farmhouse is surrounded by a lush garden of 2,000 square meters. The property further extends to 7.5 hectares of land. Part of the land is dedicated to the cultivation of olive trees, with as many as 400 plants. Within the property there is a working well to give water to the entire property. Adjacent to the farmhouse is an 80-square-meter outbuilding designed to house agricultural machinery and tools. This additional space is extremely practical for property management.

??????? ?????????: IT244151333 - 58023 Giuncarico – Toscana

????????????? ????????????????

??? ?????????????? ??????????????, ?????????????? ?? ??? ?????????? ?????????????? ???:

Christian Weissensteiner

Corso Italia 1 Milan
E-Mail: milano@von-poll.com

To Disclaimer of von Poll Immobilien GmbH

www.von-poll.com