

Bolzano – Südtirol [Trentino-Alto Adige]

## Elegant Duplex with terrace in prestigious area

???????? ?????: IT244151150



[www.von-poll.it](http://www.von-poll.it)

?????????: ca. 108 m<sup>2</sup> • ??????: 3

???????? ??????????: IT244151150 - 39100 Bolzano – Südtirol [Trentino-Alto Adige]

- ?? ??? ??????
- ?? ??????????
- ?????????????? ?????????????
- ????????? ?????????????
- ??? ????????? ?????????????
- ????????????????? ?????????????????????

???????? ??????????: IT244151150 - 39100 Bolzano – Südtirol [Trentino-Alto Adige]

?? ??? ??????

???????? ??????????	IT244151150
????????????	ca. 108 m <sup>2</sup>
?????????????? ???	?????????? ?? ?? ??????????
????????	1
????????	3
?????????????? ??? ????????????	2
????????????	2
????? ?????????????	1965

??????????????	????????
????????????	subject to commission
???????????? ???????	ca. 135 m <sup>2</sup>
???????????????????? ????????	ca. 0 m <sup>2</sup>
????????	?????????

???????? ??????????: IT244151150 - 39100 Bolzano – Südtirol [Trentino-Alto Adige]

?????????????? ???????????

???? ????????????

??????

---

???????? ??????????: IT244151150 - 39100 Bolzano – Südtirol [Trentino-Alto Adige]

?? ?????????



???????? ??????????: IT244151150 - 39100 Bolzano – Südtirol [Trentino-Alto Adige]

?? ????????



???????? ??????????: IT244151150 - 39100 Bolzano – Südtirol [Trentino-Alto Adige]

?? ?????????



???????? ??????????: IT244151150 - 39100 Bolzano – Südtirol [Trentino-Alto Adige]

?? ?????????





???????? ??????????: IT244151150 - 39100 Bolzano – Südtirol [Trentino-Alto Adige]

?? ?????????



???????? ??????????: IT244151150 - 39100 Bolzano – Südtirol [Trentino-Alto Adige]

?? ?????????



???????? ??????????: IT244151150 - 39100 Bolzano – Südtirol [Trentino-Alto Adige]

?? ?????????



???????? ??????????: IT244151150 - 39100 Bolzano – Südtirol [Trentino-Alto Adige]

?? ?????????



???????? ??????????: IT244151150 - 39100 Bolzano – Südtirol [Trentino-Alto Adige]

?? ?????????



???????? ??????????: IT244151150 - 39100 Bolzano – Südtirol [Trentino-Alto Adige]

?? ?????????



???????? ??????????: IT244151150 - 39100 Bolzano – Südtirol [Trentino-Alto Adige]

?? ?????????



???????? ??????????: IT244151150 - 39100 Bolzano – Südtirol [Trentino-Alto Adige]

?? ????????





???????? ??????????: IT244151150 - 39100 Bolzano – Südtirol [Trentino-Alto Adige]

?? ?????????



???????? ??????????: IT244151150 - 39100 Bolzano – Südtirol [Trentino-Alto Adige]

?? ?????????



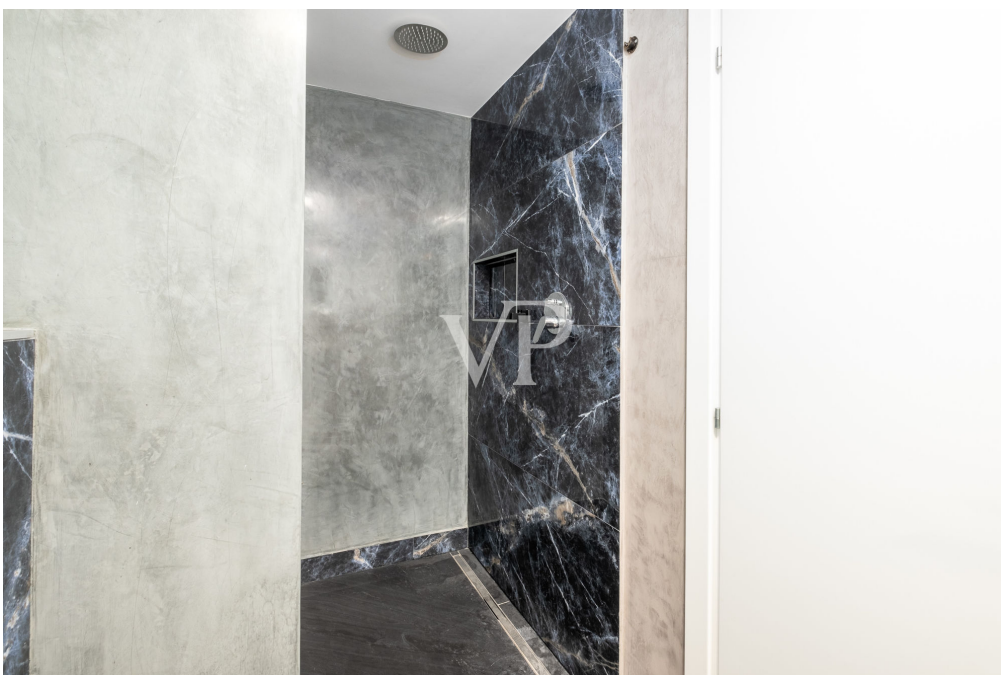
???????? ??????????: IT244151150 - 39100 Bolzano – Südtirol [Trentino-Alto Adige]

?? ?????????



???????? ??????????: IT244151150 - 39100 Bolzano – Südtirol [Trentino-Alto Adige]

?? ?????????



???????? ??????????: IT244151150 - 39100 Bolzano – Südtirol [Trentino-Alto Adige]

?? ?????????



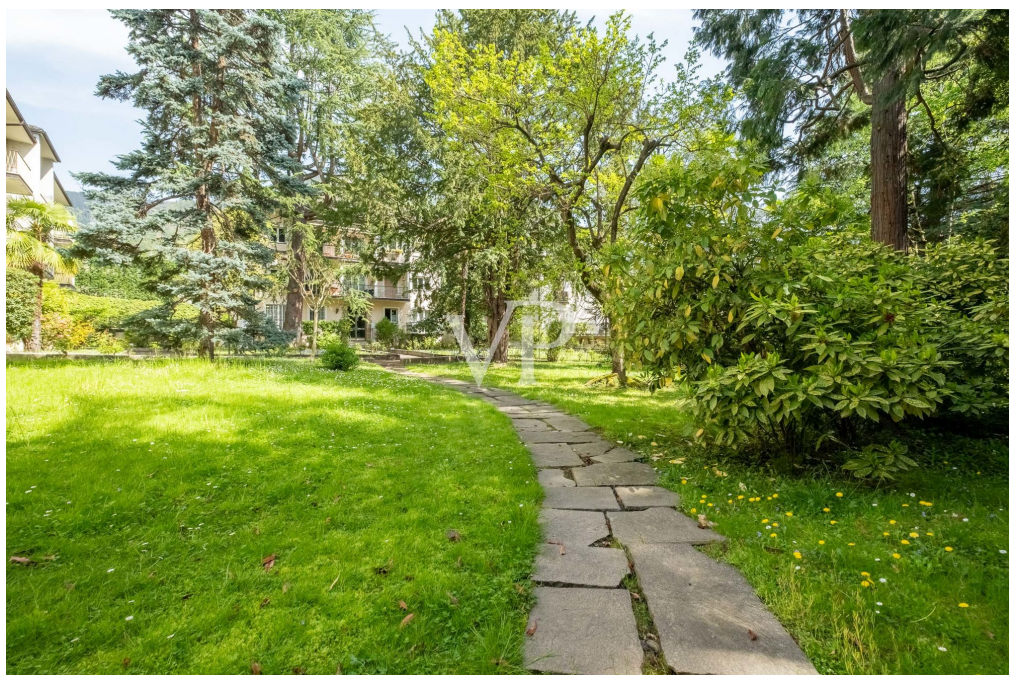
???????? ??????????: IT244151150 - 39100 Bolzano – Südtirol [Trentino-Alto Adige]

?? ?????????



???????? ??????????: IT244151150 - 39100 Bolzano – Südtirol [Trentino-Alto Adige]

?? ?????????

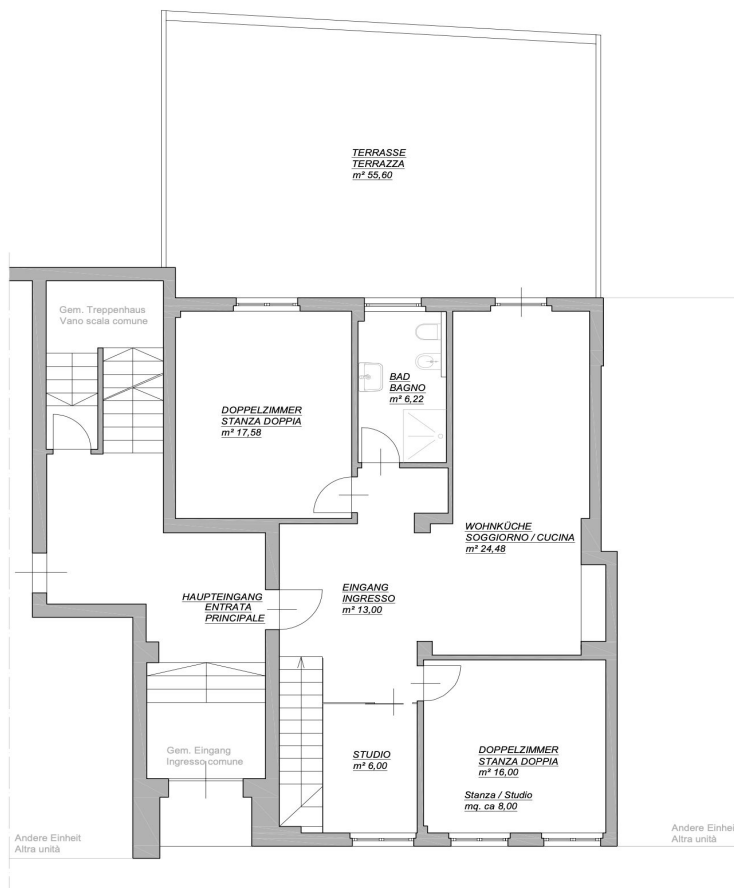


???????? ??: IT244151150 - 39100 Bolzano – Südtirol [Trentino-Alto Adige]

??????

Planimetria appartamento  
Stato di fattoVON POLL  
REAL ESTATE®

Orientamento





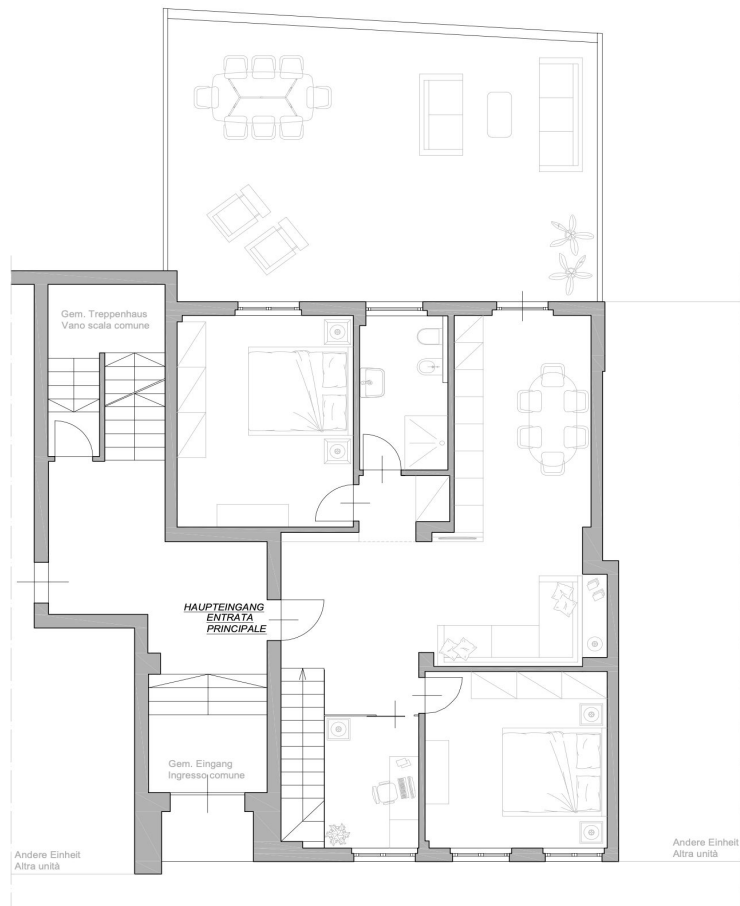
Planimetria appartamento  
Stato di fatto / distribuzione arredo



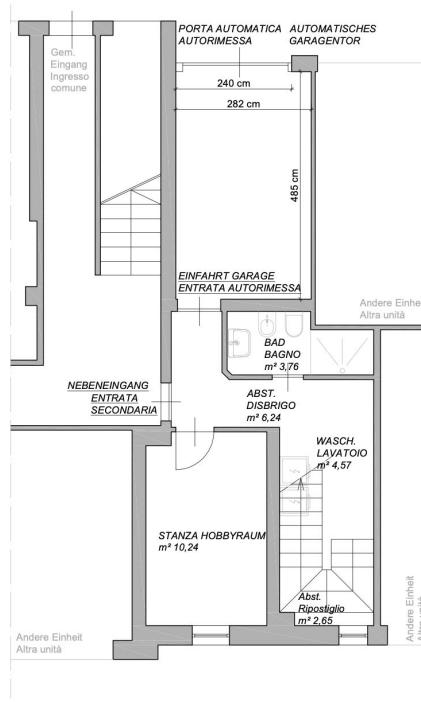
VON POLL  
REAL ESTATE®



Orientamento



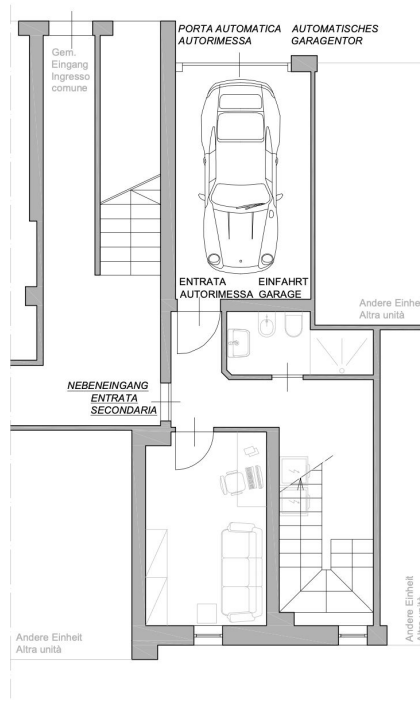
Planimetria appartamento  
Stato di fatto



Planimetria appartamento  
Stato di fatto / distribuzione arredo



Orientamento



???? ? ?????? ??? ?????? ?? ????????. ?? ??????? ???? ??????? ???? ???? ????????. ??? ??  
???? ?????, ??? ?????????? ?? ????????????? ???? ?????????? ???? ???????????????.

???????? ??????????: IT244151150 - 39100 Bolzano – Südtirol [Trentino-Alto Adige]

## ??? ?????? ????????????

This home is located in Gries, on Fago Street, one of the most prestigious areas of the city. Featuring high-quality finishes, including elegant Venetian stucco decorating the walls, the duplex apartment represents a charming abode. The recent renovation and expansion allowed for a harmonious connection of the two floors through a graceful staircase, while the garage offers convenient direct access to the dwelling. Located on the mezzanine floor of a building surrounded by a beautiful, carefully maintained garden, this the property offers tranquility and privacy. As soon as you cross the threshold, a bright and welcoming entrance hall leads to all areas of the house. After the living room, the living area extends to the kitchen, which overlooks a spacious 55-square-meter terrace. This terrace thanks to a beautiful natural setting is perfect for organizing outdoor dinners and lunches, as well as for spending moments of relaxation and fun in the company of family and friends. Also in the living area, the studio, with its glass walls, is harmoniously integrated, creating a great space to carry out work or creative activities from home. The two bedrooms are large and comfortable, furnished with king-size beds and large custom-made closets to ensure enough space for every need. The master bathroom is an oasis of luxury and comfort, equipped with a spacious "walk in" shower and an interactive mirror, adding a touch of modernity and functionality. Going downstairs, there is a convenient laundry room, a second full bathroom, and a versatile hobby room, which currently doubles as a guest room. This additional space offers multiple possibilities for use as a fitness area, additional study or ironing room easily adapting to personal needs. From this floor there is direct access to the garage through a door, adding an additional convenience. It means being able to enter the house directly from the car, making it easy to transfer luggage or expenses. The garage door is automatic, providing immediate access. In addition, this home is a "Smart Home," synonymous with intelligent living, where wireless connectivity and remote management come together to create a highly interconnected environment in perfect synthesis of advanced technology and ease of use.

???????? ??????????: IT244151150 - 39100 Bolzano – Südtirol [Trentino-Alto Adige]

?????????????? ???????????????????

??? ?????????????????? ??????????????, ?????????????????? ?? ??? ?????????? ?????????????????? ???:

Christian Weissensteiner

---

Drususallee 265/Viale Druso 265 Bozen / Bolzano  
E-Mail: [bozen@von-poll.com](mailto:bozen@von-poll.com)

*To Disclaimer of von Poll Immobilien GmbH*

---

[www.von-poll.com](http://www.von-poll.com)