

Palma

Luxury penthouse apartments with exceptional offer in Nou Levant

???????? ??????????: ES21379103_6.L



???? ??????: 2.460.000 EUR • ??????????: ca. 90 m² • ??????: 3

???????? ??????????: ES21379103_6.L - 07007 Palma

- ?? ??? ??????
- ?? ??????????
- ?????????????? ????????????
- ???????? ????????????
- ??? ??????? ????????????
- ?????????????????? ??? ????????????
- ?????????????????? ????????????????????

???????? ??????????: ES21379103_6.L - 07007 Palma

?? ??? ??????

???????? ??????????	ES21379103_6.L	????? ???????	2.460.000 EUR
?????????????	ca. 90 m ²	?????????????	???????
????????????? ???	????????? ?? ?? ?????????	?????????	???????
?????????	6	????????????????????	ca. 256 m ²
?????????	3	??????	
????????????? ??? ???????????	2	?????????	?????????, WC ?????????????, ????????, ??????, ????????????????? ?????????
?????????????	2		
????? ??????????????	2022		
?????? ??????????????	1 x ?????????? ???????????		

???????? ??????????: ES21379103_6.L - 07007 Palma

????????????? ???????????

???????????	?????????????
???????????	???????????
????? ????????????	?????? ??????????????
	????? / ??????

???????? ??????????: ES21379103_6.L - 07007 Palma

?? ?????????



???????? ??????????: ES21379103_6.L - 07007 Palma

?? ?????????



??????? ???????: ES21379103_6.L - 07007 Palma

?? ????????



??????? ???????: ES21379103_6.L - 07007 Palma

?? ????????



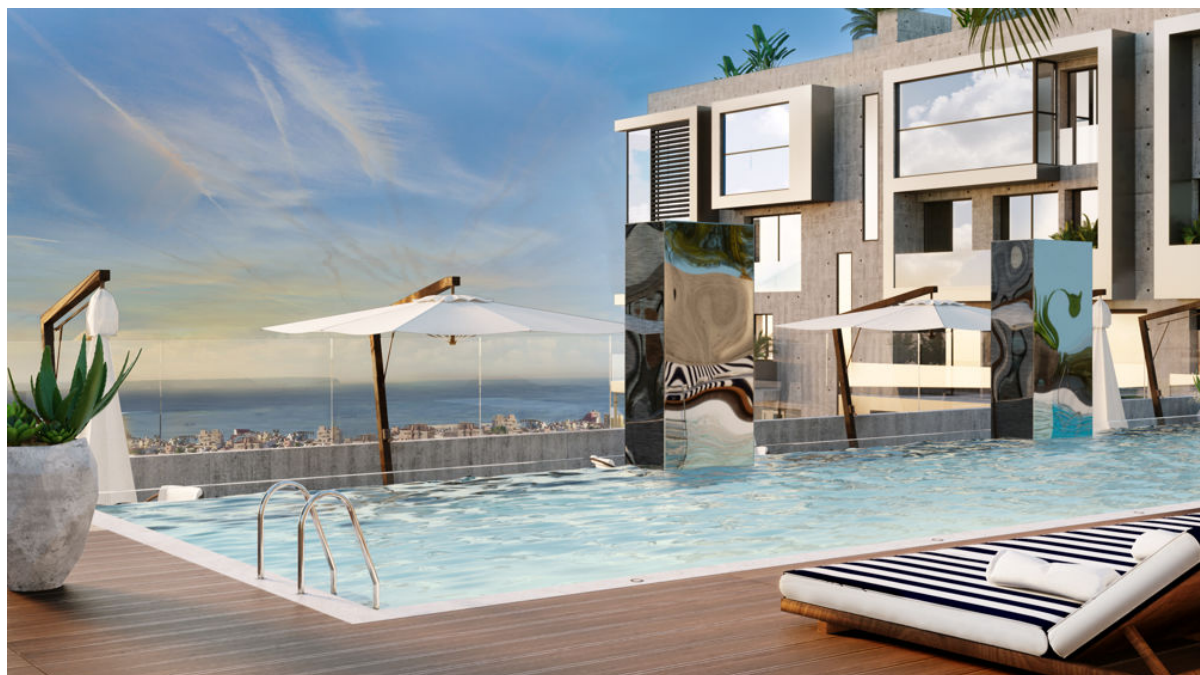
??????? ???????: ES21379103_6.L - 07007 Palma

?? ????????



??????? ???????: ES21379103_6.L - 07007 Palma

?? ????????



??????? ???????: ES21379103_6.L - 07007 Palma

?? ????????



???????? ??????????: ES21379103_6.L - 07007 Palma

?? ?????????



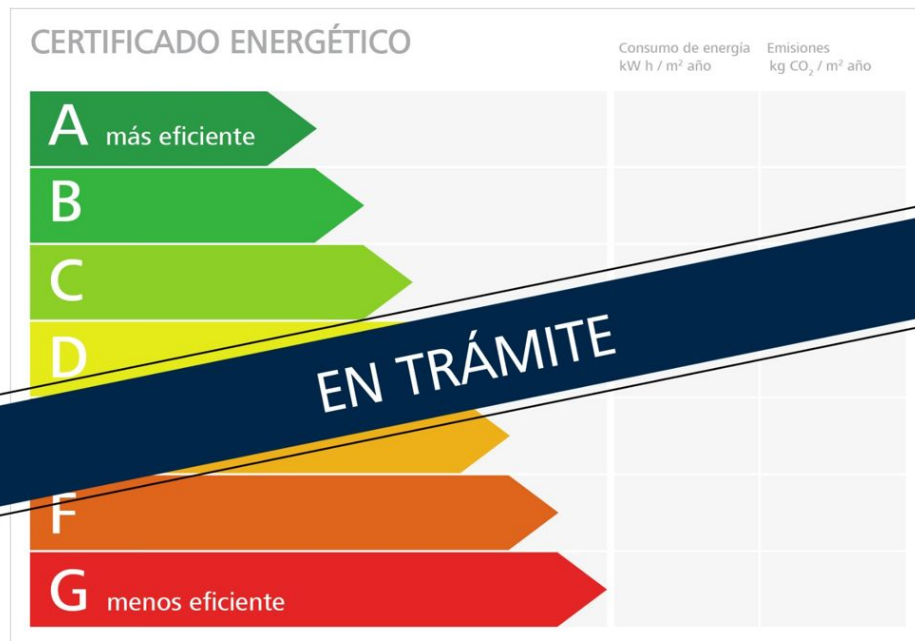
??????? ???????: ES21379103_6.L - 07007 Palma

?? ????????



???????? ??????????: ES21379103_6.L - 07007 Palma

?? ?????????



???????? ??????????: ES21379103_6.L - 07007 Palma

???????

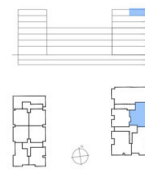
WITZHEN
 TÜRGRUPPEN
 SMART CONTROL
 PANORAMA-FENESTER
 SOLAR CONTROL GLASS
 COMMONITY POOL
 COMMONITY GYM
 SECURITY SYSTEM
 ART WALL
 BLINDS
 KLIMASYSTEM
 MOTORIZED WINDOWS

XO1 **cw**

0m 1m 2m 3m 4m

THESE PLANS ARE FOR INFORMATION ONLY AND NOT CONTRACTUAL. ALL THE RIGHTS ARE RESERVED BY THE ARCHITECT'S OFFICE.

XOJAY



APARTMENT 6.L	
INDOOR USABLE FLOOR AREA	90.96
INDOOR GROSS FLOOR AREA	102.76
TERRACE 1	16.18
TERRACE 2	16.61
POOL	1.98
GROSS FLOOR AREA	251.74
GFA + COMMON AREAS	256.38

ROOM	SURFACE
LIVING-DINING-KITCHEN	42.07
STAIRCASE	2.46
LAUNDRY	5.33
BEDROOM 1	17.97
BATHROOM 1	4.26
BEDROOM 2	10.86
BATHROOM 2	4.96

BUILDING	
LANDING	17.4
TOTAL USABLE FLOOR AREA	90.96

APARTMENT **6.L**

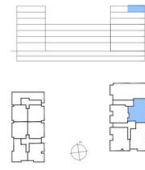
WITZHEN
 TÜRGRUPPEN
 SMART CONTROL
 PANORAMA-FENESTER
 SOLAR CONTROL GLASS
 COMMONITY POOL
 COMMONITY GYM
 SECURITY SYSTEM
 ART WALL
 BLINDS
 KLIMASYSTEM
 MOTORIZED WINDOWS

XO1 **cw**

0m 1m 2m 3m 4m

THESE PLANS ARE FOR INFORMATION ONLY AND NOT CONTRACTUAL. ALL THE RIGHTS ARE RESERVED BY THE ARCHITECT'S OFFICE.

XOJAY



APARTMENT 6.L	
INDOOR USABLE FLOOR AREA	90.96
INDOOR GROSS FLOOR AREA	102.76
TERRACE 1	16.18
TERRACE 2	16.61
POOL	1.98
GROSS FLOOR AREA	251.74
GFA + COMMON AREAS	256.38

ROOM	SURFACE
LIVING-DINING-KITCHEN	42.07
STAIRCASE	2.46
LAUNDRY	5.33
BEDROOM 1	17.97
BATHROOM 1	4.26
BEDROOM 2	10.86
BATHROOM 2	4.96

BUILDING	
LANDING	17.4
TOTAL USABLE FLOOR AREA	90.96

APARTMENT **6.LR**

???? ? ?????? ??? ?????? ?? ??????????. ?? ?????????? ??? ?????????? ??? ??? ??????????. ??? ??
 ????? ?????, ??? ?????????? ?? ?????????????? ??? ?????????? ??? ??????????????.

??????? ???????: ES21379103_6.L - 07007 Palma

??? ?????? ???????????

If you are looking for something special and luxurious in the immediate vicinity of the sea in a fantastic Mediterranean city, you will find it. Luxury apartments with an exceptional offer are for sale. The complex with a total of 84 apartments is located in the up-and-coming location Nou Levant. The layout and layout of the apartments maximise natural light through floor-to-ceiling glass walls that open onto elegant private balconies, providing residents with an outdoor living area to enjoy Palma's mild climate. The striking indoor-outdoor concept creates open plan living spaces with panoramic electric windows and integrated outdoor living areas, along with beautiful roof terraces and gardens. There are three lines to choose from, creating unique properties with an individual feel, using the highest quality materials. The modern, individually designed and fully equipped kitchens with high quality Miele brand electrical appliances are not only for dining, but also for family life and entertaining. Bathrooms feature built-in or freestanding baths and advanced appliances and fixtures. They meet the highest standards and offer a blend of practicality and impeccable style. The penthouses have a spectacular private roof terrace with pool or Jacuzzi and barbecue area with ground planting, designed for privacy and overlooking charming Portixol. The communal outdoor deck offers a place to lounge or swim in an exceptional pool. There are also elegant sun loungers available. A place to relax and unwind is available. With the finest private amenities available exclusively to residents, surrounding an inviting multi-level garden lounge with palm trees, vegetation, overhead lights and fire pits. A true urban oasis. Equipped with sauna and steam room, showers and changing rooms. The fitness area is equipped with state-of-the-art fitness equipment. The XO Lounge offers spaces to live, work and enjoy. The common areas have been carefully designed with comfort and convenience in mind to meet the leisure and business needs of residents in a relaxed atmosphere, complemented by excellent facilities and services. A virtual tour is available for this property.

???????? ??????????: ES21379103_6.L - 07007 Palma

????????????????? ??? ???? ?????

- Ceramic tiles GUBI cloud 120x120cm
- Underfloor heating
- Shadow joints (skirting boards)
- Suspended ceiling
- Interior doors: 1-leaf frameless passage door - Inverse Portaro
- intercom system
- Electrical installation
- Electric blinds
- Power sockets/ USB connections
- Intercom system
- Swimming Pool
- Double glazed windows
- Fitted kitchen
- Terrace with
- Municipal water supply
- Municipal electricity supply

???????? ??????????: ES21379103_6.L - 07007 Palma

????????????? ??????????????????

??? ????????????????? ??????????????, ????????????????? ?? ??? ?????????? ????????????????? ???:

Philip Bornewasser

Ronda Migjorn, 145B ?????????? - Lluçmajor
E-Mail: llucmajor@von-poll.com

To Disclaimer of von Poll Immobilien GmbH

www.von-poll.com