

Adeje – Callao Salvaje

Impressive design villa in Callao Salvaje

????????? ??????????: ES223183852



www.von-poll.com

???? ??????: 1.838.000 EUR • ??????????: ca. 239,41 m² • ??????: 6 • ?????? ????: 305 m²

??????? ?????????: ES223183852 - 38678 Adeje – Callao Salvaje

- ?? ??? ??????
- ?? ????????
- ?????? ??????????
- ??? ?????? ??????????
- ???????????????? ??? ??????????
- ??? ??? ??? ????????????
- ?????? ??????????????
- ?????????????? ????????????????

??????? ??????????: ES223183852 - 38678 Adeje – Callao Salvaje

?? ??? ??????

???????? ??????????	ES223183852	????? ???????	1.838.000 EUR
????????????	ca. 239,41 m²	?????	?????
????????????? ???	????????? ?? ?? ?????????	????????????????????	ca. 0 m²
?????????	6	????????	?????????, WC
????????????? ??? ?????????	3		?????????????, ???????
??????????	4		
????? ?????????????	2024		
?????? ?????????????	2 x ??????????? ????????? ??????????????		

??????? ??????: ES223183852 - 38678 Adeje – Callao Salvaje

?? ???????



??????? ??????: ES223183852 - 38678 Adeje – Callao Salvaje

?? ???????



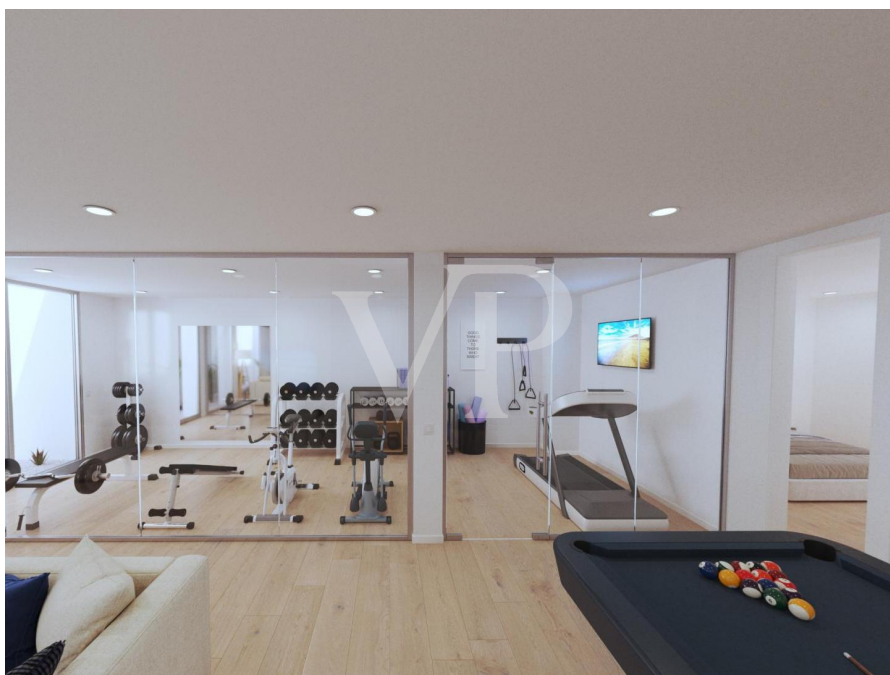
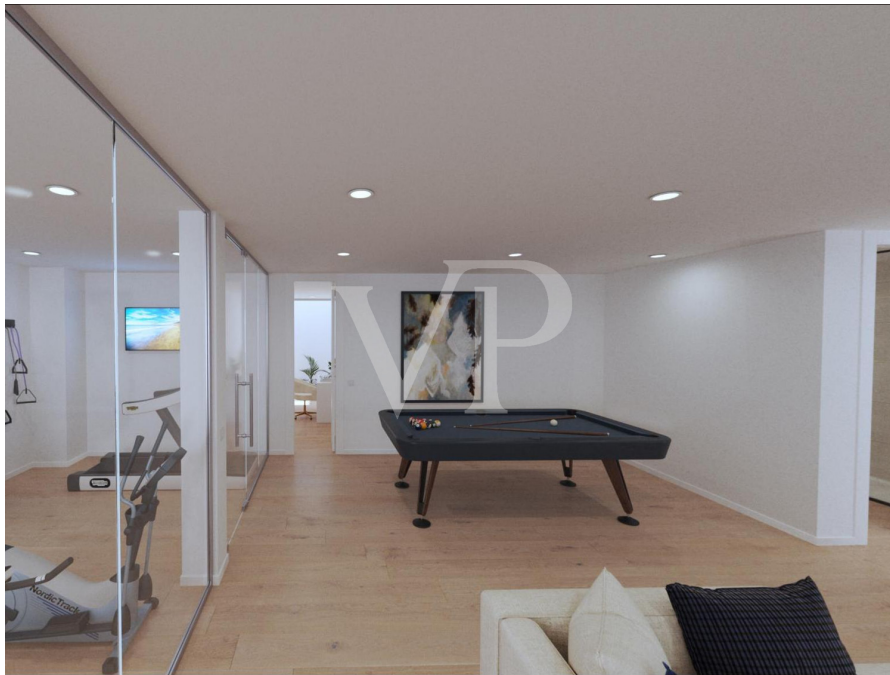
???????? ?????????: ES223183852 - 38678 Adeje – Callao Salvaje

?? ?????????



??????? ???????? : ES223183852 - 38678 Adeje – Callao Salvaje

?? ????????



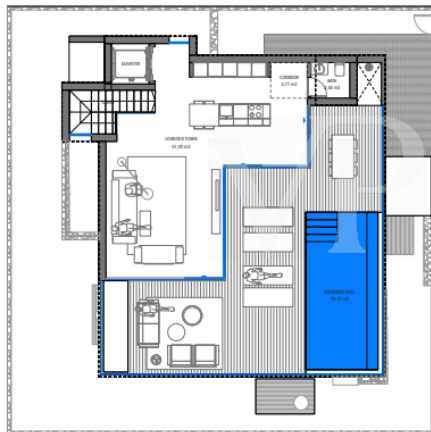
???????? ?????????: ES223183852 - 38678 Adeje – Callao Salvaje

?? ?????????

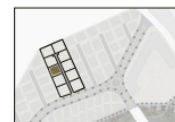


??????? ???????? ES223183852 - 38678 Adeje – Callao Salvaje

??????

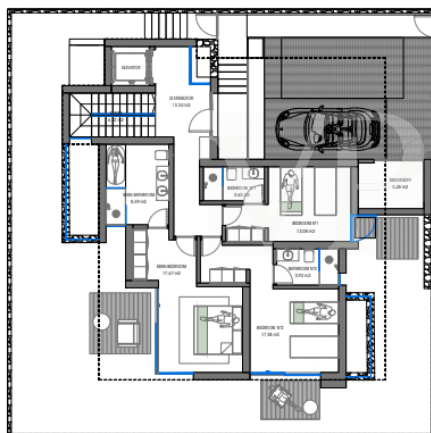
Plot 34
First floor

S Y B A R I S

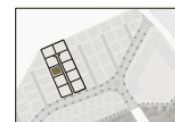


Plot 34	
Plot area:	305.30 m²
Build area:	238.61 m²
Usable area:	239.41 m²
First floor:	56.22 m²
Terrace surface:	58.41 m²
Pool surface:	19.12 m²

This information is indicative and may be modified for technical, legal, aesthetic or commercial reasons. Please note that both the surfaces and the structure may undergo certain alterations as a result of design and/or legal adaptations.
The layout of the furniture is indicative.

Plot 34
Ground floor

S Y B A R I S

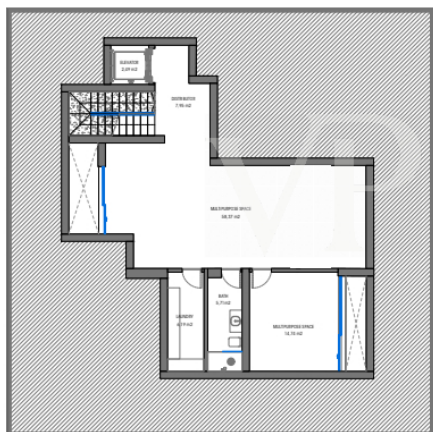


Plot 34	
Plot area:	305.30 m²
Build area:	238.61 m²
Usable area:	239.41 m²
Ground floor:	89.41 m²
Garden usable area:	103.34 m²

This information is indicative and may be modified for technical, legal, aesthetic or commercial reasons. Please note that both the surfaces and the structure may undergo certain alterations as a result of design and/or legal adaptations.
The layout of the furniture is indicative.

Plot 34

Basement

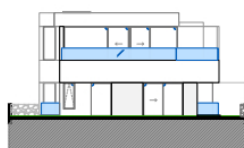
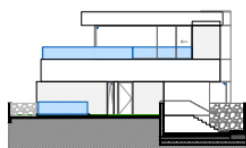
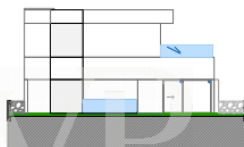
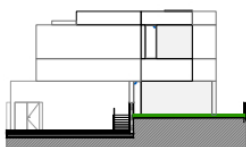
**S Y B A R I S****Plot 34**

Plot area:	305.30 m ²
Build area:	238.61 m ²
Usable area:	239.41 m ²
Basement area:	93.78 m ²

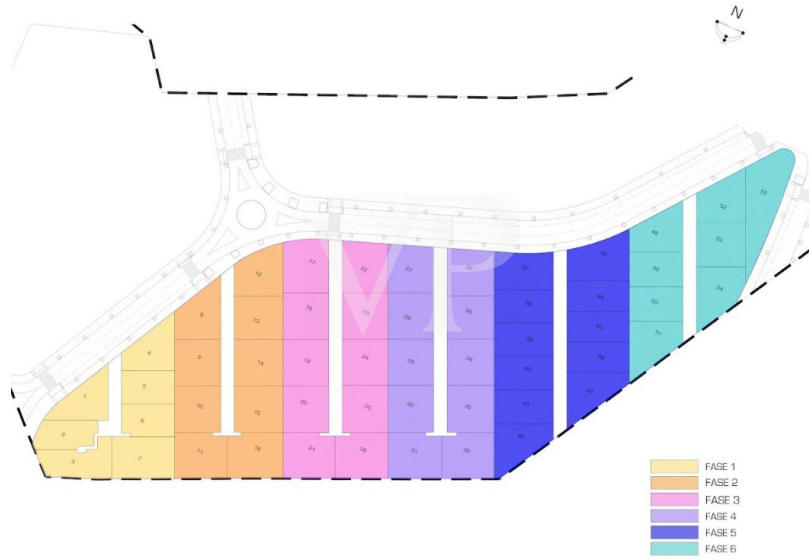
This information is indicative and may be modified for technical, legal, aesthetic or commercial reasons. Please note that both the surfaces and the structure may undergo certain alterations as a result of design and/or legal adaptations.
The layout of the furniture is indicative.

Plot 34

Elevations

**S Y B A R I S**

This information is indicative and may be modified for technical, legal, aesthetic or commercial reasons. Please note that both the surfaces and the structure may undergo certain alterations as a result of design and/or legal adaptations.
The layout of the furniture is indicative.



???? ? ?????? ??? ?????? ?? ????????. ?? ??????? ???? ??????? ???? ???? ??????. ??? ??
???? ?????, ??? ?????????? ?? ??????????? ???? ????????? ???? ???????????.

??????? ?????????: ES223183852 - 38678 Adeje – Callao Salvaje

??? ?????? ??????????

Sybaris is a new build project of 55 luxury villas, located on a residential plot on the seafront in Rokabella. These villas offer the latest in technology, minimalist design and sea views. The property is distributed over three floors, connected by stairs and an elevator, with private parking, Split hot/cold air conditioning and a heated infinity pool on the upper floor. The basement floor has natural light thanks to a large window. There we find a large recreation room and a additional room, a laundry room and a bathroom. The ground floor offers a private parking with direct access to the main entrance, three large bedrooms, all with en-suite bathrooms and a private terrace which leads to the garden area. A utility room completes this floor. The upper floor offers a guest toilet, a fully equipped kitchen and a spacious living room with direct access to the large terrace, with an incredible infinity pool. From there you can enjoy fantastic views of the sea, to the La Gomera and the beautiful mountains. It is an ideal property to life in but also interesting as an investment!

???????? ??????????: ES223183852 - 38678 Adeje – Callao Salvaje

???????????????? ???? ??????????

- Villa Sybaris Golden Model
- Plot: 305,30 m²
- Built meters: 291.61 m²
- 3 bedrooms with en-suite bathrooms
- Bathrooms: 4 in total + 2 guest toilets
- Split Air Conditioning Hot/Cold
- Kitchen fully equipped
- Private Lift
- Heated pool (19.12 m²) with shower
- Private parking for 2 cars
- Multipurpose room with English patio
- Fully equipped laundry room, storage and sink
- Blinds in living room and bedrooms
- Domotics system
- Water purification system

??????? ???????? : ES223183852 - 38678 Adeje – Callao Salvaje

??? ??? ??? ???????????

Callao Salvaje is located on the southwest coast of Tenerife, belongs to the municipality of Adeje and is one of the places on the island with the most days of sunshine per year. There you will find a variety of shops, cafes, bars, restaurants and a volcanic sand beach. The charming town is a good and convenient starting point for many activities, such as hiking, cycling, surfing, diving, golf or horse riding. From here you can reach the national park and Pico del Teide by car in about 50 minutes. Also the area of ??Costa Adeje, with the famous "Playa del Duque" and the beaches of Playa de Las Américas can be reached in a few minutes by car. The south airport is approx. 25 minutes by car and the north airport about 50 minutes.

??????? ?????????: ES223183852 - 38678 Adeje – Callao Salvaje

????? ??????????????

RESPONSIBILITY: We would like to point out that the property information, documents, plans and information that we transmit, come from the seller or owner. Therefore, we are not responsible for the accuracy or completeness of the information in general. All real estate offers are without obligation and subject to possible advertising errors. OUR SERVICE FOR YOU AS THE OWNER: If you are planning to sell your property, it is important for you to know its market value. Let one of our real estate specialists professionally analyze the current value of your property free of charge and without obligation. Our international network enables us to bring sellers or landlords and interested parties together in the best possible way.

???????? ??????????: ES223183852 - 38678 Adeje – Callao Salvaje

????????????? ????????????????

??? ?????????????? ??????????????, ?????????????? ?? ??? ?????????? ?????????????? ???:

Caroline Müller

Avda Chayofita 18, C.C. Parque Santiago 6, Local 24 Teneriffa Süd

E-Mail: tenerife.south@von-poll.com

To Disclaimer of von Poll Immobilien GmbH

www.von-poll.com