

Amsterdam

# Alexanderkade 3-2

???????? ?????: NL24185515



???? ?????: 2.300.000 EUR • ??????: ca. 207 m<sup>2</sup> • ??????: 7

???????? ??????????: NL24185515 - 1018 CH Amsterdam

- ?? ??? ??????
- ?? ??????????
- ??? ?????? ???????????
- ?????????????????? ??? ???????????
- ??? ??? ??? ??????????????
- ?????? ??????????????????
- ?????????????????? ???????????????????

???????? ??????????: NL24185515 - 1018 CH Amsterdam

?? ??? ???????

???????? ??????????	NL24185515	????? ???????	2.300.000 EUR
????????????	ca. 207 m <sup>2</sup>	????????????	????????????
????????	7		
???????????? ???	3		
????????			
????????	2		
????? ?????????????	1888		

???????? ??: NL24185515 - 1018 CH Amsterdam

?? ????????



???????? ?????????: NL24185515 - 1018 CH Amsterdam

?? ?????????



???????? ??????????: NL24185515 - 1018 CH Amsterdam

?? ?????????



???????? ????????: NL24185515 - 1018 CH Amsterdam

?? ????????



???????? ??????????: NL24185515 - 1018 CH Amsterdam

?? ?????????





???????? ?????: NL24185515 - 1018 CH Amsterdam

?? ????????



???????? ?????: NL24185515 - 1018 CH Amsterdam

?? ????????



???????? ????????: NL24185515 - 1018 CH Amsterdam

?? ????????



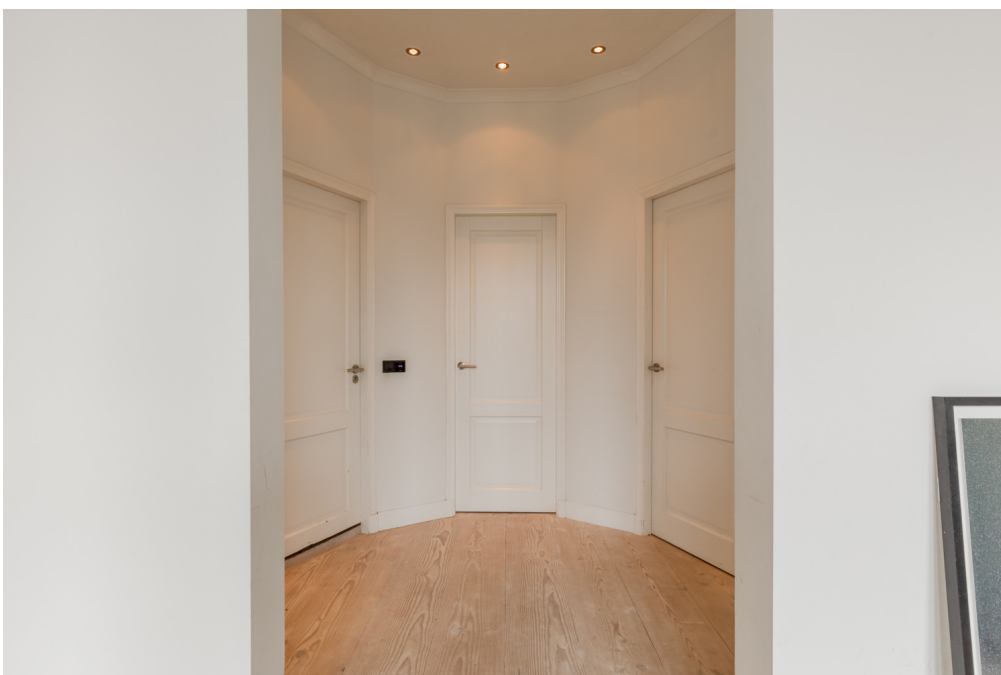
???????? ?????: NL24185515 - 1018 CH Amsterdam

?? ????????



????????? ??????????: NL24185515 - 1018 CH Amsterdam

?? ??????????



???????? ?????: NL24185515 - 1018 CH Amsterdam

?? ????????



???????? ??????????: NL24185515 - 1018 CH Amsterdam

?? ?????????



???????? ????????: NL24185515 - 1018 CH Amsterdam

?? ????????





???????? ?????: NL24185515 - 1018 CH Amsterdam

?? ????????



???????? ?????: NL24185515 - 1018 CH Amsterdam

?? ????????



???????? ????????: NL24185515 - 1018 CH Amsterdam

?? ????????



???????? ????????: NL24185515 - 1018 CH Amsterdam

?? ????????



???????? ?????: NL24185515 - 1018 CH Amsterdam

?? ????????



???????? ?????: NL24185515 - 1018 CH Amsterdam

?? ????????



???????? ??????????: NL24185515 - 1018 CH Amsterdam

?? ?????????



???????? ??????????: NL24185515 - 1018 CH Amsterdam

?? ?????????





???????? ?????: NL24185515 - 1018 CH Amsterdam

?? ????????



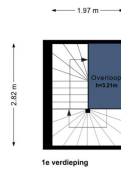
???????? ?????: NL24185515 - 1018 CH Amsterdam

?? ????????



???????? ?????????: NL24185515 - 1018 CH Amsterdam

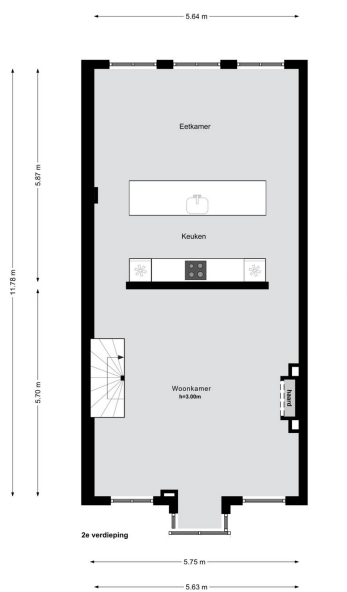
?? ?????????



\* Deze plattegrond is een indicatieve afbeelding. Het is geen technische tekening.  
Aan de plattegrond kunnen geen rechten worden ontleend.

Koningsgracht 321  
1015 JE Amsterdam  
020 215 99 88

Claude Debuinghjan 134  
1082 RD Amsterdam  
020 215 99 88



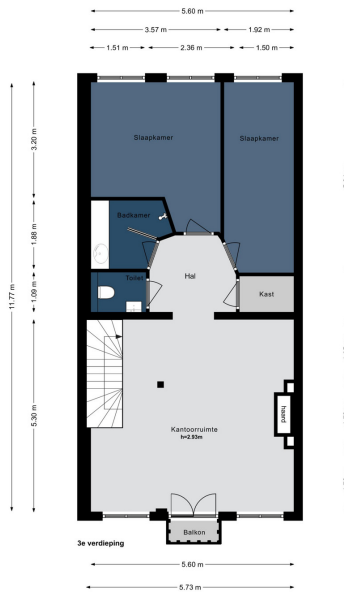
\* Deze plattegrond is een indicatieve afbeelding. Het is geen technische tekening.  
Aan de plattegrond kunnen geen rechten worden ontleend.

Koningsgracht 321  
1015 JE Amsterdam  
020 215 99 88

Claude Debuinghjan 134  
1082 RD Amsterdam  
020 215 99 88

???????? ????????: NL24185515 - 1018 CH Amsterdam

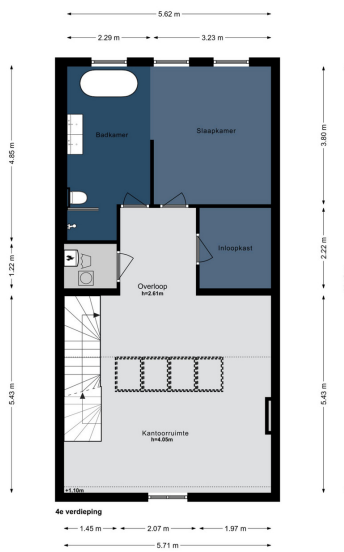
?? ????????



**VP** VON POLL  
REAL ESTATE®

\* Deze plattegrond is een indicatieve afbeelding die niet overeenkomstig is met de kadastrale tekening. Aan alle plattegronden kunnen geen rechten worden ontleend.

Kenningsnr. 321 1018 CH Amsterdam 020 215 99 88  
Claude Debuschplan 134 1082 ND Amsterdam 020 215 99 88



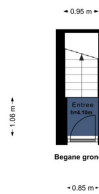
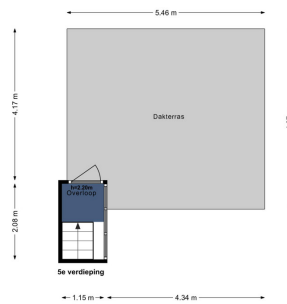
**VP** VON POLL  
REAL ESTATE®

\* Deze plattegrond is een indicatieve afbeelding die niet overeenkomstig is met de kadastrale tekening. Aan alle plattegronden kunnen geen rechten worden ontleend.

Kenningsnr. 321 1018 CH Amsterdam 020 215 99 88  
Claude Debuschplan 134 1082 ND Amsterdam 020 215 99 88

????????? ??????????: NL24185515 - 1018 CH Amsterdam

?? ??????????



???????? ??????????: NL24185515 - 1018 CH Amsterdam

??? ?????? ???????????

Very light triple upper house of 207 m2 with roof terrace of 26 m2 located in the Plantagebuurt The apartment is located in a beautiful building from 1888 on freehold land and the foundation was renovated in 2002. From the apartment you have a beautiful view of the Singelgracht and the Tropenmuseum on every floor. There are 3 bedrooms, 2 bathrooms, a spacious kitchen, 2 spacious living rooms and a beautiful multifunctional room with an impressive roof construction.

??????? ???????: NL24185515 - 1018 CH Amsterdam

???????????????? ???? ??????????

### Layout

The house is located on the 2nd, 3rd and 4th floor of a stately mansion. Entrance on the ground floor, via the private stairs to the 2nd floor. At the front there is a bright and spacious living room with a fireplace and bay window with a view over the Singelgracht and the Tropenmuseum. At the rear is the modern kitchen with all kinds of built-in appliances. One floor higher, there is a second living room at the front with a fireplace, high windows and double doors to a balcony. At the rear are 2 neat bedrooms, a bathroom with walk-in shower, a separate toilet and a storage cupboard. The 4th floor is characterized by a beautiful characteristic roof construction. Here is a bright multifunctional space at the front. At the rear is the luxurious master bedroom with semi-open bathroom with bath, walk-in shower, toilet and double sink. Here is also the walk-in closet and a utility room. From this floor a staircase goes to the roof terrace of approximately 25 m2 with beautiful panoramic views.

???????? ??????????: NL24185515 - 1018 CH Amsterdam

??? ??? ??? ????????????

Location The apartment is located on a dead-end - and therefore traffic-free - part of the Alexanderkade, with the wide Singelgracht in front of the door. Opposite the Tropenmuseum and a stone's throw from Artis zoo and the Oosterpark. Parking in front of the door is no problem here. Public transport and a wide variety of shopping and catering facilities are also within walking distance.



???????? ??????????: NL24185515 - 1018 CH Amsterdam

?????? ??????????????????

Features -Apartment -Year of construction 1888 -Freehold land - Three floors -Usable floor area of 207m2 -Roof terrace of 26m2 with water and electricity -Foundation renewed in 2002 - Entrance on the ground floor -Double glazing -Small V.v.E. with 2 members - Delivery in consultation -Monument

???????? ??????????: NL24185515 - 1018 CH Amsterdam

?????????????? ???????????????????

??? ?????????????????? ??????????????, ?????????????????? ?? ??? ?????????? ?????????????????? ???:

Joan Dik, Marie Christine Lodewijk & Elisabeth van Zijverden

---

De Lairessestraat 51 ?????????????  
E-Mail: [info@von-poll.nl](mailto:info@von-poll.nl)

*To Disclaimer of von Poll Immobilien GmbH*

---

[www.von-poll.com](http://www.von-poll.com)