

Torri del Benaco – Gardasee

High-end villa with wonderful views over Lake Garda.

CODE DU BIEN: IT23415909



www.von-poll.it

SURFACE HABITABLE: ca. 313,2 m² • PIÈCES: 6 • SUPERFICIE DU TERRAIN: 16.000 m²

CODE DU BIEN: IT23415909 - Torri del Benaco – Gardasee

- En un coup d'œil
- La propriété
- Informations énergétiques
- Plans d'étage
- Une première impression
- Contact

CODE DU BIEN: IT23415909 - Torri del Benaco – Gardasee

En un coup d'œil

| | |
|------------------------|--------------------------|
| CODE DU BIEN | IT23415909 |
| Surface habitable | ca. 313,2 m ² |
| Disponible à partir du | Selon l'arrangement |
| Pièces | 6 |
| Chambres à coucher | 4 |
| Salles de bains | 5 |
| Année de construction | 2024 |

| | |
|------------------------------|------------------------|
| Type de bien | Maison individuelle |
| Commission pour le locataire | subject to commission |
| Surface total | ca. 574 m ² |
| Surface de plancher | ca. 313 m ² |
| Aménagement | Terrasse |

CODE DU BIEN: IT23415909 - Torri del Benaco – Gardasee

Informations énergétiques

| | | | |
|--|---|---------------------------|----------------------------|
| Type de chauffage | Chauffage par le sol | Certification énergétique | Diagnostic énergétique |
| Chauffage | Pompe à chaleur hydraulique/pneumatique | Consommation d'énergie | 20.00 kWh/m ² a |
| Certification énergétique valable jusqu'au | 01.12.2033 | Classement énergétique | A |
| Source d'alimentation | Pompe à chaleur hydraulique/pneumatique | | |

CODE DU BIEN: IT23415909 - Torri del Benaco – Gardasee

La propriété



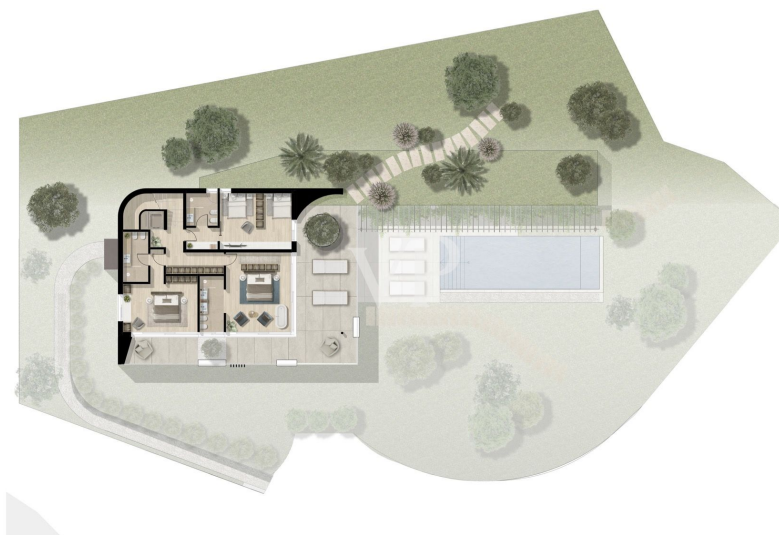
CODE DU BIEN: IT23415909 - Torri del Benaco – Gardasee

La propriété



CODE DU BIEN: IT23415909 - Torri del Benaco – Gardasee

Plans d'étage





Ce plan n'est pas à l'échelle. Les documents nous ont été remis par le client. Pour cette raison, nous ne pouvons pas garantir l'exactitude des informations.

CODE DU BIEN: IT23415909 - Torri del Benaco – Gardasee

Une première impression

The projected high-end villa towers above the enchanting village of "Crero", which belongs to Torri del Benaco, and offers a unique retreat for nature lovers and those seeking peace and quiet. As soon as you drive through the automatic gate, you will be captivated by the flair of this special place. Surrounded by olive groves, you can enjoy a wonderful view of the lake as far as the towns of Maderno and Gargnano on the opposite side of the lake. As you are located between Torri del Benaco and the village of Crero at the widest point of the lake, you can enjoy the "vastness" of the lake and almost feel like you are by the sea. The opposite mountain on the Brescian side of the lake, "Monte Pizzocolo", is called "Monte Gu" or "Napoleon's nose" by the people of Verona because its characteristic south-north peak formation makes it look like the profile of the face of the reclining Emperor Napoleon Bonaparte. The sun sets behind it, allowing you to enjoy breathtaking sunsets from the terrace. The view stretches as far as the bay of Salò and the Isola del Garda to the south on the western side and to the north as far as the Parco Alto del Lago "Tignale". The unspoiled nature creates a fascinating retreat. The adjacent forest leads up the hill towards San Zeno die Montagna. Thanks to the three-storey design, the height of the building cubature offers a panoramic view in a class of its own.

CODE DU BIEN: IT23415909 - Torri del Benaco – Gardasee

Contact

Pour de plus amples informations, veuillez contacter votre personne de contact :

Christian Weissensteiner

Largo Dante Alighieri, n.3 Salò

E-Mail: salo@von-poll.com

To Disclaimer of von Poll Immobilien GmbH

www.von-poll.com