

Benitachell

Luxury villa in Cumbre del Sol

CODE DU BIEN: NE1315V



PRIX D'ACHAT: 2.179.000 EUR • SURFACE HABITABLE: ca. 239 m² • PIÈCES: 3

CODE DU BIEN: NE1315V - 03726 Benitachell

- En un coup d'œil
- La propriété
- Informations énergétiques
- Une première impression
- Contact

CODE DU BIEN: NE1315V - 03726 Benitachell

En un coup d'œil

CODE DU BIEN	NE1315V
Surface habitable	ca. 239 m ²
Disponible à partir du	Selon l'arrangement
Pièces	3
Chambres à coucher	3
Salles de bains	4

Prix d'achat	2.179.000 EUR
Type de bien	Villa
Surface total	ca. 542 m ²
Surface de plancher	ca. 0 m ²
Aménagement	Piscine

CODE DU BIEN: NE1315V - 03726 Benitachell

Informations énergétiques

Certification énergétique	0.00
Consommation finale d'énergie	0.00 kWh/m ² a

CODE DU BIEN: NE1315V - 03726 Benitachell

La propriété



CODE DU BIEN: NE1315V - 03726 Benitachell

La propriété



CODE DU BIEN: NE1315V - 03726 Benitachell

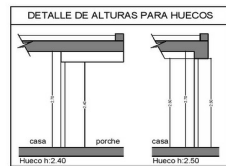
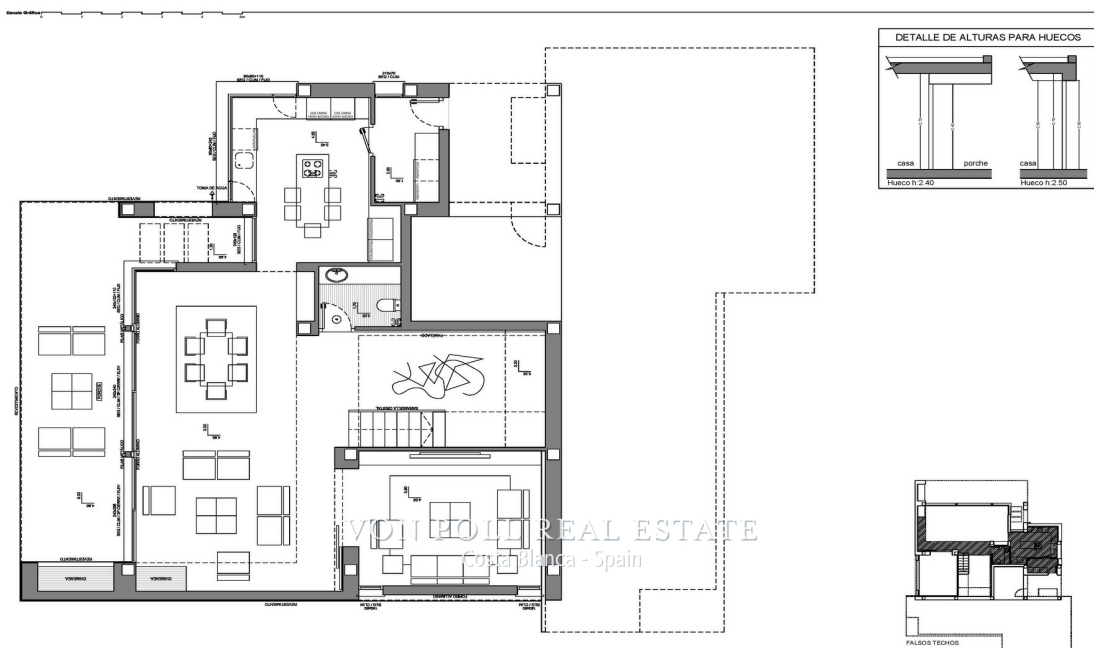
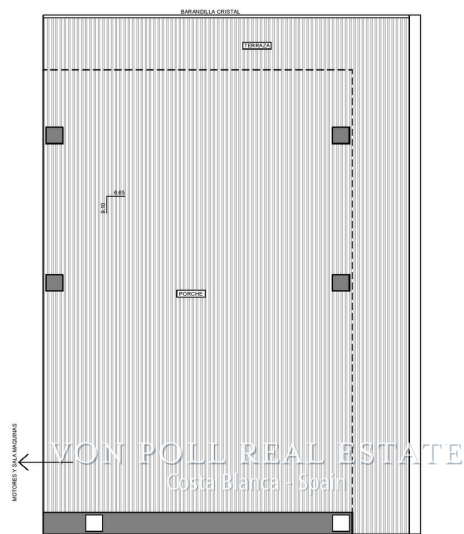
La propriété



CODE DU BIEN: NE1315V - 03726 Benitachell

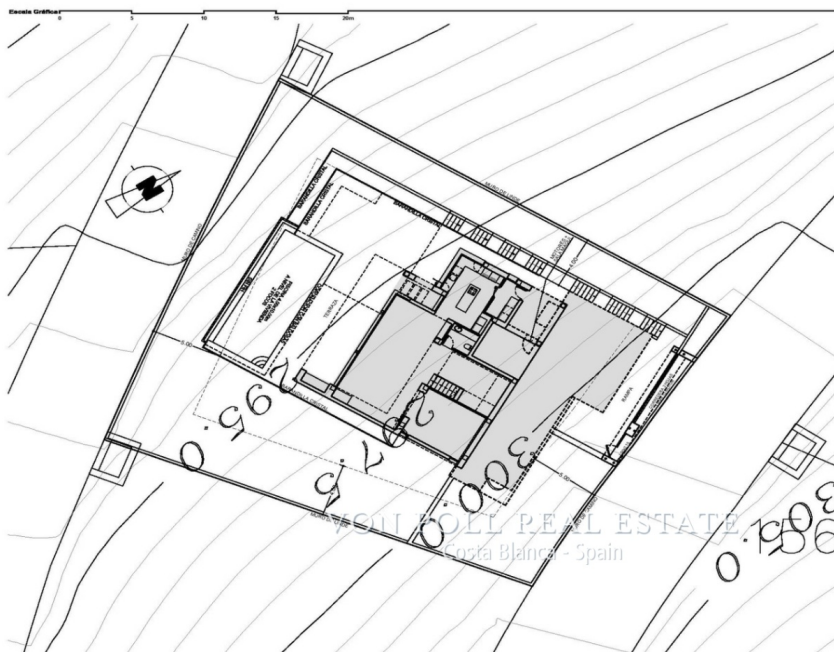
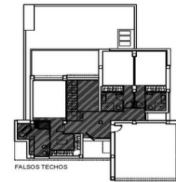
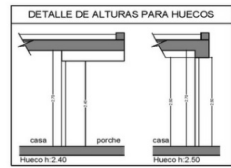
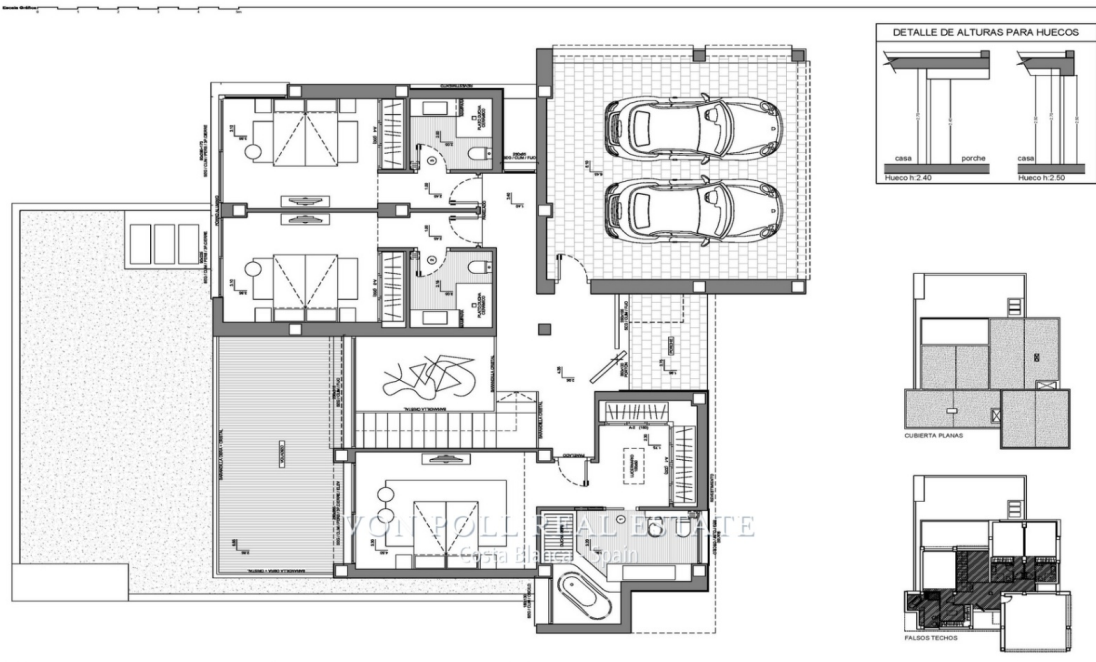
La propriété

Escala Gráfica 0 1 2 3 4 5m



CODE DU BIEN: NE1315V - 03726 Benitachell

La propriété



VACIO SANITARIO: 50.90 m²

CODE DU BIEN: NE1315V - 03726 Benitachell

Une première impression

Beautiful modern villa located in the most exclusive area of the Cumbre del Sol urb., in a luxury residential complex that houses large luxury villas and offers stunning sea views and fantastic night views with the skyline of Calpe and Benidorm in the background. Just a 10 minute drive to the stunning crystal clear coves and coastal towns of Javea and Moraira.

This house is designed to enjoy the fantastic sea views, climate and light of the Mediterranean. With large windows to let in the light and warmth of the sun, outdoor dining room and living room with fireplace and several terraces to sunbathe and enjoy the outdoors.

There are 3 bedrooms, all with en-suite bathrooms, the master bedroom has a spacious en-suite bathroom with bath and shower, dressing room and private terrace.

The main floor consists of a large kitchen with a central island with fireplace and breakfast bar, laundry room, pantry and access to an indoor/outdoor dining room. A spacious living room with fireplace, a TV/cinema room, a summer dining room and a cosy relaxation area with fireplace, a large terrace where the infinity pool is located, consisting of several areas to enjoy the sunny days that the Mediterranean climate offers us.

On the ground floor there is a leisure room with a large private terrace.

The property is fully fenced, has covered parking for two vehicles and a studied interior design and landscaping project that allows it to be adapted to the tastes and needs of its owners, a unique luxury villa on the Costa Blanca North.

Very good transport links with two international airports (Alicante and Valencia) less than 100 km away and strategically located between Alicante and Valencia.

Contact us today to live your dream on the Costa Blanca

CODE DU BIEN: NE1315V - 03726 Benitachell

Contact

Pour de plus amples informations, veuillez contacter votre personne de contact :

Yohanne Pezham Goergens & Nicolai Jensen

Carrer Benidorm, 2 Costa Blanca
E-Mail: calpe@von-poll.com

To Disclaimer of von Poll Immobilien GmbH

www.von-poll.com