

Santa María del Camí – Mitte

Townhouse with huge garden and views, located very close to the centre of Santa Maria.

CODE DU BIEN: ES233744269



PRIX D'ACHAT: 490.000 EUR • SURFACE HABITABLE: ca. 234 m² • PIÈCES: 6 • SUPERFICIE DU TERRAIN: 334 m²

CODE DU BIEN: ES233744269 - 07320 Santa María del Camí – Mitte

- En un coup d'œil
- La propriété
- Une première impression
- Détails des commodités
- Tout sur l'emplacement
- Plus d'informations
- Contact

CODE DU BIEN: ES233744269 - 07320 Santa María del Camí – Mitte

En un coup d'œil

CODE DU BIEN	ES233744269
Surface habitable	ca. 234 m ²
Disponible à partir du	Selon l'arrangement
Pièces	6
Chambres à coucher	5
Salles de bains	1
Année de construction	1950

Prix d'achat	490.000 EUR
Type de bien	Maison en bande
État de la propriété	A rénover
Surface de plancher	ca. 0 m ²
Aménagement	Terrasse, Cheminée

CODE DU BIEN: ES233744269 - 07320 Santa María del Camí – Mitte

La propriété



CODE DU BIEN: ES233744269 - 07320 Santa María del Camí – Mitte

La propriété



CODE DU BIEN: ES233744269 - 07320 Santa María del Camí – Mitte

La propriété



CODE DU BIEN: ES233744269 - 07320 Santa María del Camí – Mitte

La propriété



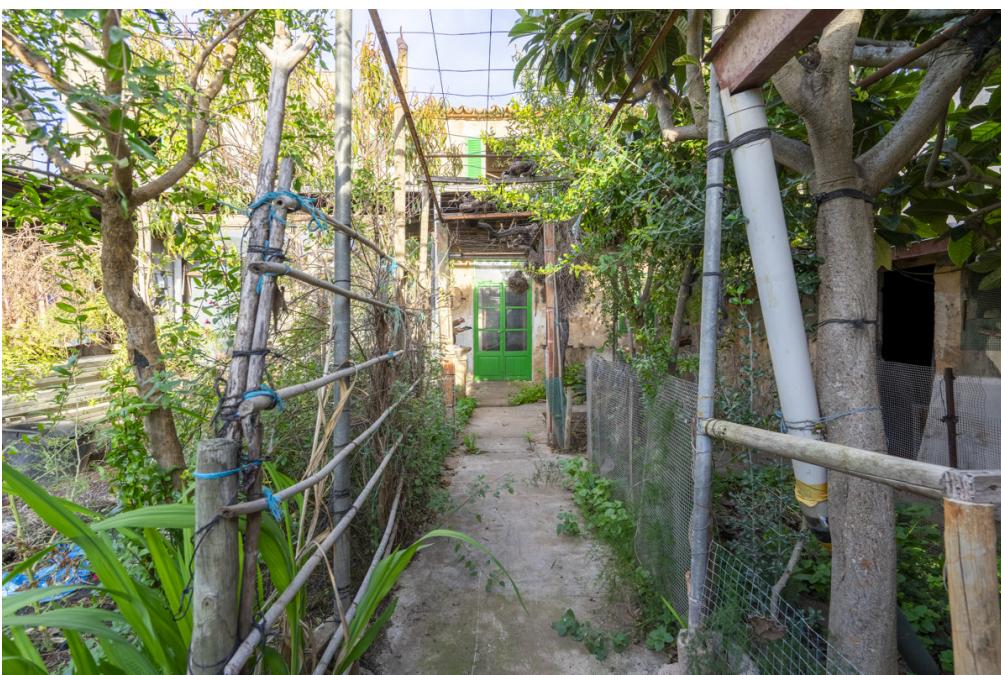
CODE DU BIEN: ES233744269 - 07320 Santa María del Camí – Mitte

La propriété



CODE DU BIEN: ES233744269 - 07320 Santa María del Camí – Mitte

La propriété



CODE DU BIEN: ES233744269 - 07320 Santa María del Camí – Mitte

La propriété



CODE DU BIEN: ES233744269 - 07320 Santa María del Camí – Mitte

La propriété



GARDEN AREA ca. 195 m2

CODE DU BIEN: ES233744269 - 07320 Santa María del Camí – Mitte

Une première impression

Townhouse located very close to the centre, in a quiet corner of Santa Maria. It has a large back garden and a garage for several cars, as well as unobstructed views of the surrounding area. The property is distributed over two floors and has a total of six bedrooms, the kitchen and several utility rooms. The house is in need of updating and offers a lot of possibilities. Additional features include mains electricity, town water, well, cistern, two fireplaces and a wood burning oven.

CODE DU BIEN: ES233744269 - 07320 Santa María del Camí – Mitte

Détails des commodités

- garden
- Own well and cistern
- garage

CODE DU BIEN: ES233744269 - 07320 Santa María del Camí – Mitte

Tout sur l'emplacement

Santa María del Camí, a picturesque village in the heart of Mallorca, has almost 7,000 inhabitants and has become a highly sought-after place by locals and foreigners alike, combining traditional charm with modern comforts. The imposing parish church, with its striking bell tower, is an architectural jewel that reflects the history of the village. Another attraction is the wine, which is grown in Santa María and attracts many visitors, and on Sundays there is a weekly market offering a wealth of fresh produce, handmade goods and local specialties. The picturesque landscape, characterized by rolling hills and vineyards, is ideal for relaxing walks and bike rides and the nearby Tramuntana mountains can be explored. The central location of Santa Maria del Camí, only about 20 km from Palma, makes it an attractive place to live for those who appreciate the tranquillity of village life but still want the amenities of the city within easy reach. The airport and beaches are also within similar reach. Meanwhile, there are a variety of high-quality restaurants and shopping opportunities here. In addition to the renowned international school "The Montessori School", there is also a public school. The leisure center "Mallorca Fashion Outlet", which is only a few minutes away by car, offers numerous fashion stores, bars, restaurants, activities for the whole family and a large cinema.

CODE DU BIEN: ES233744269 - 07320 Santa María del Camí – Mitte

Plus d'informations

We generally recommend having the building law situation checked by a specialist lawyer. All details are based exclusively on the information provided by the owner or client. We assume no liability for the completeness, accuracy and timeliness of the information. The brokerage fee is payable by the vendor. Any taxes, notary and land registry costs incurred on the purchase are to be borne by the buyer.

CODE DU BIEN: ES233744269 - 07320 Santa María del Camí – Mitte

Contact

Pour de plus amples informations, veuillez contacter votre personne de contact :

Florian Waetzoldt

Placa Hostals 11 Majorque - Santa Maria

E-Mail: santamaria@von-poll.com

To Disclaimer of von Poll Immobilien GmbH

www.von-poll.com