

Palma

Luxury penthouse apartments with exceptional offer in Nou Levant

CODE DU BIEN: ES21379103_6.H



PRIX D'ACHAT: 3.360.000 EUR • SURFACE HABITABLE: ca. 133 m² • PIÈCES: 4

CODE DU BIEN: ES21379103_6.H - 07007 Palma

- En un coup d'œil
- La propriété
- Informations énergétiques
- Plans d'étage
- Une première impression
- Détails des commodités
- Contact

CODE DU BIEN: ES21379103_6.H - 07007 Palma

En un coup d'œil

CODE DU BIEN	ES21379103_6.H
Surface habitable	ca. 133 m ²
Disponible à partir du	Selon l'arrangement
Etage	6
Pièces	4
Chambres à coucher	3
Salles de bains	3
Année de construction	2022
Place de stationnement	1 x Parking souterrain

Prix d'achat	3.360.000 EUR
Type	Attique
Technique de construction	massif
Surface de plancher	ca. 385 m ²
Aménagement	Terrasse, WC invités, Piscine, Jardin / utilisation partagée, Bloc-cuisine

CODE DU BIEN: ES21379103_6.H - 07007 Palma

Informations énergétiques

Type de chauffage	Chauffage par le sol
Source d'alimentation	Pompe à chaleur hydraulique/pneumatique

CODE DU BIEN: ES21379103_6.H - 07007 Palma

La propriété



CODE DU BIEN: ES21379103_6.H - 07007 Palma

La propriété



CODE DU BIEN: ES21379103_6.H - 07007 Palma

La propriété



CODE DU BIEN: ES21379103_6.H - 07007 Palma

La propriété



CODE DU BIEN: ES21379103_6.H - 07007 Palma

La propriété



CODE DU BIEN: ES21379103_6.H - 07007 Palma

La propriété



CODE DU BIEN: ES21379103_6.H - 07007 Palma

La propriété



CODE DU BIEN: ES21379103_6.H - 07007 Palma

La propriété



CODE DU BIEN: ES21379103_6.H - 07007 Palma

La propriété



CODE DU BIEN: ES21379103_6.H - 07007 Palma

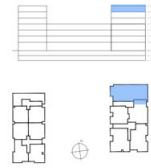
Plans d'étage



- WITKENS
- WARDROBES
- SMART CONTROL
- PANORAMA WINDOWS
- SOLAR CONTROL GLASS
- COMPARTMENT POOL
- COMPARTMENT LIFT
- SECURITY SYSTEM
- ART WALL
- BLINDS
- ACHEATING
- REFORCED WINDOW

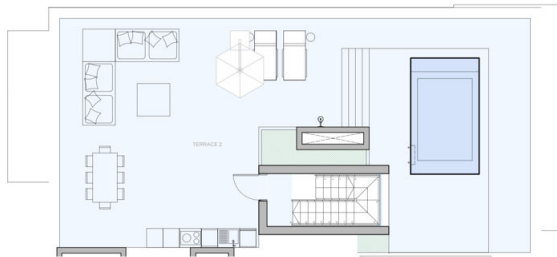
XO1 **WAVE**
0m 1m 2m 3m 4m
This document is information. It has not been checked and we do not guarantee its accuracy.

XOJAY



APARTMENT 6.H	
FLOOR USABLE FLOOR AREA	153.79
FLOOR GROSS FLOOR AREA	156.08
TERRACE 1	16.00
TERRACE 2	15.47
POOL	10.83
GROSS FLOOR AREA	201.54
GFA + COMMON AREAS	201.71
ROOM SURFACE	
ENTRY	10.57
LIVING DINING KITCHEN	44.26
STAIRCASE	4.40
HALLWAY 1	5.28
LAUNDRY	4.15
BEDROOM 1	19.21
BEDROOM 1	9.94
BEDROOM 2	12.51
BEDROOM 2	5.89
BEDROOM 3	10.57
BATHROOM 3	5.61
POOL	
LANDING	2.10
TOTAL USABLE FLOOR AREA	153.79

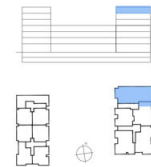
APARTMENT **6.H**



- WITKENS
- WARDROBES
- SMART CONTROL
- PANORAMA WINDOWS
- SOLAR CONTROL GLASS
- COMPARTMENT POOL
- COMPARTMENT LIFT
- SECURITY SYSTEM
- ART WALL
- BLINDS
- ACHEATING
- REFORCED WINDOW

XO1 **WAVE**
0m 1m 2m 3m 4m
This document is information. It has not been checked and we do not guarantee its accuracy.

XOJAY



APARTMENT 6.HA	
FLOOR USABLE FLOOR AREA	153.79
FLOOR GROSS FLOOR AREA	156.08
TERRACE 1	16.00
TERRACE 2	15.47
POOL	10.83
GROSS FLOOR AREA	201.54
GFA + COMMON AREAS	201.71
ROOM SURFACE	
ENTRY	10.57
LIVING DINING KITCHEN	44.26
STAIRCASE	4.40
HALLWAY 1	5.28
LAUNDRY	4.15
BEDROOM 1	19.21
BATHROOM 1	9.94
BEDROOM 2	12.51
BATHROOM 2	5.89
BEDROOM 3	10.57
BATHROOM 3	5.61
POOL	
LANDING	2.10
TOTAL USABLE FLOOR AREA	153.79

APARTMENT **6.HA**

Ce plan n'est pas à l'échelle. Les documents nous ont été remis par le client. Pour cette raison, nous ne pouvons pas garantir l'exactitude des informations.

CODE DU BIEN: ES21379103_6.H - 07007 Palma

Une première impression

If you are looking for something special and luxurious in the immediate vicinity of the sea in a fantastic Mediterranean city, you will find it. Luxury apartments with an exceptional offer are for sale. The complex with a total of 84 apartments is located in the up-and-coming location Nou Levant. The layout and layout of the apartments maximise natural light through floor-to-ceiling glass walls that open onto elegant private balconies, providing residents with an outdoor living area to enjoy Palma's mild climate. The striking indoor-outdoor concept creates open plan living spaces with panoramic electric windows and integrated outdoor living areas, along with beautiful roof terraces and gardens. There are three lines to choose from, creating unique properties with an individual feel, using the highest quality materials. The modern, individually designed and fully equipped kitchens with high quality Miele brand electrical appliances are not only for dining, but also for family life and entertaining. Bathrooms feature built-in or freestanding baths and advanced appliances and fixtures. They meet the highest standards and offer a blend of practicality and impeccable style. The penthouses have a spectacular private roof terrace with pool or Jacuzzi and barbecue area with ground planting, designed for privacy and overlooking charming Portixol. The communal outdoor deck offers a place to lounge or swim in an exceptional pool. There are also elegant sun loungers available. A place to relax and unwind is available. With the finest private amenities available exclusively to residents, surrounding an inviting multi-level garden lounge with palm trees, vegetation, overhead lights and fire pits. A true urban oasis. Equipped with sauna and steam room, showers and changing rooms. The fitness area is equipped with state-of-the-art fitness equipment. The XO Lounge offers spaces to live, work and enjoy. The common areas have been carefully designed with comfort and convenience in mind to meet the leisure and business needs of residents in a relaxed atmosphere, complemented by excellent facilities and services. A virtual tour is available for this property.

CODE DU BIEN: ES21379103_6.H - 07007 Palma

Détails des commodités

- Ceramic tiles GUBI cloud 120x120cm
- Underfloor heating
- Shadow joints (skirting boards)
- Suspended ceiling
- Interior doors: 1-leaf frameless passage door - Inverse Portaro
- intercom system
- Electrical installation
- Electric blinds
- Power sockets/ USB connections
- Intercom system
- Swimming Pool
- Double glazed windows
- Fitted kitchen
- Terrace with
- Municipal water supply
- Municipal electricity supply

CODE DU BIEN: ES21379103_6.H - 07007 Palma

Contact

Pour de plus amples informations, veuillez contacter votre personne de contact :

Philip Bornewasser

Ronda Migjorn, 145B Majorque - Lluçmajor

E-Mail: llucmajor@von-poll.com

To Disclaimer of von Poll Immobilien GmbH

www.von-poll.com