

Amsterdam

Menarhof 20

CODE DU BIEN: NL24185498



PRIX D'ACHAT: 1.075.000 EUR • SURFACE HABITABLE: ca. 162 m² • PIÈCES: 5

CODE DU BIEN: NL24185498 - 1043 EV Amsterdam

- En un coup d'œil
- La propriété
- Informations énergétiques
- Une première impression
- Détails des commodités
- Tout sur l'emplacement
- Contact

CODE DU BIEN: NL24185498 - 1043 EV Amsterdam

En un coup d'œil

CODE DU BIEN	NL24185498	Prix d'achat	1.075.000 EUR
Surface habitable	ca. 162 m ²	Type	Appartement
Pièces	5		
Chambres à coucher	3		
Salles de bains	1		
Année de construction	2023		

CODE DU BIEN: NL24185498 - 1043 EV Amsterdam

Informations énergétiques

Informations
énergétiques

Lors de la création du document, son diagnostic de performance énergétique n'était pas encore disponible.

Classement
énergétique

A+

CODE DU BIEN: NL24185498 - 1043 EV Amsterdam

La propriété



CODE DU BIEN: NL24185498 - 1043 EV Amsterdam

La propriété



CODE DU BIEN: NL24185498 - 1043 EV Amsterdam

La propriété



CODE DU BIEN: NL24185498 - 1043 EV Amsterdam

La propriété



CODE DU BIEN: NL24185498 - 1043 EV Amsterdam

La propriété



CODE DU BIEN: NL24185498 - 1043 EV Amsterdam

La propriété



CODE DU BIEN: NL24185498 - 1043 EV Amsterdam

La propriété



CODE DU BIEN: NL24185498 - 1043 EV Amsterdam

La propriété



CODE DU BIEN: NL24185498 - 1043 EV Amsterdam

La propriété



CODE DU BIEN: NL24185498 - 1043 EV Amsterdam

La propriété



CODE DU BIEN: NL24185498 - 1043 EV Amsterdam

La propriété



CODE DU BIEN: NL24185498 - 1043 EV Amsterdam

La propriété



CODE DU BIEN: NL24185498 - 1043 EV Amsterdam

La propriété



CODE DU BIEN: NL24185498 - 1043 EV Amsterdam

La propriété



CODE DU BIEN: NL24185498 - 1043 EV Amsterdam

La propriété



CODE DU BIEN: NL24185498 - 1043 EV Amsterdam

La propriété



CODE DU BIEN: NL24185498 - 1043 EV Amsterdam

La propriété



CODE DU BIEN: NL24185498 - 1043 EV Amsterdam

La propriété



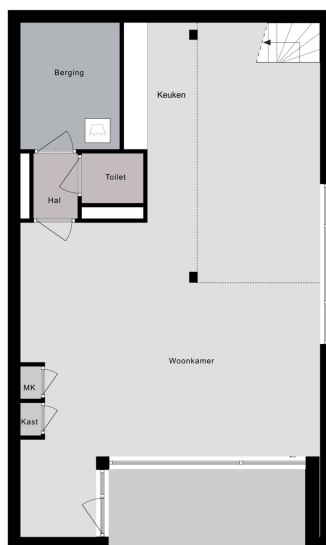
CODE DU BIEN: NL24185498 - 1043 EV Amsterdam

La propriété



CODE DU BIEN: NL24185498 - 1043 EV Amsterdam

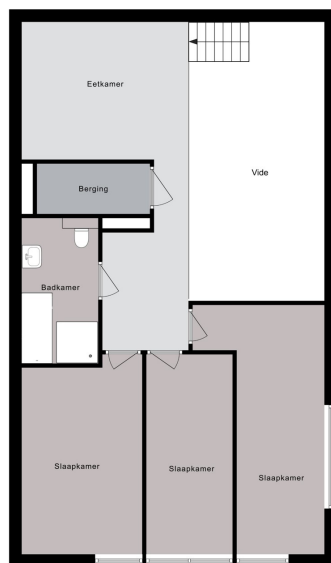
La propriété



Begane grond

CODE DU BIEN: NL24185498 - 1043 EV Amsterdam

La propriété



1e verdieping

CODE DU BIEN: NL24185498 - 1043 EV Amsterdam

La propriété



CODE DU BIEN: NL24185498 - 1043 EV Amsterdam

Une première impression

VERTICAL CENTER IS COMPLETED! Great living in a sustainable city house completely surrounded by greenery in an up-and-coming neighborhood with a perpetual leasehold that has already been bought off. This beautiful new-build apartment (162 m²) spread over two floors is part of the sustainable new-build project VERTICAL and has a living floor with open kitchen, 3 bedrooms, bathroom, separate toilet, storage room and terrace (approx. 10 m²) and is located on a stone's throw from Sloterdijk Station and is situated on the Menarahof, a sunny, quiet and green square. Builder Heijmans: "We offer our target groups maximum living comfort in a highly urban environment. The architecture is distinctive, partly due to the different signatures of the four architects." The green facades and roofs, with nest boxes and water storage function, stimulate the flora and fauna in the area." The 'vertical gardens' that are created as a result are part of the so-called Bretten cloth, an ecological zone as a connection between the Lange Bretten and the Westerpark. "The green is being pulled into the city."

CODE DU BIEN: NL24185498 - 1043 EV Amsterdam

Détails des commodités

The apartment is located in the middle and lowest tower, Vertical Center, divided over the ground floor and the mezzanine floor.

Ground floor: Direct access to the spacious living room. The living room is a playful space with a difference in height, open kitchen and a spacious adjoining terrace. At the rear there is a hall with separate toilet with fountain, an internal storage room with washing machine connection and a staircase to the sleeping floor.

Mezzanine floor: Spacious landing with access to all areas. The three bedrooms are located at the front, in the middle the storage room and the bathroom with toilet, bath, shower and sink.

CODE DU BIEN: NL24185498 - 1043 EV Amsterdam

Tout sur l'emplacement

The area around Sloterdijk Station in Amsterdam-West is rapidly transforming from a location with a monoculture to a mixed living and working area. It's a real hub location. Nice to stay in, easy to go out. Train, bus and metro station Amsterdam-Sloterdijk is within walking distance. Within fifteen minutes you are at Schiphol Airport or the center of Amsterdam, with ten minutes by bike you are in Westerpark and the sea is half an hour away for a day at the beach.

CODE DU BIEN: NL24185498 - 1043 EV Amsterdam

Contact

Pour de plus amples informations, veuillez contacter votre personne de contact :

Joan Dik, Marie Christine Lodewijk & Elisabeth van Zijverden

De Lairesestraat 51 Amsterdam
E-Mail: info@von-poll.nl

To Disclaimer of von Poll Immobilien GmbH

www.von-poll.com