

Amsterdam

Menarhof 24

CODE DU BIEN: NL24185497



PRIX D'ACHAT: 945.000 EUR • SURFACE HABITABLE: ca. 140 m² • PIÈCES: 4

CODE DU BIEN: NL24185497 - 1043 EV Amsterdam

- En un coup d'œil
- La propriété
- Informations énergétiques
- Une première impression
- Détails des commodités
- Tout sur l'emplacement
- Plus d'informations
- Contact

CODE DU BIEN: NL24185497 - 1043 EV Amsterdam

En un coup d'œil

CODE DU BIEN	NL24185497
Surface habitable	ca. 140 m ²
Pièces	4
Chambres à coucher	3
Salles de bains	1
Année de construction	2024

Prix d'achat	945.000 EUR
Type	Appartement
Surface de plancher	ca. 0 m ²

CODE DU BIEN: NL24185497 - 1043 EV Amsterdam

Informations énergétiques

Classement
énergétique

A+

CODE DU BIEN: NL24185497 - 1043 EV Amsterdam

La propriété



CODE DU BIEN: NL24185497 - 1043 EV Amsterdam

La propriété



CODE DU BIEN: NL24185497 - 1043 EV Amsterdam

La propriété



CODE DU BIEN: NL24185497 - 1043 EV Amsterdam

La propriété



CODE DU BIEN: NL24185497 - 1043 EV Amsterdam

La propriété



CODE DU BIEN: NL24185497 - 1043 EV Amsterdam

La propriété



CODE DU BIEN: NL24185497 - 1043 EV Amsterdam

La propriété



CODE DU BIEN: NL24185497 - 1043 EV Amsterdam

La propriété



CODE DU BIEN: NL24185497 - 1043 EV Amsterdam

La propriété



CODE DU BIEN: NL24185497 - 1043 EV Amsterdam

La propriété



CODE DU BIEN: NL24185497 - 1043 EV Amsterdam

La propriété



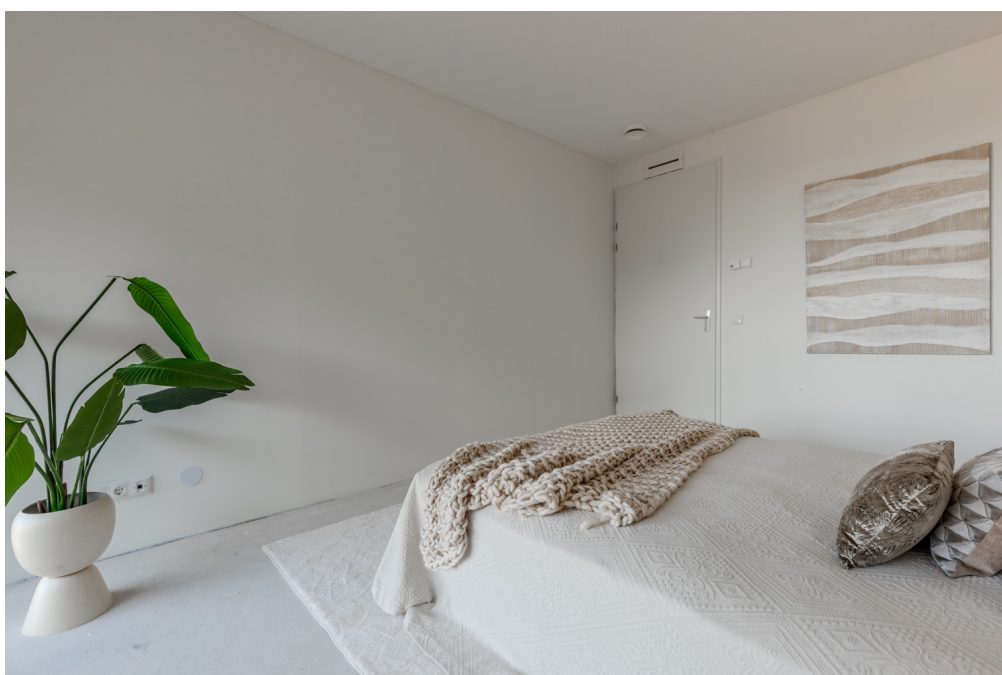
CODE DU BIEN: NL24185497 - 1043 EV Amsterdam

La propriété



CODE DU BIEN: NL24185497 - 1043 EV Amsterdam

La propriété



CODE DU BIEN: NL24185497 - 1043 EV Amsterdam

La propriété



CODE DU BIEN: NL24185497 - 1043 EV Amsterdam

La propriété



CODE DU BIEN: NL24185497 - 1043 EV Amsterdam

La propriété



CODE DU BIEN: NL24185497 - 1043 EV Amsterdam

La propriété



CODE DU BIEN: NL24185497 - 1043 EV Amsterdam

La propriété



CODE DU BIEN: NL24185497 - 1043 EV Amsterdam

La propriété



CODE DU BIEN: NL24185497 - 1043 EV Amsterdam

La propriété



CODE DU BIEN: NL24185497 - 1043 EV Amsterdam

La propriété



CODE DU BIEN: NL24185497 - 1043 EV Amsterdam

La propriété



CODE DU BIEN: NL24185497 - 1043 EV Amsterdam

La propriété



CODE DU BIEN: NL24185497 - 1043 EV Amsterdam

La propriété



CODE DU BIEN: NL24185497 - 1043 EV Amsterdam

La propriété



CODE DU BIEN: NL24185497 - 1043 EV Amsterdam

La propriété



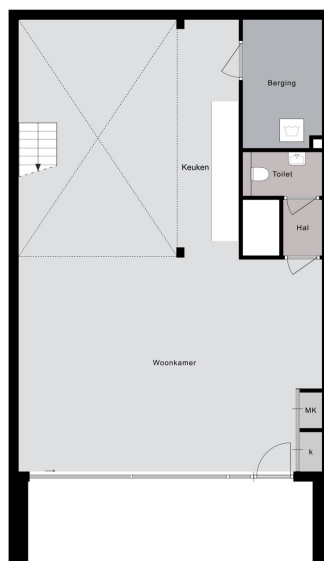
CODE DU BIEN: NL24185497 - 1043 EV Amsterdam

La propriété



CODE DU BIEN: NL24185497 - 1043 EV Amsterdam

La propriété



Begane grond

CODE DU BIEN: NL24185497 - 1043 EV Amsterdam

La propriété



CODE DU BIEN: NL24185497 - 1043 EV Amsterdam

Une première impression

VERTICAL CENTER IS COMPLETED! Beautiful town house in sustainable new construction project VERTICAL with perpetual leasehold. Discover this beautiful new-build apartment (140 m²) spread over two floors, located in the already completed VERTICAL project. This modern home, part of VERTICAL, offers a spacious living space with open kitchen, 3 bedrooms, bathroom, 2 separate toilets, indoor storage and a terrace (approximately 11 m²). Within walking distance of Sloterdijk Station, this town house is in an ideal location.

CODE DU BIEN: NL24185497 - 1043 EV Amsterdam

Détails des commodités

This apartment is located in the low-rise building of the VERTICAL CENTER project, divided over the ground floor and the mezzanine floor.

Ground floor: Direct access to the spacious open living space with high windows and a sliding door to the front terrace. The yet to be installed kitchen is located at the back of the apartment with a ceiling height of 4.20 meters and has an open staircase leading upstairs. A toilet with vestibule and an internal storage room with washing machine connection can also be found on this floor.

Mezzanine floor: Spacious landing with access to all areas. The three bedrooms are located at the front, in the middle a second separate toilet with sink and a storage room. At the rear is the bathroom with a bath, shower and double sink.

CODE DU BIEN: NL24185497 - 1043 EV Amsterdam

Tout sur l'emplacement

Sloterdijk station in Amsterdam-West is undergoing a rapid transformation from monoculture to a mixed living and working area. It is a true hub location, easily accessible and close to amenities. Amsterdam-Sloterdijk train, bus and metro station are within walking distance. You can reach Schiphol Airport or the center of Amsterdam within fifteen minutes. A ten-minute bike ride will take you to Westerpark, and a half-hour drive will take you to the sea for a relaxing day at the beach.

CODE DU BIEN: NL24185497 - 1043 EV Amsterdam

Plus d'informations

VERTICAL This property is part of the VERTICAL project, consisting of 3 sub-areas: "East" with a high tower with 112 apartments, "Center" with 14 town homes and garden homes in low-rise buildings, and "West" with 42 (private sector) rental homes. The project was designed by 5 Dutch architects and meets contemporary sustainability requirements. VERTICAL will be one of the most sustainable buildings in the Netherlands. The design is organic with lots of greenery through vertical gardens. In addition to the transformation of the neighborhood into a diverse living-working area, attention is paid to conviviality with the "shared living" concept. Meet friends or neighbors on a floor in the residential tower. The complex also has a bar/restaurant, a gym and communal work space.

CODE DU BIEN: NL24185497 - 1043 EV Amsterdam

Contact

Pour de plus amples informations, veuillez contacter votre personne de contact :

Joan Dik, Marie Christine Lodewijk & Elisabeth van Zijverden

De Lairesestraat 51 Amsterdam
E-Mail: info@von-poll.nl

To Disclaimer of von Poll Immobilien GmbH

www.von-poll.com