

Llucmajor – Süd

New build store for sale in Llucmajor

Número de propiedad: ES24379051



PRECIO DE COMPRA: 230.000 EUR

Número de propiedad: ES24379051 - 07620 Lluçmajor – Süd

- De un vistazo
- La propiedad
- Planos de planta
- Una primera impresión
- Detalles de los servicios
- Todo sobre la ubicación
- Otros datos
- Contacto con el socio

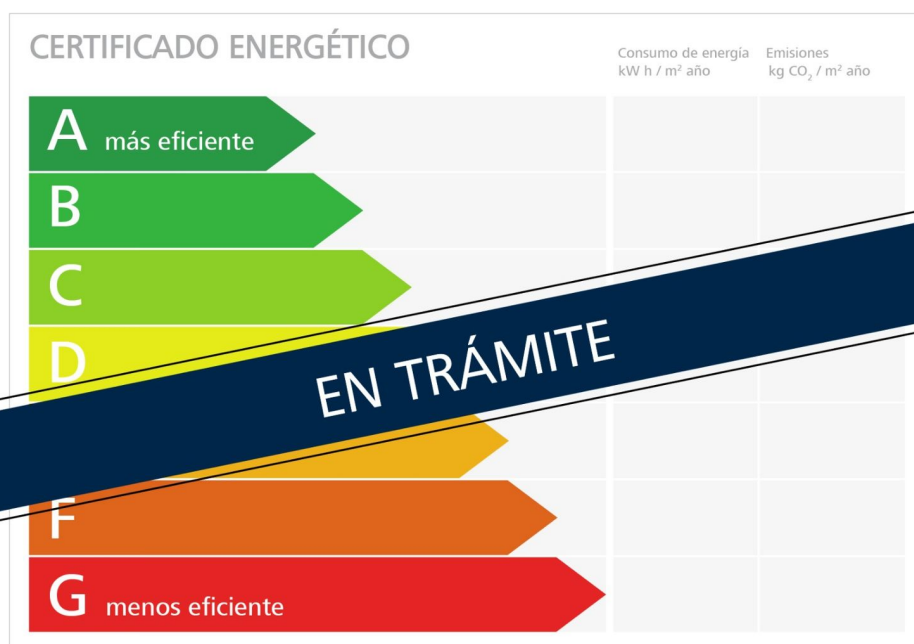
Número de propiedad: ES24379051 - 07620 Lluçmajor – Süd

De un vistazo

Número de propiedad	ES24379051	Precio de compra	230.000 EUR
Ocupación a partir de	Previo acuerdo	Comercio	Local comercial
Año de construcción	2024	Método de construcción	Sólido
		Espacio utilizable	ca. 0 m ²

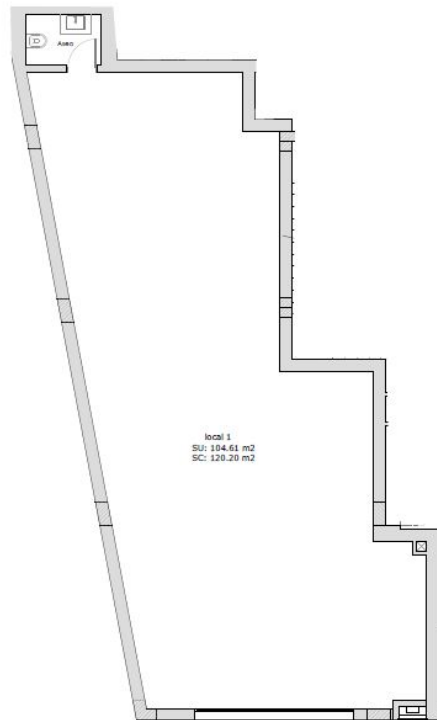
Número de propiedad: ES24379051 - 07620 Lluçmajor – Süd

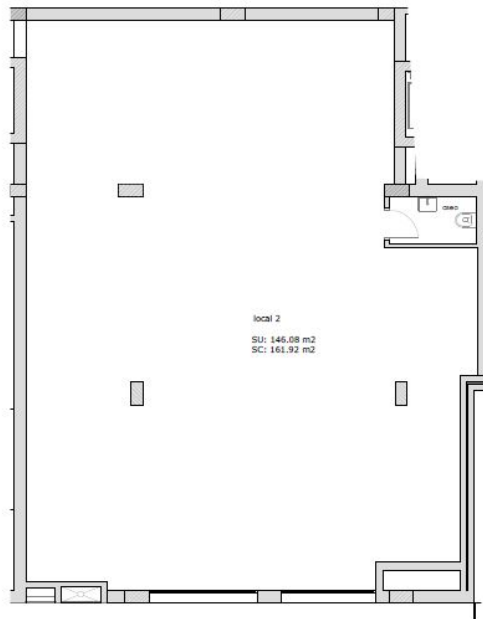
La propiedad



Número de propiedad: ES24379051 - 07620 Lluçmajor – Süd

Planos de planta





Este plano no está a escala. Los documentos nos fueron entregados por el cliente. Por esta razón, no podemos garantizar la exactitud de la información.

Número de propiedad: ES24379051 - 07620 Lluçmajor – Süd

Una primera impresión

This new store is for sale and offers many possibilities on a total area of 120 to 162 square meters. The large shop windows ensure maximum visibility. The spacious interior offers plenty of room for your creative ideas. The open design allows for flexible use, whether for retail, gastronomy or services. The location in Lluçmajor is ideal for tradespeople who appreciate the vibrant life of a community and therefore offers constant customer potential. A WC is available in the store. Completion is planned for the end of 2024.

Número de propiedad: ES24379051 - 07620 Lluçmajor – Süd

Detalles de los servicios

- WC
- Municipal water supply
- Municipal power supply

Número de propiedad: ES24379051 - 07620 Lluçmajor – Süd

Todo sobre la ubicación

Lluçmajor is the largest municipality in Mallorca in terms of area. The quaint Mallorcan town is located to the east of the airport in the middle of a magnificent landscape near the Puig de Randa mountain. The market square in the town center is lined with various cafés and restaurants and invites you to linger. The fruit and vegetable market takes place here on Wednesdays and Fridays, when the town invites you to stroll through the many alleyways. As the area around Lluçmajor has a well-developed network of cycle paths, many cyclists meet here all year round for a leisurely stop. The Son Antem golf course with its two 18-hole golf courses is 6 km away, the airport about 17 km and the city of Palma about 23 km.

Número de propiedad: ES24379051 - 07620 Lluçmajor – Süd

Otros datos

We generally recommend having the building law situation checked by a specialist lawyer. All details are based exclusively on information provided by the owner or client. We assume no liability for the completeness, accuracy and timeliness of the information. The brokerage fee is payable by the vendor. Any taxes, notary and land registry costs incurred on the purchase are to be borne by the buyer.

Número de propiedad: ES24379051 - 07620 Lluçmajor – Süd

Contacto con el socio

Para más información, diríjase a su persona de contacto:

Philip Bornewasser

Ronda Migjorn, 145B Mallorca - Lluçmajor

E-Mail: llucmajor@von-poll.com

To Disclaimer of von Poll Immobilien GmbH

www.von-poll.com