

Establiments – Palma

# Charming townhouse with Pool in Palma- Establiments

Property ID: ES233744604



PURCHASE PRICE: 2.950.000 EUR • LIVING SPACE: ca. 278 m<sup>2</sup> • ROOMS: 4 • LAND AREA: 537 m<sup>2</sup>

Property ID: ES233744604 - 07010 Establiments – Palma

- At a glance
- The property
- Energy Data
- Floor plans
- A first impression
- Details of amenities
- All about the location
- Other information
- Contact partner

Property ID: ES233744604 - 07010 Establiments – Palma

## At a glance

|                 |                        |                       |                                   |
|-----------------|------------------------|-----------------------|-----------------------------------|
| Property ID     | ES233744604            | Purchase Price        | 2.950.000 EUR                     |
| Living Space    | ca. 278 m <sup>2</sup> | Condition of property | First occupancy                   |
| Rooms           | 4                      | Equipment             | Terrace, Swimming pool, Fireplace |
| Bedrooms        | 3                      |                       |                                   |
| Bathrooms       | 3                      |                       |                                   |
| Type of parking | 1 x Garage             |                       |                                   |

Property ID: ES233744604 - 07010 Establiments – Palma

## Energy Data

|                    |                                                                             |
|--------------------|-----------------------------------------------------------------------------|
| Type of heating    | Underfloor heating                                                          |
| Power Source       | Air-to-water heat pump                                                      |
| Energy information | At the time of preparing the document, no energy certificate was available. |

Property ID: ES233744604 - 07010 Establiments – Palma

## The property



Property ID: ES233744604 - 07010 Establiments – Palma

## The property



Property ID: ES233744604 - 07010 Establiments – Palma

## The property



Property ID: ES233744604 - 07010 Establiments – Palma

## The property





Property ID: ES233744604 - 07010 Establiments – Palma

## The property



Property ID: ES233744604 - 07010 Establiments – Palma

## The property



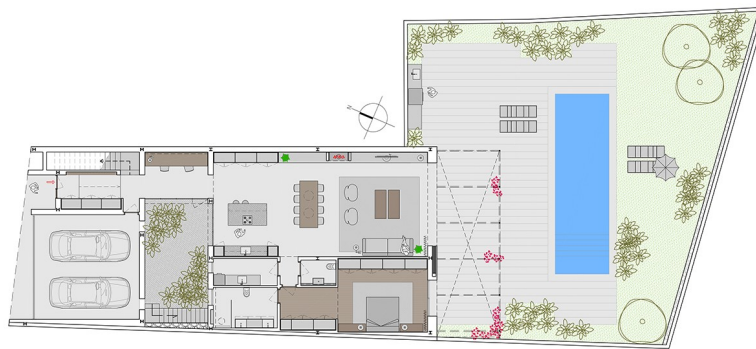
Property ID: ES233744604 - 07010 Establiments – Palma

## The property



Property ID: ES233744604 - 07010 Establiments – Palma

## Floor plans



This floor plan is not to scale. The documents were given to us by the client. For this reason, we cannot guarantee the accuracy of the information.

Property ID: ES233744604 - 07010 Establiments – Palma

## A first impression

Welcome to this charming townhouse in Palma-Establiments, which combines traditional style with modern design. The constructed area of approx. 278 m<sup>2</sup> offers a beautiful garden and pool as well as a terrace on the second floor of approx. 100 m<sup>2</sup> with breathtaking panoramic views. Upon entering the house through the entrance hall, the beautiful patio leads to the open plan kitchen, living and dining area, which leads directly onto the partially covered terrace and garden with pool. On the same floor there is an exceptional bedroom with an en-suite bathroom, a dressing room and a laundry room. On the upper floor there are two spacious bedrooms, each with an en-suite bathroom and a wonderful terrace with far-reaching views. The property also has a double garage, underfloor heating and central air conditioning by heat pump as well as stone and oak wood floors. This home is perfect for those who appreciate the traditional charm of a townhouse while enjoying modern comfort and design. The neighborhood is beautifully nestled in nature. Be enchanted by this unique property and arrange a viewing today!

Property ID: ES233744604 - 07010 Establiments – Palma

## Details of amenities

- Air-to-water heat pump
- Underfloor heating
- Air conditioning
- Pool
- Roof terrace
- Garden

Property ID: ES233744604 - 07010 Establiments – Palma

## All about the location

Establiments is a charming village located about 7 km north of the city center of Palma de Mallorca. It has retained its rural character while offering excellent connections to the capital. With a manageable population of around 2,000 people, it is an ideal place for those who appreciate a quiet and relaxed environment without having to sacrifice proximity to the vibrant city. The area is characterized by rolling hills and Mediterranean vegetation, making it an attractive retreat for nature lovers. One of the special sights in the area is the "Son Espases" aqueduct, a historic structure that was part of Palma's old water supply system and represents the technical engineering of times gone by. The nearby manor house "Son Berga" is also worth a visit, with its typical Mallorcan architecture. For families, Establiments offers a good selection of schools, which can be reached in a short drive. There are both state and international schools in the immediate vicinity, which makes the location particularly attractive for expats. The quiet surroundings and family atmosphere of the village make it a perfect place to raise children. The distance to Palma is around 7 km and the airport is also easily accessible, being around 17 km away. Overall, Establiments offers a perfect balance between village charm, historical significance and proximity to Palma, making it a desirable place to live for people looking for the best of both worlds.

Property ID: ES233744604 - 07010 Establiments – Palma

## Other information

We generally recommend having the building law situation checked by a specialist lawyer. All details are based exclusively on information provided by the owner or client. We assume no liability for the completeness, accuracy and timeliness of the information. The brokerage fee is payable by the vendor. Any taxes, notary and land registry costs incurred on the purchase are to be borne by the buyer.



Property ID: ES233744604 - 07010 Establiments – Palma

## Contact partner

For further information, please contact your contact person:

Florian Waetzoldt

---

Placa Hostals 11 Mallorca – Santa Maria

**E-Mail:** [santamaria@von-poll.com](mailto:santamaria@von-poll.com)

*To Disclaimer of von Poll Immobilien GmbH*

---

[www.von-poll.com](http://www.von-poll.com)