

Pietrasanta – Toscana

# Renovated single-family farmhouse in idyllic Tuscany

Property ID: IT24415996



[www.von-poll.it](http://www.von-poll.it)

PURCHASE PRICE: 990.000 EUR • LIVING SPACE: ca. 180 m<sup>2</sup> • ROOMS: 4 • LAND AREA: 3.000 m<sup>2</sup>

Property ID: IT24415996 - 55045 Pietrasanta – Toscana

- At a glance
- The property
- Energy Data
- Floor plans
- A first impression
- Contact partner

Property ID: IT24415996 - 55045 Pietrasanta – Toscana

## At a glance

Property ID	IT24415996	Purchase Price	990.000 EUR
Living Space	ca. 180 m <sup>2</sup>	Commission	subject to commission
Rooms	4	Total Space	ca. 300 m <sup>2</sup>
Bedrooms	1	Usable Space	ca. 0 m <sup>2</sup>
Bathrooms	1	Equipment	Fireplace, Balcony

Property ID: IT24415996 - 55045 Pietrasanta – Toscana

## Energy Data

Energy Source	Air-to-water heat pump	Energy Certificate	Energy demand certificate
Energy certificate valid until	01.01.2033		
Power Source	Air-to-water heat pump		

Property ID: IT24415996 - 55045 Pietrasanta – Toscana

## The property





Property ID: IT24415996 - 55045 Pietrasanta – Toscana

## The property



Property ID: IT24415996 - 55045 Pietrasanta – Toscana

## The property





Property ID: IT24415996 - 55045 Pietrasanta – Toscana

## The property





Property ID: IT24415996 - 55045 Pietrasanta – Toscana

## The property



Property ID: IT24415996 - 55045 Pietrasanta – Toscana

## The property



Property ID: IT24415996 - 55045 Pietrasanta – Toscana

## The property





Property ID: IT24415996 - 55045 Pietrasanta – Toscana

## The property



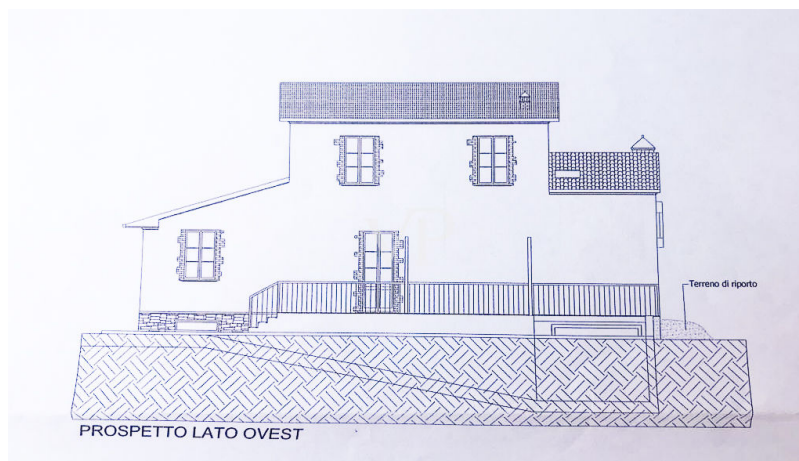
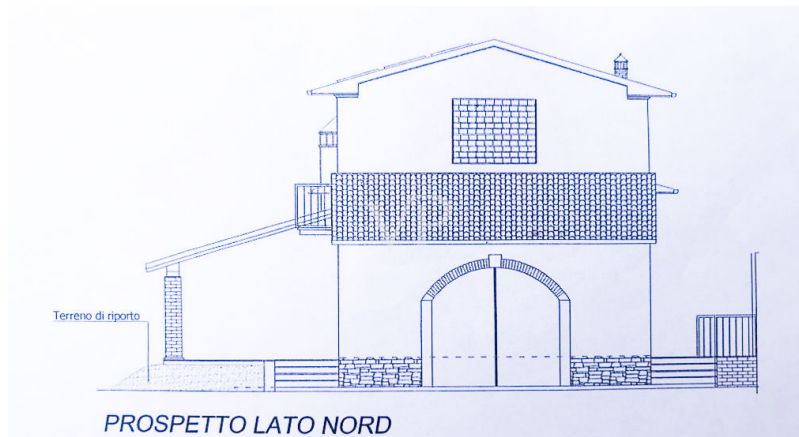
Property ID: IT24415996 - 55045 Pietrasanta – Toscana

## The property

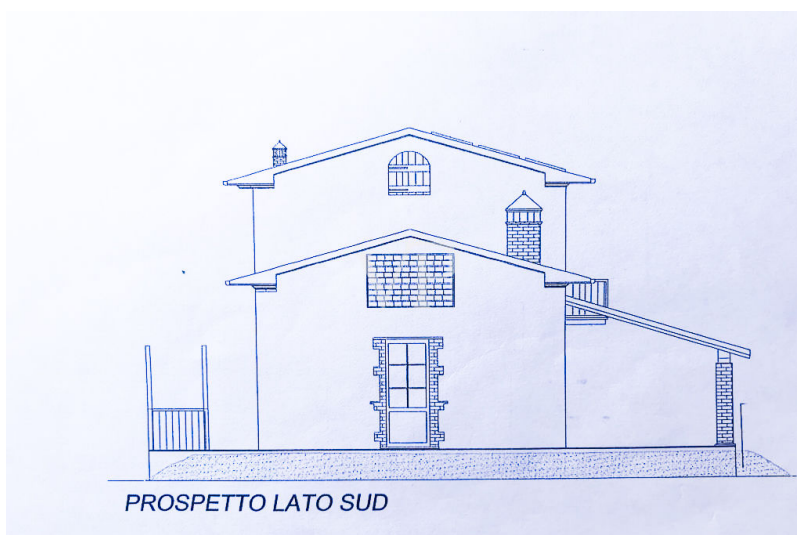
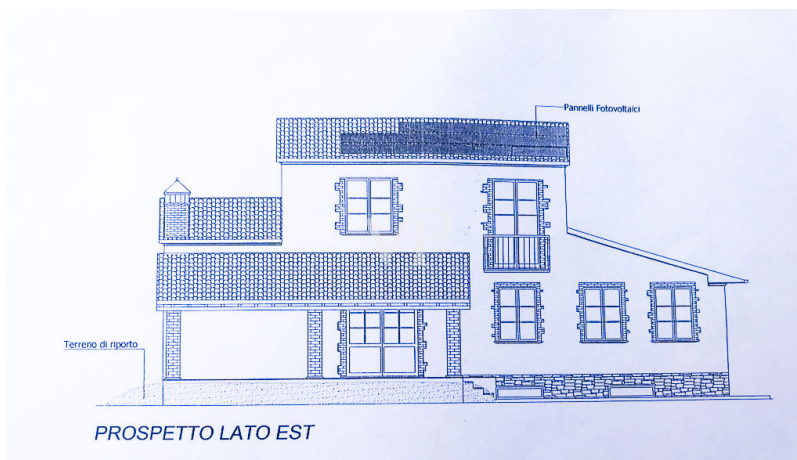


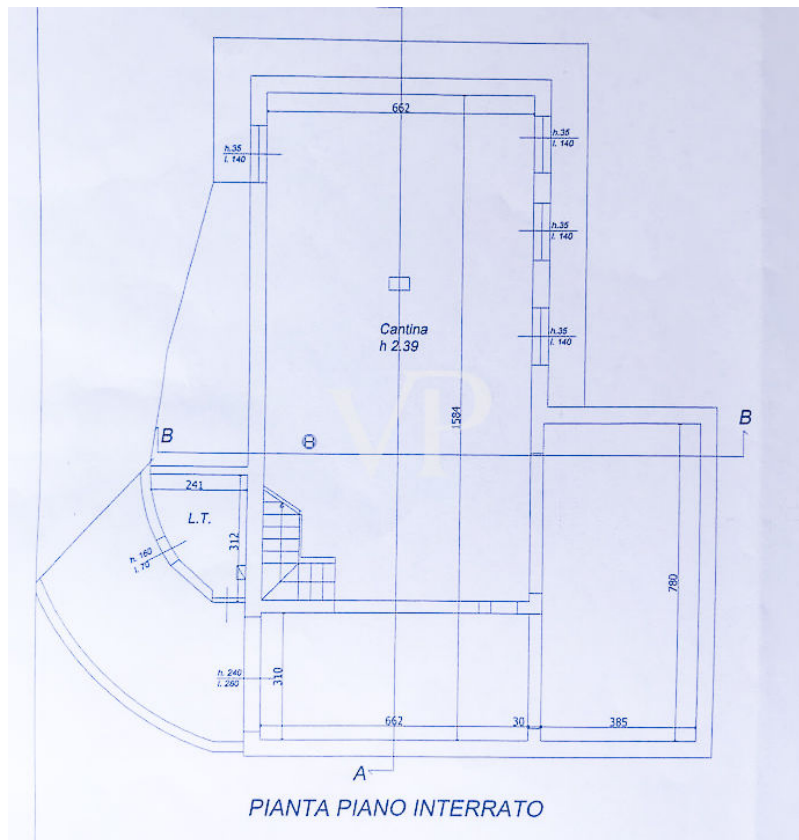
Property ID: IT24415996 - 55045 Pietrasanta – Toscana

## Floor plans













Property ID: IT24415996 - 55045 Pietrasanta – Toscana

## A first impression

New single-family farmhouse free on 4 sides whose works have been recently completed located in the municipality of Pietrasanta. The property has all the latest technical systems such as heat pump heating system, floor heat distribution system, window frames with double glazing. The building is in energy class A4, is arranged on two levels above ground of about 180 square meters, plus the basement part of about 150 square meters where you can make a spacious tavern and a large garage. The house consists on the ground floor of a large open living area, fireplace and open kitchen, bedroom, and bathroom. On the first floor we find two bedrooms and a bathroom. The basement is accessed from both inside and outside and is currently composed of one large space of about 150sqm. Large surrounding garden of about 3000sqm.

Property ID: IT24415996 - 55045 Pietrasanta – Toscana

## Contact partner

For further information, please contact your contact person:

Christian Weissensteiner

---

Corso Italia 1 Mailand  
E-Mail: [milano@von-poll.com](mailto:milano@von-poll.com)

*To Disclaimer of von Poll Immobilien GmbH*

---

[www.von-poll.com](http://www.von-poll.com)