

Colonia de Sant Jordi – Süd

Modern new build first floor apartment with communal pool in Colonia de Sant Jordi

Property ID: ES24379081



PURCHASE PRICE: 670.000 EUR • LIVING SPACE: ca. 98 m² • ROOMS: 3

Property ID: ES24379081 - 07638 Colonia de Sant Jordi – Süd

- At a glance
- The property
- Energy Data
- Floor plans
- A first impression
- Details of amenities
- All about the location
- Contact partner

Property ID: ES24379081 - 07638 Colonia de Sant Jordi – Süd

At a glance

Property ID	ES24379081
Living Space	ca. 98 m ²
Rooms	3
Bedrooms	2
Bathrooms	2
Year of construction	2026
Type of parking	1 x Underground car park

Purchase Price	670.000 EUR
Condition of property	First occupancy
Construction method	Solid
Equipment	Terrace, Swimming pool, Garden / shared use, Built-in kitchen

Property ID: ES24379081 - 07638 Colonia de Sant Jordi – Süd

Energy Data

Type of heating	Underfloor heating
Power Source	Electric
Energy information	At the time of preparing the document, no energy certificate was available.

Property ID: ES24379081 - 07638 Colonia de Sant Jordi – Süd

The property



Property ID: ES24379081 - 07638 Colonia de Sant Jordi – Süd

The property



Property ID: ES24379081 - 07638 Colonia de Sant Jordi – Süd

The property



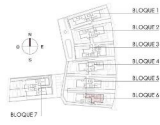
Property ID: ES24379081 - 07638 Colonia de Sant Jordi – Süd

The property

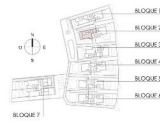


Property ID: ES24379081 - 07638 Colonia de Sant Jordi – Süd

Floor plans

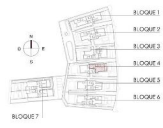


N°	SUPERFICIES ÚTILES / FLOOR AREA / NUTZFLÄCHE	TIPO / TYPE	ESQ.
1	VESTRIBLO / HALL / VESTIBULE	3,36 m ²	
2	PASO / CORRIDOR / DURCHGANG	4,90 m ²	
6	COCINA / KITCHEN / KÜCHE	8,89 m ²	
7	GALERIA / GALLERY / WIRTSCHAFTSRUAUM	4,93 m ²	
8	SALON / CORREDOR / WOHNSALON / WOHNSCHLAFZIMMER	22,22 m ²	
9	DORMITORIO 1 / BEDROOM 1 / SCHLAFZIMMER 1	12,11 m ²	
10	DORMITORIO 2 / BEDROOM 2 / SCHLAFZIMMER 2	12,11 m ²	
13	BANO 1 / BATHROOM 1 / BADEZIMMER 1	4,91 m ²	
13	BANO 2 / BATHROOM 2 / BADEZIMMER 2	4,92 m ²	
TOTAL SUP. ÚTILES / TOTAL FLOOR AREA / GESAMTE NUTZFLÄCHE			
91,28 m²			
SUP. CONSTRUIDA INTERIOR / BUILT INTERIOR AREA / BEBAUTE INNENFLÄCHE			
96,57 m²			
16 SUP. CONSTRUIDA PORCHES / BUILT PORCH / AREA / BEBAUTE TERRAZENFLÄCHE			
18,71 m²			
22 SUP. CONSTRUIDA TERRAZA DE RECUBIERTA / BUILT OPEN TERRACE / AREA / BEBAUTE TERRAZENFLÄCHE 1			
25,89 m²			
29 SUP. CONSTRUIDA TERRAZA DE RECUBIERTA / BUILT OPEN TERRACE / AREA / BEBAUTE TERRAZENFLÄCHE 2			
7,81 m²			
TOTAL SUP. CONSTRUIDA PRIVADA / TOTAL BUILT PRIVATE AREA / GESAMTE BEBAUTE FLÄCHE			
168,28 m²			
SUP. JARDIN / GARDEN AREA / GARTENFLÄCHE			
107 m²			



N°	SUPERFICIES ÚTILES / FLOOR AREA / NUTZFLÄCHE	TIPO / TYPE	ESQ.
1	VESTRIBLO / HALL / VESTIBULE	3,28 m ²	
2	PASO / CORRIDOR / DURCHGANG	4,80 m ²	
6	COCINA / KITCHEN / KÜCHE	8,89 m ²	
7	GALERIA / GALLERY / WIRTSCHAFTSRUAUM	4,93 m ²	
8	SALON / CORREDOR / WOHNSALON / WOHNSCHLAFZIMMER	22,22 m ²	
9	DORMITORIO 1 / BEDROOM 1 / SCHLAFZIMMER 1	12,11 m ²	
10	DORMITORIO 2 / BEDROOM 2 / SCHLAFZIMMER 2	12,11 m ²	
13	BANO 1 / BATHROOM 1 / BADEZIMMER 1	4,91 m ²	
13	BANO 2 / BATHROOM 2 / BADEZIMMER 2	4,92 m ²	
TOTAL SUP. ÚTILES / TOTAL FLOOR AREA / GESAMTE NUTZFLÄCHE			
81,28 m²			
SUP. CONSTRUIDA INTERIOR / BUILT INTERIOR AREA / BEBAUTE INNENFLÄCHE			
86,28 m²			
16 SUP. CONSTRUIDA PORCHES / BUILT PORCH / AREA / BEBAUTE TERRAZENFLÄCHE			
20,28 m²			
22 SUP. CONSTRUIDA TERRAZA DE RECUBIERTA / BUILT OPEN TERRACE / AREA / BEBAUTE TERRAZENFLÄCHE 1			
75,57 m²			
TOTAL SUP. CONSTRUIDA PRIVADA / TOTAL BUILT PRIVATE AREA / GESAMTE BEBAUTE FLÄCHE			
131,85 m²			
SUP. JARDIN / GARDEN AREA / GARTENFLÄCHE			
134 m²			





N°	DIFFERENZIELLE FLOOR AREA / NUTZFLÄCHE	TPO 2011	2018
1	VESTIBOLO / HALL / VESTIBULE	8,38 m ²	
2	PASSO / CORRIDORE / GÜRTCHANG	4,88 m ²	
3	DECCA / HOFEN / HOF	6,98 m ²	
7	GALLERIA / GALLERY / FREIZEITGANGSTRASSE	4,08 m ²	
8	SALON / COMMON / LIVING DINING ROOM / WOHNESSIMMER	22,22 m ²	
9	DORMITORY 1 / BEDROOM 1 / SCHLAFZIMMER 1	16,71 m ²	
10	DORMITORY 2 / BEDROOM 2 / SCHLAFZIMMER 2	12,71 m ²	
12	KITCHEN / BATHROOM 1 / BADEZIMMER 1	4,82 m ²	
13	KITCHEN / BATHROOM 2 / BADEZIMMER 2	4,02 m ²	
	TOTAL SUP. STREILE / TOTAL FLOOR AREA / GESAMTE NUTZFLÄCHE	91,17 m²	
	SUP. COSTRUTTA INTERIOR / BUILT IN INTERIOR AREA / BEBAUTE INNENFLÄCHE	18,17 m²	
14	SUP. COSTRUTTA PORCHES / BUILT PORCH / AREA / BEBAUTE TERRAZZE 1	15,71 m ²	
22	SUP. COSTRUTTA TERRAZZA / TERRAZZA / BUILT OPEN TERRAZZE / AREA - BEBAUTE TERRAZZE 2	49,29 m ²	
	TOTAL SUP. COSTRUTTA PRIVATA / TOTAL BUILT PRIVATE AREA / GESAMTE BEBAUTE FLÄCHE	183,17 m²	
	SUP. JARDIN / GARDEN AREA / GARTENFLÄCHE	102 m ²	

This floor plan is not to scale. The documents were given to us by the client. For this reason, we cannot guarantee the accuracy of the information.

Property ID: ES24379081 - 07638 Colonia de Sant Jordi – Süd

A first impression

Discover these unique new-build apartments in a stylish residential complex with 28 units that impresses with its architecture in elegant shades of white and brown. In the picturesque Colonia de Sant Jordi, just 100 meters from the Mediterranean Sea, the apartments offer a pure Mediterranean lifestyle. The light-flooded units have a generous living space of 98 square meters with two bedrooms and two bathrooms, one of which is en suite. Spend pleasant hours on the private terrace with garden and let yourself be pampered by the mild climate. The complex includes a communal garden with a large pool and a relaxing jacuzzi - perfect for relaxing days under the sun. On request, the apartments can be sold fully furnished for an extra charge. The apartment can be sold fully furnished for an additional cost. The apartments also include a cellar room and an underground parking space. Completion is planned for November 2026.

Property ID: ES24379081 - 07638 Colonia de Sant Jordi – Süd

Details of amenities

- Underfloor heating (electric)
- Air heat pump for hot water
- Air conditioning hot/cold
- Double glazed windows
- Motorized blinds
- Fitted kitchen with island
- Extractor hood
- LED strips under the wall units (kitchen)
- Lighting with recessed LED spotlights in the bathroom
- Shower screen with safety glass
- High-quality built-in shower fitting
- Terrace
- Garden
- Swimming pool 80m²
- Heated whirlpool
- Cellar room
- Parking lot
- Pre-installation for electric vehicle charging station at all parking spaces in the underground garage
- Municipal water supply
- Municipal power supply

Property ID: ES24379081 - 07638 Colonia de Sant Jordi – Süd

All about the location

Colonia de Sant Jordi is a charming coastal village in the southeast of Mallorca. Known for its picturesque beaches and crystal clear waters, this place offers an ideal mix of relaxation and activity. The main street is lined with inviting restaurants, cafés and stores selling local delicacies and handicrafts. The port of Colonia de Sant Jordi is a popular starting point for boat trips to the surrounding islands, including the enchanting Cabrera Islands. The beaches, such as Playa Es Trenc, are famous for their fine, white sand and turquoise waters, which are perfect for swimming and sunbathing. For nature lovers, there are numerous hiking and cycling trails in the area that lead through a beautiful landscape.

Property ID: ES24379081 - 07638 Colonia de Sant Jordi – Süd

Contact partner

For further information, please contact your contact person:

Philip Bornewasser

Ronda Migjorn, 145B Mallorca – Lluçmajor

E-Mail: llucmajor@von-poll.com

To Disclaimer of von Poll Immobilien GmbH

www.von-poll.com