

Luxembourg-centre ville – CBD

## Office for rent

*Property ID: LU881900127*



Property ID: LU881900127 - L-1724 Luxembourg-centre ville – CBD

- At a glance
- The property
- Floor plans
- A first impression
- Contact partner

Property ID: LU881900127 - L-1724 Luxembourg-centre ville – CBD

## At a glance

|                |             |                  |                            |
|----------------|-------------|------------------|----------------------------|
| Property ID    | LU881900127 | Rent price       | On request                 |
| Available from | 10.05.2019  | Additional costs | 600 EUR                    |
| Floor          | 1           | Commission       | Fees charged to the tenant |
|                |             | Total Space      | ca. 120 m <sup>2</sup>     |

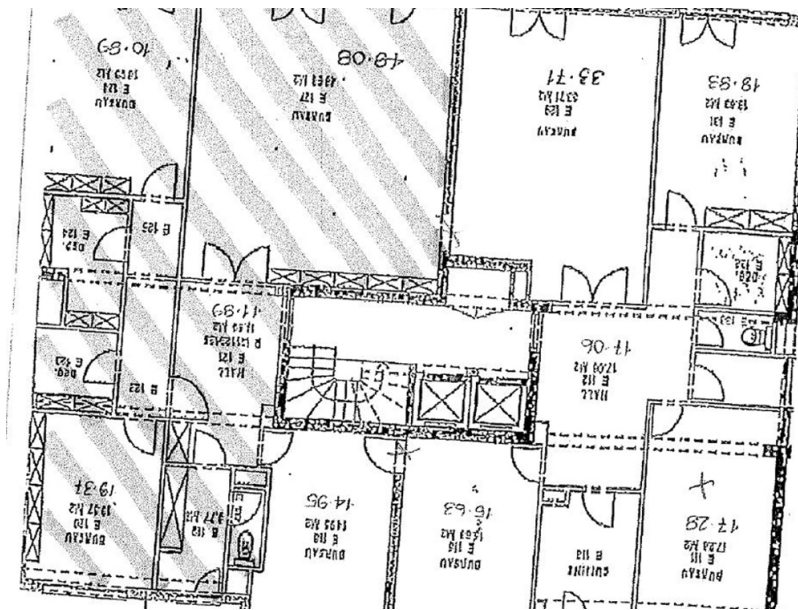
Property ID: LU881900127 - L-1724 Luxembourg-centre ville – CBD

## The property



Property ID: LU881900127 - L-1724 Luxembourg-centre ville – CBD

## Floor plans



This floor plan is not to scale. The documents were given to us by the client. For this reason, we cannot guarantee the accuracy of the information.

Property ID: LU881900127 - L-1724 Luxembourg-centre ville – CBD

## A first impression

Beautiful office space located in front of the 1st floor of a building of the 70s and in front of the park. The surface has been completely renovated. It consists of 4 or 5 offices, a meeting room, kitchenette and sanitary. The property comprises twice two parking spaces in a row, reserve and two cellars. The building is close to all amenities, parking Glacis and bus lines.

Property ID: LU881900127 - L-1724 Luxembourg-centre ville – CBD

## Contact partner

For further information, please contact your contact person:

VON POLL REAL ESTATE Limpertsberg

---

6, avenue Pasteur Limpertsberg  
E-Mail: [limpertsberg@von-poll.com](mailto:limpertsberg@von-poll.com)

*To Disclaimer of von Poll Immobilien GmbH*

---

[www.von-poll.com](http://www.von-poll.com)