

Luxembourg-Limpertsberg – Luxembourg-Limpertsberg

Town house for sale in Limpertsberg

Property ID: LU221953572



PURCHASE PRICE: 2.200.000 EUR • LIVING SPACE: ca. 230 m² • LAND AREA: 178 m²

Property ID: LU221953572 - L-2310 Luxembourg-Limpertsberg – Luxembourg-Limpertsberg

- At a glance
- The property
- Energy Data
- Floor plans
- A first impression
- Other information
- Contact partner

Property ID: LU221953572 - L-2310 Luxembourg-Limpertsberg – Luxembourg-Limpertsberg

At a glance

Property ID	LU221953572	Purchase Price	2.200.000 EUR
Living Space	ca. 230 m ²	Total Space	ca. 327 m ²
Roof Type	Mansard roof	Construction method	Solid
Bedrooms	5	Equipment	Terrace, Guest WC, Garden / shared use, Built-in kitchen
Bathrooms	2		
Type of parking	1 x Garage		

Property ID: LU221953572 - L-2310 Luxembourg-Limpertsberg – Luxembourg-Limpertsberg

Energy Data

Power Source	Gas
Energy information	At the time of preparing the document, no energy certificate was available.

Property ID: LU221953572 - L-2310 Luxembourg-Limpertsberg – Luxembourg-Limpertsberg

The property



Property ID: LU221953572 - L-2310 Luxembourg-Limpertsberg – Luxembourg-Limpertsberg

The property



Property ID: LU221953572 - L-2310 Luxembourg-Limpertsberg – Luxembourg-Limpertsberg

The property



Property ID: LU221953572 - L-2310 Luxembourg-Limpertsberg – Luxembourg-Limpertsberg

The property



Property ID: LU221953572 - L-2310 Luxembourg-Limpertsberg – Luxembourg-Limpertsberg

The property



Property ID: LU221953572 - L-2310 Luxembourg-Limpertsberg – Luxembourg-Limpertsberg

The property



Property ID: LU221953572 - L-2310 Luxembourg-Limpertsberg – Luxembourg-Limpertsberg

Floor plans



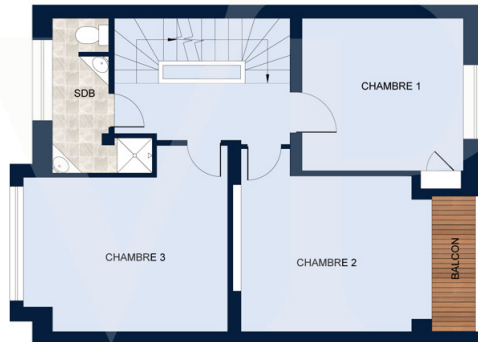
SOUS-SOL

Les plans sont fournis à titre d'information et ne sont pas contractuels

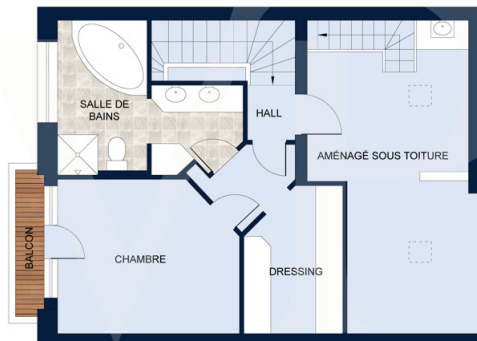


REZ-DE-CHAUSSEE

Les plans sont fournis à titre d'information et ne sont pas contractuels

**PREMIER ÉTAGE**

Les plans sont fournis à titre d'information et ne sont pas contractuels

**DEUXIÈME ÉTAGE**

Les plans sont fournis à titre d'information et ne sont pas contractuels

This floor plan is not to scale. The documents were given to us by the client. For this reason, we cannot guarantee the accuracy of the information.

Property ID: LU221953572 - L-2310 Luxembourg-Limpertsberg – Luxembourg-Limpertsberg

A first impression

Von Poll presents for sale a charming town house. This house consists on the ground floor of an entrance hall with WC, a living room facing the terrace, a very bright equipped kitchen with access to the terrace of the house. On the first floor of this property there are 3 bedrooms and a bathroom. On the 2nd floor we have 2 bedrooms and a bathroom. A garage and cellars complete this property. Close to shops, the city center, transport and schools.

Property ID: LU221953572 - L-2310 Luxembourg-Limpertsberg – Luxembourg-Limpertsberg

Other information

All indications in the present document are based exclusively on the information made available to us by our customers. We do not assume any guarantee as to the completeness, accuracy and timeliness of these indications. The notary fees and registration fees in the land register are borne by the buyer. The sales commission is the responsibility of the seller, who has signed the sales mandate with our agency.

Property ID: LU221953572 - L-2310 Luxembourg-Limpertsberg – Luxembourg-Limpertsberg

Contact partner

For further information, please contact your contact person:

VON POLL REAL ESTATE Limpertsberg

6, avenue Pasteur Limpertsberg
E-Mail: limpertsberg@von-poll.com

To Disclaimer of von Poll Immobilien GmbH

www.von-poll.com