

Luxembourg-Cessange

## Recent 5 bedroom house in a quiet street

Property ID: LU211953458



PURCHASE PRICE: 2.295.000 EUR • LIVING SPACE: ca. 185 m<sup>2</sup> • LAND AREA: 510 m<sup>2</sup>

Property ID: LU211953458 - L-1655 Luxembourg-Cessange

- At a glance
- The property
- Energy Data
- Floor plans
- A first impression
- All about the location
- Other information
- Contact partner

Property ID: LU211953458 - L-1655 Luxembourg-Cessange

## At a glance

Property ID	LU211953458	Purchase Price	2.295.000 EUR
Living Space	ca. 185 m <sup>2</sup>	Total Space	ca. 279 m <sup>2</sup>
Bedrooms	5	Condition of property	Like new
Bathrooms	3	Construction method	Solid
Year of construction	2013	Equipment	Terrace, Guest WC, Garden / shared use, Built-in kitchen
Type of parking	3 x Outdoor parking space, 2 x Garage		

Property ID: LU211953458 - L-1655 Luxembourg-Cessange

## Energy Data

Type of heating	Underfloor heating	Energy efficiency class	A
Power Source	Geo Thermal		
Energy information	At the time of preparing the document, no energy certificate was available.		

Property ID: LU211953458 - L-1655 Luxembourg-Cessange

## The property



Property ID: LU211953458 - L-1655 Luxembourg-Cessange

## The property



Property ID: LU211953458 - L-1655 Luxembourg-Cessange

## The property



Property ID: LU211953458 - L-1655 Luxembourg-Cessange

## The property





Property ID: LU211953458 - L-1655 Luxembourg-Cessange

## The property



Property ID: LU211953458 - L-1655 Luxembourg-Cessange

## The property



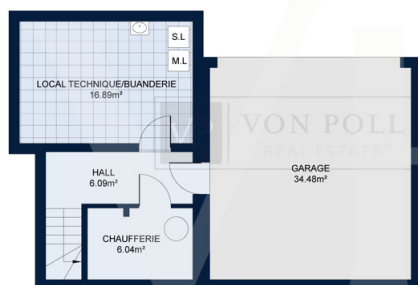
Property ID: LU211953458 - L-1655 Luxembourg-Cessange

## The property



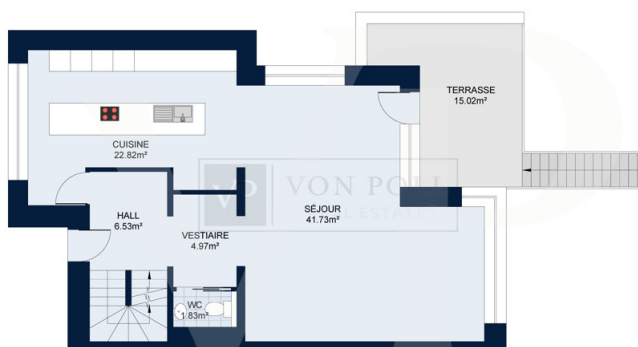
Property ID: LU211953458 - L-1655 Luxembourg-Cessange

## Floor plans



SOUS-SOL

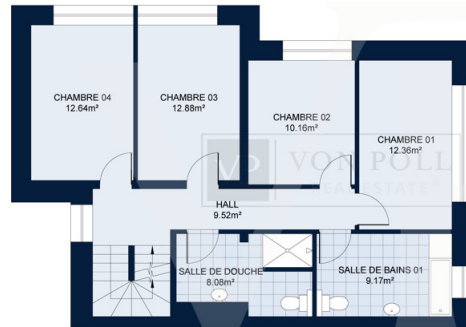
Les plans sont fournis à titre d'information et ne sont pas contractuels



REZ-DE-CHAUSSÉE

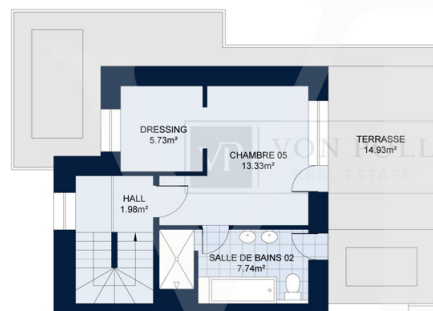
Les plans sont fournis à titre d'information et ne sont pas contractuels





PREMIER ÉTAGE

Les plans sont fournis à titre d'information et ne sont pas contractuels



DEUXIÈME ÉTAGE

Les plans sont fournis à titre d'information et ne sont pas contractuels

This floor plan is not to scale. The documents were given to us by the client. For this reason, we cannot guarantee the accuracy of the information.

Property ID: LU211953458 - L-1655 Luxembourg-Cessange

## A first impression

Von Poll Real Estate Luxembourg offers for sale this recent house of high standing free on 3 sides on a plot of 5.10are in a residential street (30km / h) of Cessange. The ground floor opens onto an entrance hall with cloakroom and guest toilet then leading to the very bright living / dining room from its large windows, as well as the fully equipped kitchen with quality materials. Access to the south-facing terrace is through the living room. On the first floor, 4 bedrooms share a large bathroom and a second shower room. On the second floor is a master bedroom with its own bathroom and dressing room which also benefits from a south-facing roof terrace. The basement has a large double garage, a large laundry room and a technical room. Built in 2013, with a total area around 280m<sup>2</sup> and ±185m<sup>2</sup> living space, the house has geothermal heating, triple glazed windows with electric shutters, the floors are parquet and tiled. The high-quality materials, its unobstructed view, its brightness, its tranquility, its location are assets among others that make this house an exceptional property.

Property ID: LU211953458 - L-1655 Luxembourg-Cessange

## All about the location

Cessange is near the Cloche d'Or shopping center and the kockelscheuer site which offers many amenities. This property is located close to the main axes to be able to reach the city center quickly or the Vauban school which is nearby thanks to public transport.

Property ID: LU211953458 - L-1655 Luxembourg-Cessange

## Other information

All indications in the present document are based exclusively on the information made available to us by our customers. We do not assume any guarantee as to the completeness, accuracy and timeliness of these indications. The notary fees and registration fees in the land register are borne by the buyer. The sales commission is the responsibility of the seller, who has signed the sales mandate with our agency.



Property ID: LU211953458 - L-1655 Luxembourg-Cessange

## Contact partner

For further information, please contact your contact person:

VON POLL REAL ESTATE Limpertsberg

---

6, avenue Pasteur Limpertsberg  
E-Mail: [limpertsberg@von-poll.com](mailto:limpertsberg@von-poll.com)

*To Disclaimer of von Poll Immobilien GmbH*

---

[www.von-poll.com](http://www.von-poll.com)