

Santa María del Camí – Mitte

# Townhouse with huge garden and views, located very close to the centre of Santa Maria.

Objektnummer: ES233744269



KAUFPREIS: 490.000 EUR • WOHNFLÄCHE: ca. 234 m<sup>2</sup> • ZIMMER: 6 • GRUNDSTÜCK: 334 m<sup>2</sup>

Objektnummer: ES233744269 - 07320 Santa María del Camí – Mitte

- Auf einen Blick
- Die Immobilie
- Ein erster Eindruck
- Ausstattung und Details
- Alles zum Standort
- Sonstige Angaben
- Ansprechpartner

Objektnummer: ES233744269 - 07320 Santa María del Camí – Mitte

## Auf einen Blick

Objektnummer	ES233744269	Kaufpreis	490.000 EUR
Wohnfläche	ca. 234 m <sup>2</sup>	Haustyp	Reihenhaus
Bezugsfrei ab	nach Vereinbarung	Zustand der Immobilie	renovierungsbedürftig
Zimmer	6	Nutzfläche	ca. 0 m <sup>2</sup>
Schlafzimmer	5	Ausstattung	Terrasse, Kamin
Badezimmer	1		
Baujahr	1950		

Objektnummer: ES233744269 - 07320 Santa María del Camí – Mitte

## Die Immobilie



Objektnummer: ES233744269 - 07320 Santa María del Camí – Mitte

## Die Immobilie



Objektnummer: ES233744269 - 07320 Santa María del Camí – Mitte

## Die Immobilie



Objektnummer: ES233744269 - 07320 Santa María del Camí – Mitte

## Die Immobilie



Objektnummer: ES233744269 - 07320 Santa María del Camí – Mitte

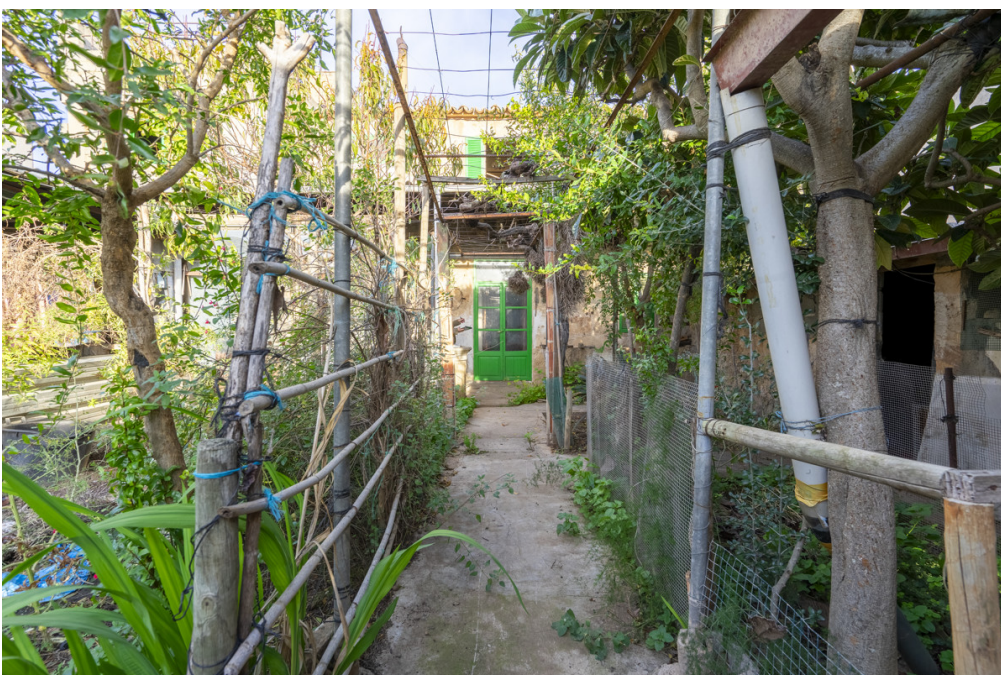
## Die Immobilie





Objektnummer: ES233744269 - 07320 Santa María del Camí – Mitte

## Die Immobilie



Objektnummer: ES233744269 - 07320 Santa María del Camí – Mitte

## Die Immobilie



Objektnummer: ES233744269 - 07320 Santa María del Camí – Mitte

## Die Immobilie



Objektnummer: ES233744269 - 07320 Santa María del Camí – Mitte

## Ein erster Eindruck

Townhouse located very close to the centre, in a quiet corner of Santa Maria. It has a large back garden and a garage for several cars, as well as unobstructed views of the surrounding area. The property is distributed over two floors and has a total of six bedrooms, the kitchen and several utility rooms. The house is in need of updating and offers a lot of possibilities. Additional features include mains electricity, town water, well, cistern, two fireplaces and a wood burning oven.

Objektnummer: ES233744269 - 07320 Santa María del Camí – Mitte

## Ausstattung und Details

- garden
- Own well and cistern
- garage

Objektnummer: ES233744269 - 07320 Santa María del Camí – Mitte

## Alles zum Standort

Santa María del Camí, a picturesque village in the heart of Mallorca, has almost 7,000 inhabitants and has become a highly sought-after place by locals and foreigners alike, combining traditional charm with modern comforts. The imposing parish church, with its striking bell tower, is an architectural jewel that reflects the history of the village. Another attraction is the wine, which is grown in Santa María and attracts many visitors, and on Sundays there is a weekly market offering a wealth of fresh produce, handmade goods and local specialties. The picturesque landscape, characterized by rolling hills and vineyards, is ideal for relaxing walks and bike rides and the nearby Tramuntana mountains can be explored. The central location of Santa Maria del Camí, only about 20 km from Palma, makes it an attractive place to live for those who appreciate the tranquillity of village life but still want the amenities of the city within easy reach. The airport and beaches are also within similar reach. Meanwhile, there are a variety of high-quality restaurants and shopping opportunities here. In addition to the renowned international school "The Montessori School", there is also a public school. The leisure center "Mallorca Fashion Outlet", which is only a few minutes away by car, offers numerous fashion stores, bars, restaurants, activities for the whole family and a large cinema.

Objektnummer: ES233744269 - 07320 Santa María del Camí – Mitte

## Sonstige Angaben

We generally recommend having the building law situation checked by a specialist lawyer. All details are based exclusively on the information provided by the owner or client. We assume no liability for the completeness, accuracy and timeliness of the information. The brokerage fee is payable by the vendor. Any taxes, notary and land registry costs incurred on the purchase are to be borne by the buyer.

Objektnummer: ES233744269 - 07320 Santa María del Camí – Mitte

## Ansprechpartner

Weitere Informationen erhalten Sie über Ihren Ansprechpartner:

Florian Waetzoldt

---

Placa Hostals 11 Mallorca – Santa Maria

E-Mail: [santamaria@von-poll.com](mailto:santamaria@von-poll.com)

*To Disclaimer of von Poll Immobilien GmbH*

---

[www.von-poll.com](http://www.von-poll.com)