

Son Serra de Marina – Nord

# Magnificent historic mansion in the hills of Santa Margalida, near Son Serra de Marina

Objektnummer: ES223766



KAUFPREIS: 14.700.000 EUR • WOHNFLÄCHE: ca. 1.565 m<sup>2</sup> • ZIMMER: 8 • GRUNDSTÜCK: 3.236.484 m<sup>2</sup>

Objektnummer: ES223766 - 07459 Son Serra de Marina – Nord

- Auf einen Blick
- Die Immobilie
- Ein erster Eindruck
- Ansprechpartner

Objektnummer: ES223766 - 07459 Son Serra de Marina – Nord

## Auf einen Blick

Objektnummer	ES223766
Wohnfläche	ca. 1.565 m <sup>2</sup>
Bezugsfrei ab	nach Vereinbarung
Zimmer	8
Schlafzimmer	6
Badezimmer	3
Baujahr	1870
Stellplatz	2 x Garage

Kaufpreis	14.700.000 EUR
Haustyp	Finca
Zustand der Immobilie	renovierungsbedürftig
Nutzfläche	ca. 2.900 m <sup>2</sup>
Ausstattung	Terrasse, Kamin



Objektnummer: ES223766 - 07459 Son Serra de Marina – Nord

## Die Immobilie





Objektnummer: ES223766 - 07459 Son Serra de Marina – Nord

## Die Immobilie



Objektnummer: ES223766 - 07459 Son Serra de Marina – Nord

## Die Immobilie





Objektnummer: ES223766 - 07459 Son Serra de Marina – Nord

## Die Immobilie





Objektnummer: ES223766 - 07459 Son Serra de Marina – Nord

## Die Immobilie





Objektnummer: ES223766 - 07459 Son Serra de Marina – Nord

## Die Immobilie





Objektnummer: ES223766 - 07459 Son Serra de Marina – Nord

## Die Immobilie





Objektnummer: ES223766 - 07459 Son Serra de Marina – Nord

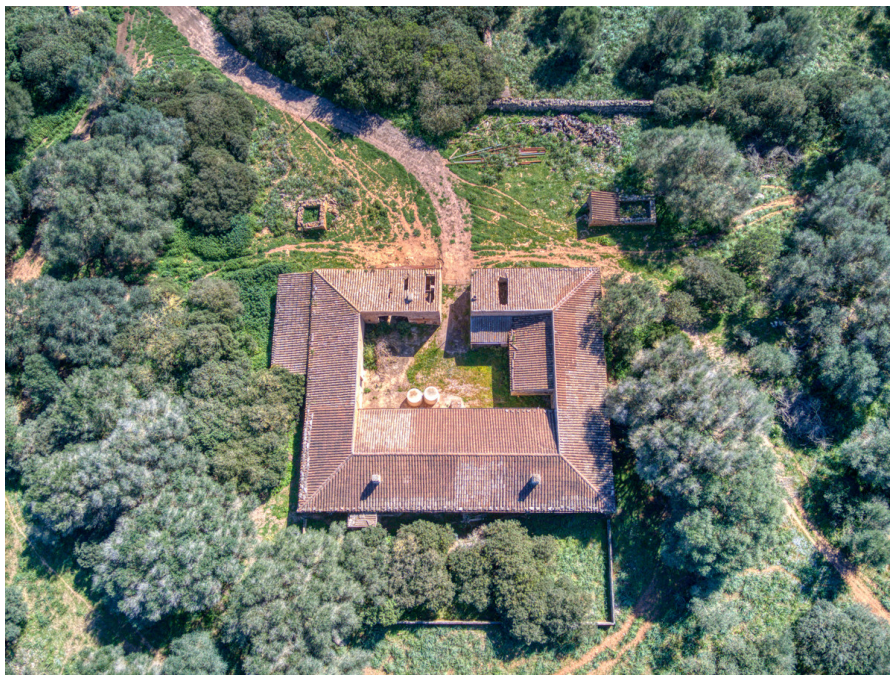
## Die Immobilie





Objektnummer: ES223766 - 07459 Son Serra de Marina – Nord

## Die Immobilie





Objektnummer: ES223766 - 07459 Son Serra de Marina – Nord

## Die Immobilie





Objektnummer: ES223766 - 07459 Son Serra de Marina – Nord

## Die Immobilie





Objektnummer: ES223766 - 07459 Son Serra de Marina – Nord

## Die Immobilie





Objektnummer: ES223766 - 07459 Son Serra de Marina – Nord

## Die Immobilie





Objektnummer: ES223766 - 07459 Son Serra de Marina – Nord

## Die Immobilie



Objektnummer: ES223766 - 07459 Son Serra de Marina – Nord

## Ein erster Eindruck

Majestic and historic property in Son Serra de Marina in the Bay of Alcudia overlooking the Bay of Alcudia from Cap Menorca to Cap Farrutx. From the main house the land stretches through fertile meadows and fields and extensive pine forests almost to the sea. Colonia Sant Pere and Arta are only a few kilometers away. The property is perfect for an equestrian finca, a polo finca or a winery with rural hotel. Or any combination of these, the possibilities are almost unlimited. The flat and perfectly usable land covers in total the immense area of about 323 ha and is divided into several plots. The property includes the historic main house as well as the residential house next to it. In addition, there are several farm buildings, stables, storerooms, as well as a separate chapel and another large square farm about 500 m from the main house, which is accessed by a separate road. The total constructed area is about 2,900 m<sup>2</sup>. The property has its own hunting ground and a small hunting lodge several kilometers from the main house. The property is currently used for cattle breeding and agriculture, but offers enormous potential for vineyards, plantations and much more. The property also has several natural fresh water wells. Directly in front of the main house is a beautiful private chapel. This is a unique opportunity to acquire such a large property in a unique location very close to the sea and be able to call a part of Mallorca's history your own.



Objektnummer: ES223766 - 07459 Son Serra de Marina – Nord

## Ansprechpartner

Weitere Informationen erhalten Sie über Ihren Ansprechpartner:

Christian W. Czarnetzki

---

C./Cecilio Metelo 67 Mallorca – Pollensa  
E-Mail: [pollensa@von-poll.com](mailto:pollensa@von-poll.com)

*To Disclaimer of von Poll Immobilien GmbH*

---

[www.von-poll.com](http://www.von-poll.com)