

Palma

# Luxury penthouse apartments with exceptional offer in Nou Levant

Objektnummer: ES21379103\_6.H



KAUFPREIS: 3.360.000 EUR • WOHNFLÄCHE: ca. 133 m<sup>2</sup> • ZIMMER: 4

Objektnummer: ES21379103\_6.H - 07007 Palma

- Auf einen Blick
- Die Immobilie
- Auf einen Blick: Energiedaten
- Grundrisse
- Ein erster Eindruck
- Ausstattung und Details
- Ansprechpartner

Objektnummer: ES21379103\_6.H - 07007 Palma

## Auf einen Blick

Objektnummer	ES21379103_6.H	Kaufpreis	3.360.000 EUR
Wohnfläche	ca. 133 m <sup>2</sup>	Wohnung	Penthouse
Bezugsfrei ab	nach Vereinbarung	Bauweise	Massiv
Etage	6	Nutzfläche	ca. 385 m <sup>2</sup>
Zimmer	4	Ausstattung	Terrasse, Gäste-WC, Schwimmbad, Garten/ mitbenutzung, Einbauküche
Schlafzimmer	3		
Badezimmer	3		
Baujahr	2022		
Stellplatz	1 x Tiefgarage		

Objektnummer: ES21379103\_6.H - 07007 Palma

## Auf einen Blick: Energiedaten

Heizungsart	Fussbodenheizung
Befuerung	Luft/Wasser- Wärmepumpe

Objektnummer: ES21379103\_6.H - 07007 Palma

## Die Immobilie



Objektnummer: ES21379103\_6.H - 07007 Palma

## Die Immobilie



Objektnummer: ES21379103\_6.H - 07007 Palma

## Die Immobilie



Objektnummer: ES21379103\_6.H - 07007 Palma

## Die Immobilie





Objektnummer: ES21379103\_6.H - 07007 Palma

## Die Immobilie



Objektnummer: ES21379103\_6.H - 07007 Palma

## Die Immobilie



Objektnummer: ES21379103\_6.H - 07007 Palma

## Die Immobilie



Objektnummer: ES21379103\_6.H - 07007 Palma

## Die Immobilie



Objektnummer: ES21379103\_6.H - 07007 Palma

## Die Immobilie



Objektnummer: ES21379103\_6.H - 07007 Palma

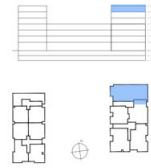
# Grundrisse



- WITZEN
- WARDROBES
- SMART CONTROL
- PANORAMA WINDOWS
- SOLAR CONTROL GLASS
- COMFORT POOL
- COMFORTY LIFT
- SECURITY SYSTEM
- ART WALL
- BLINDS
- ACHEATING
- REFORCED WINDOW

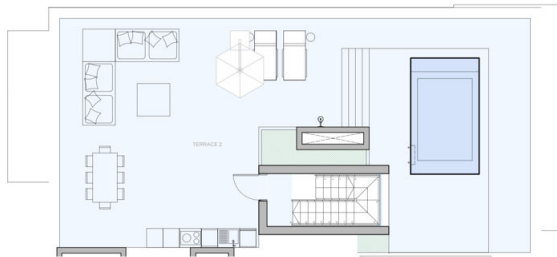
**XO1** **WAVE**  
0m 1m 2m 3m 4m  
This document is information. It has not been checked and we do not guarantee its accuracy.

**XOJAY**



APARTMENT 6.H	
FLOOR USABLE FLOOR AREA	153.79
FLOOR GROSS FLOOR AREA	156.08
TERRACE 1	16.00
TERRACE 2	15.47
POOL	10.83
GROSS FLOOR AREA	201.76
GFA + COMMON AREAS	201.76
ROOM SURFACE	
ENTRY	10.57
LIVING DINING KITCHEN	44.26
STAIRCASE	4.40
HALLWAY 1	5.28
LAUNDRY	4.15
BEDROOM 1	19.21
BEDROOM 1	9.94
BEDROOM 2	12.51
BEDROOM 2	5.89
BEDROOM 3	15.67
BATHROOM 3	5.61
POOL	
LANDING	2.10
TOTAL USABLE FLOOR AREA	153.79

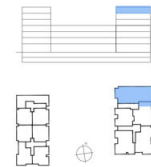
APARTMENT **6.H**



- WITZEN
- WARDROBES
- SMART CONTROL
- PANORAMA WINDOWS
- SOLAR CONTROL GLASS
- COMFORT POOL
- COMFORTY LIFT
- SECURITY SYSTEM
- ART WALL
- BLINDS
- ACHEATING
- REFORCED WINDOW

**XO1** **WAVE**  
0m 1m 2m 3m 4m  
This document is information. It has not been checked and we do not guarantee its accuracy.

**XOJAY**



APARTMENT 6.H	
FLOOR USABLE FLOOR AREA	153.79
FLOOR GROSS FLOOR AREA	156.08
TERRACE 1	16.00
TERRACE 2	15.47
POOL	10.83
GROSS FLOOR AREA	201.76
GFA + COMMON AREAS	201.76
ROOM SURFACE	
ENTRY	10.57
LIVING DINING KITCHEN	44.26
STAIRCASE	4.40
HALLWAY 1	5.28
LAUNDRY	4.15
BEDROOM 1	19.21
BATHROOM 1	9.94
BEDROOM 2	12.51
BATHROOM 2	5.89
BEDROOM 3	15.67
BATHROOM 3	5.61
POOL	
LANDING	2.10
TOTAL USABLE FLOOR AREA	153.79

APARTMENT **6.H.R**

Dieser Grundriss ist nicht massstabsgetreu. Die Unterlagen wurden uns vom Auftraggeber zur Verfügung gestellt. Aus diesem Grund können wir nicht für die Richtigkeit der Angaben garantieren.

Objektnummer: ES21379103\_6.H - 07007 Palma

## Ein erster Eindruck

If you are looking for something special and luxurious in the immediate vicinity of the sea in a fantastic Mediterranean city, you will find it. Luxury apartments with an exceptional offer are for sale. The complex with a total of 84 apartments is located in the up-and-coming location Nou Levant. The layout and layout of the apartments maximise natural light through floor-to-ceiling glass walls that open onto elegant private balconies, providing residents with an outdoor living area to enjoy Palma's mild climate. The striking indoor-outdoor concept creates open plan living spaces with panoramic electric windows and integrated outdoor living areas, along with beautiful roof terraces and gardens. There are three lines to choose from, creating unique properties with an individual feel, using the highest quality materials. The modern, individually designed and fully equipped kitchens with high quality Miele brand electrical appliances are not only for dining, but also for family life and entertaining. Bathrooms feature built-in or freestanding baths and advanced appliances and fixtures. They meet the highest standards and offer a blend of practicality and impeccable style. The penthouses have a spectacular private roof terrace with pool or Jacuzzi and barbecue area with ground planting, designed for privacy and overlooking charming Portixol. The communal outdoor deck offers a place to lounge or swim in an exceptional pool. There are also elegant sun loungers available. A place to relax and unwind is available. With the finest private amenities available exclusively to residents, surrounding an inviting multi-level garden lounge with palm trees, vegetation, overhead lights and fire pits. A true urban oasis. Equipped with sauna and steam room, showers and changing rooms. The fitness area is equipped with state-of-the-art fitness equipment. The XO Lounge offers spaces to live, work and enjoy. The common areas have been carefully designed with comfort and convenience in mind to meet the leisure and business needs of residents in a relaxed atmosphere, complemented by excellent facilities and services. A virtual tour is available for this property.

Objektnummer: ES21379103\_6.H - 07007 Palma

## Ausstattung und Details

- Ceramic tiles GUBI cloud 120x120cm
- Underfloor heating
- Shadow joints (skirting boards)
- Suspended ceiling
- Interior doors: 1-leaf frameless passage door - Inverse Portaro
- intercom system
- Electrical installation
- Electric blinds
- Power sockets/ USB connections
- Intercom system
- Swimming Pool
- Double glazed windows
- Fitted kitchen
- Terrace with
- Municipal water supply
- Municipal electricity supply



Objektnummer: ES21379103\_6.H - 07007 Palma

## Ansprechpartner

Weitere Informationen erhalten Sie über Ihren Ansprechpartner:

Philip Bornewasser

---

Ronda Migjorn, 145B Mallorca – Lluçmajor  
E-Mail: [llucmajor@von-poll.com](mailto:llucmajor@von-poll.com)

*To Disclaimer of von Poll Immobilien GmbH*

---

[www.von-poll.com](http://www.von-poll.com)