

Palma – Palma

# Beautiful new build penthouse with roof terrace in Palma near Parc de Sa Riera

Objektnummer: ES24379020



KAUFPREIS: 335.000 EUR • WOHNFLÄCHE: ca. 71 m<sup>2</sup> • ZIMMER: 3

Objektnummer: ES24379020 - 07011 Palma – Palma

- Auf einen Blick
- Die Immobilie
- Auf einen Blick: Energiedaten
- Grundrisse
- Ein erster Eindruck
- Ausstattung und Details
- Alles zum Standort
- Weitere Informationen
- Ansprechpartner

Objektnummer: ES24379020 - 07011 Palma – Palma

## Auf einen Blick

Objektnummer	ES24379020	Kaufpreis	335.000 EUR
Wohnfläche	ca. 71 m <sup>2</sup>	Wohnung	Penthouse
Bezugsfrei ab	nach Vereinbarung	Bauweise	Massiv
Etage	4	Nutzfläche	ca. 0 m <sup>2</sup>
Zimmer	3	Ausstattung	Terrasse, Einbauküche
Schlafzimmer	2		
Badezimmer	2		
Baujahr	2025		

Objektnummer: ES24379020 - 07011 Palma – Palma

# Auf einen Blick: Energiedaten

Befuerung

Elektro

Objektnummer: ES24379020 - 07011 Palma – Palma

## Die Immobilie



Objektnummer: ES24379020 - 07011 Palma – Palma

## Die Immobilie





Objektnummer: ES24379020 - 07011 Palma – Palma

## Die Immobilie



Objektnummer: ES24379020 - 07011 Palma – Palma

## Die Immobilie



### CERTIFICADO ENERGÉTICO

Consumo de energía  
kWh / m<sup>2</sup> año

Emisiones  
kg CO<sub>2</sub> / m<sup>2</sup> año

A más eficiente

B

C

D

F

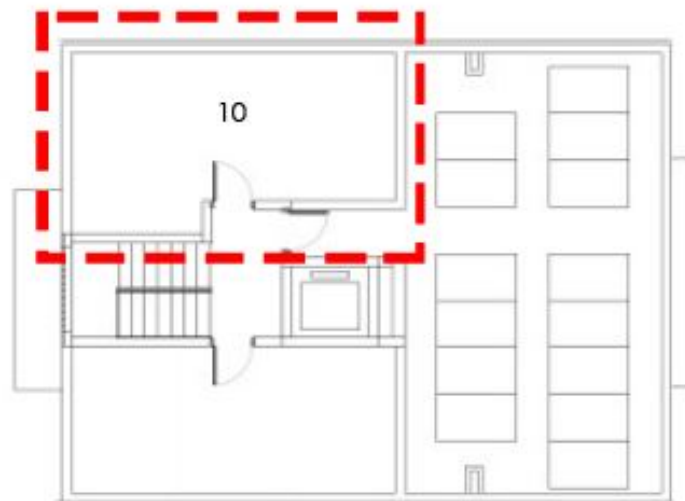
G menos eficiente

EN TRÁMITE



Objektnummer: ES24379020 - 07011 Palma – Palma

## Grundrisse



**SUPERFICIES ÚTILES**

**m<sup>2</sup>**

10. TERRAZA EN CUBIERTA

21.54

Dieser Grundriss ist nicht maßstabgetreu. Die Unterlagen wurden uns vom Auftraggeber zur Verfügung gestellt. Aus diesem Grund können wir nicht für die Richtigkeit der Angaben garantieren.

Objektnummer: ES24379020 - 07011 Palma – Palma

## Ein erster Eindruck

This newly built penthouse with roof terrace is for sale in Palma, just a few minutes from the large Parc de Sa Riera. The apartment offers a living space of approx. 71 square meters. The kitchen with dining area is a large room that incorporates the living room. There are also two bedrooms and two bathrooms, one of which is en suite. The property impresses with its high-quality solid construction and has a full basement. The flooring consists of stylish tiles that lend a timeless charm. A modern fitted kitchen is already available and allows for a comfortable cooking experience. The kitchen is equipped with an induction hob, an oven and a microwave. A special highlight of this apartment are the two balconies and the 21 square meter roof terrace, which invites you to relax and enjoy the Mediterranean sun. The apartment building will be completed in the first quarter of 2025.

Objektnummer: ES24379020 - 07011 Palma – Palma

## Ausstattung und Details

- Double-glazed windows
- Roller shutters
- Fitted kitchen with induction hob, oven and microwave
- Exterior walls with thermal insulation
- Entrance door with security lock
- Kitchen sink with stainless steel and mixer tap
- Bathroom sink with mixer tap
- Hot water with aerothermal system
- Pre-installation of ducted air conditioning
- Installation of photovoltaic system
- Video intercom
- Terrace
- Balcony
- Private roof terrace
- Municipal water supply
- Municipal power supply

Objektnummer: ES24379020 - 07011 Palma – Palma

## Alles zum Standort

Palma, the capital of the island, is also the largest city in Mallorca. It offers a large number of sights and is worth a visit at any time of year. To the east is the port of Portixol, which is not far from the Nou Llevant development area. This is also where the city beach "Platja de Can Pere Antoni" begins, a long sandy beach with a view of the cathedral. This imposing Gothic building with its large rose window and wrought-iron canopy by Gaudí is the city's landmark and tourist magnet. From here, you can walk into the winding old town with its numerous cafés and restaurants. The harbor promenade "Paseo Marítimo", on the other hand, invites you to take a stroll. It is lined with restaurants, boutiques and hotels. To the west of the city is the chic, renovated harbor district of Porto Pi. Here you will find an abundance of waterfront bars and fish restaurants along the promenade, the Palma Casino and the well-known Centro Porto Pi shopping center.



Objektnummer: ES24379020 - 07011 Palma – Palma

## Weitere Informationen

We generally recommend having the building law situation checked by a specialist lawyer. All details are based exclusively on information provided by the owner or client. We assume no liability for the completeness, accuracy and timeliness of the information. The brokerage fee is payable by the vendor. Any taxes, notary and land registry costs incurred on the purchase are to be borne by the buyer.

Objektnummer: ES24379020 - 07011 Palma – Palma

## Ansprechpartner

Weitere Informationen erhalten Sie über Ihren Ansprechpartner:

Philip Bornewasser

---

Ronda Migjorn, 145B Mallorca – Lluçmajor

E-Mail: [llucmajor@von-poll.com](mailto:llucmajor@von-poll.com)

*To Disclaimer of von Poll Immobilien GmbH*

---

[www.von-poll.com](http://www.von-poll.com)